



SZABO SCANDIC

Part of Europa Biosite

Produktinformation



Forschungsprodukte & Biochemikalien



Zellkultur & Verbrauchsmaterial



Diagnostik & molekulare Diagnostik



Laborgeräte & Service

Weitere Information auf den folgenden Seiten!
See the following pages for more information!



Lieferung & Zahlungsart

siehe unsere [Liefer- und Versandbedingungen](#)

Zuschläge

- Mindermengenzuschlag
- Trockeneiszuschlag
- Gefahrgutzuschlag
- Expressversand

SZABO-SCANDIC HandelsgmbH

Quellenstraße 110, A-1100 Wien

T. +43(0)1 489 3961-0

F. +43(0)1 489 3961-7

mail@szabo-scandic.com

www.szabo-scandic.com

[linkedin.com/company/szaboscandic](https://www.linkedin.com/company/szaboscandic) 

Dicer antibody [HL1232]

Cat. No. GTX636580

Host	Rabbit
Clonality	Monoclonal
Isotype	IgG
Application	WB, ICC/IF, IHC-P
Reactivity	Human, Mouse, Rat, Cat, Dog

Package
100 µl, 25 µl

APPLICATION

Application Note

*Optimal dilutions/concentrations should be determined by the researcher.

Suggested dilution	Recommended dilution
WB	1:500-1:3000
ICC/IF	Assay dependent
IHC-P	Assay dependent

Not tested in other applications.

Calculated MW 219 kDa. ([Note](#))

PROPERTIES

Form	Liquid
Buffer	PBS
Preservative	No Preservative
Storage	Store as concentrated solution. Centrifuge briefly prior to opening vial. For short-term storage (1-2 weeks), store at 4°C. For long-term storage, aliquot and store at -20°C or below. Avoid multiple freeze-thaw cycles.
Concentration	1 mg/ml (Please refer to the vial label for the specific concentration.)
Immunogen	Recombinant protein encompassing a sequence within the center region of human Dicer. The exact sequence is proprietary.
Purification	Affinity purified by Protein A.
Conjugation	Unconjugated

Note

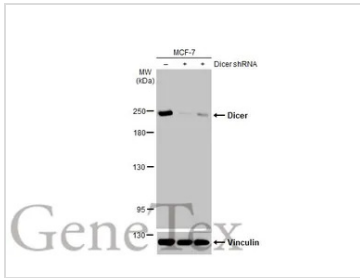
For laboratory research use only. Not for any clinical, therapeutic, or diagnostic use in humans or animals. Not for animal or human consumption.

Purchasers shall not, and agree not to enable third parties to, analyze, copy, reverse engineer or otherwise attempt to determine the structure or sequence of the product.

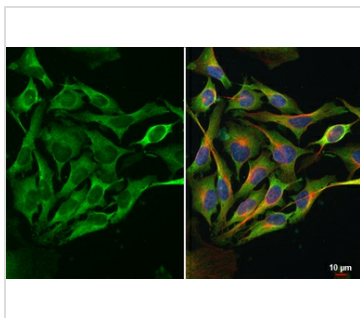


For full product information, images and publications, please visit our [website](#).

DATA IMAGES

**GTX636580 WB Image**

Non-transfected (-) and transfected (+) MCF-7 whole cell extracts (30 μ g) were separated by 5% SDS-PAGE, and the membrane was blotted with Dicer antibody [HL1232] (GTX636580) diluted at 1:1000. The HRP-conjugated anti-rabbit IgG antibody (GTX213110-01) was used to detect the primary antibody.

**GTX636580 ICC/IF Image**

Dicer antibody [HL1232] detects Dicer protein at cytoplasm by immunofluorescent analysis.

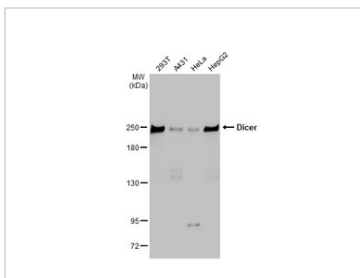
Sample: HeLa cells were fixed in 4% paraformaldehyde at RT for 15 min.

Green: Dicer stained by Dicer antibody [HL1232] (GTX636580) diluted at 1:500.

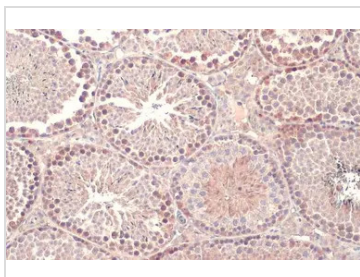
Red: alpha Tubulin, a cytoskeleton marker, stained by alpha Tubulin antibody [GT114] (GTX628802) diluted at 1:1000.

Blue: Fluoroshield with DAPI (GTX30920).

Scale bar= 10 μ m.

**GTX636580 WB Image**

Various whole cell extracts (30 μ g) were separated by 5% SDS-PAGE, and the membrane was blotted with Dicer antibody [HL1232] (GTX636580) diluted at 1:1000. The HRP-conjugated anti-rabbit IgG antibody (GTX213110-01) was used to detect the primary antibody.

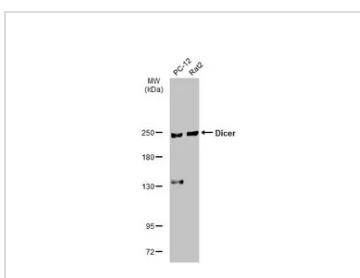
**GTX636580 IHC-P Image**

Dicer antibody [HL1232] detects Dicer protein at cytoplasm by immunohistochemical analysis.

Sample: Paraffin-embedded mouse testis.

Dicer stained by Dicer antibody [HL1232] (GTX636580) diluted at 1:500.

Antigen Retrieval: Citrate buffer, pH 6.0, 15 min

**GTX636580 WB Image**

Various whole cell extracts (30 μ g) were separated by 5% SDS-PAGE, and the membrane was blotted with Dicer antibody [HL1232] (GTX636580) diluted at 1:1000. The HRP-conjugated anti-rabbit IgG antibody (GTX213110-01) was used to detect the primary antibody, and the signal was developed with Trident ECL plus-Enhanced.



For full product information, images and publications, please visit our [website](http://www.genetex.com).