



# SZABO SCANDIC

Part of Europa Biosite

## Produktinformation



Forschungsprodukte & Biochemikalien



Zellkultur & Verbrauchsmaterial



Diagnostik & molekulare Diagnostik



Laborgeräte & Service

Weitere Information auf den folgenden Seiten!  
See the following pages for more information!



### Lieferung & Zahlungsart

siehe unsere [Liefer- und Versandbedingungen](#)

### Zuschläge

- Mindermengenzuschlag
- Trockeneiszuschlag
- Gefahrgutzuschlag
- Expressversand

### SZABO-SCANDIC HandelsgmbH

Quellenstraße 110, A-1100 Wien

T. +43(0)1 489 3961-0

F. +43(0)1 489 3961-7

[mail@szabo-scandic.com](mailto:mail@szabo-scandic.com)

[www.szabo-scandic.com](http://www.szabo-scandic.com)

[linkedin.com/company/szaboscandic](https://www.linkedin.com/company/szaboscandic) 

## alpha Synuclein antibody [HL1242]

**Cat. No. GTX636641**

<b>Host</b>	Rabbit
<b>Clonality</b>	Monoclonal
<b>Isotype</b>	IgG
<b>Application</b>	WB, ICC/IF, IHC-P, IHC-Fr
<b>Reactivity</b>	Human, Mouse, Rat

**Package**  
100 µl, 25 µl

## APPLICATION

**Application Note**

\*Optimal dilutions/concentrations should be determined by the researcher.

Suggested dilution	Recommended dilution
WB	1:500-1:3000
ICC/IF	Assay dependent
IHC-P	Assay dependent
IHC-Fr	Assay dependent

Not tested in other applications.

## PROPERTIES

<b>Form</b>	Liquid
<b>Buffer</b>	PBS
<b>Preservative</b>	No Preservative
<b>Storage</b>	Store as concentrated solution. Centrifuge briefly prior to opening vial. For short-term storage (1-2 weeks), store at 4°C. For long-term storage, aliquot and store at -20°C or below. Avoid multiple freeze-thaw cycles.
<b>Concentration</b>	2 mg/ml (Please refer to the vial label for the specific concentration.)
<b>Immunogen</b>	Full length human alpha Synuclein Recombinant protein.
<b>Purification</b>	Affinity purified by Protein A.
<b>Conjugation</b>	Unconjugated

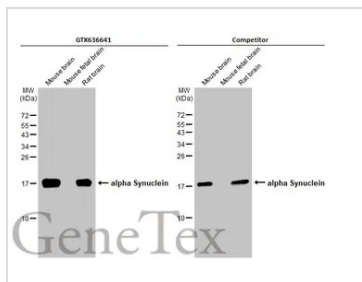
**Note** For laboratory research use only. Not for any clinical, therapeutic, or diagnostic use in humans or animals. Not for animal or human consumption.

Purchasers shall not, and agree not to enable third parties to, analyze, copy, reverse engineer or otherwise attempt to determine the structure or sequence of the product.



For full product information, images and publications, please visit our [website](#).

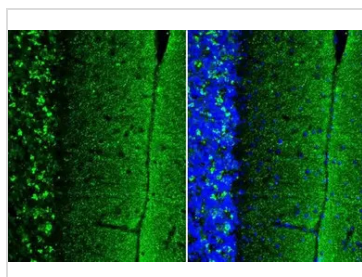
DATA IMAGES



**GTX636641 WB Image**

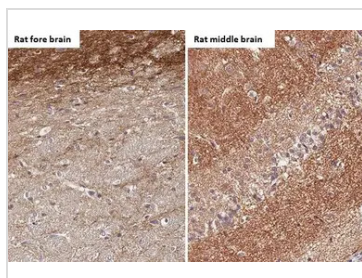
Various tissue extracts (50 µg) were separated by 15% SDS-PAGE, and the membranes were blotted with alpha Synuclein antibody [HL1242] (GTX636641) diluted at 1:1000 and competitor's antibody (Competitor) diluted at 1:1000. The HRP-conjugated anti-rabbit IgG antibody (GTX213110-01) was used to detect the primary antibody.

\*The competitor is not affiliated with GeneTex and does not endorse this product.



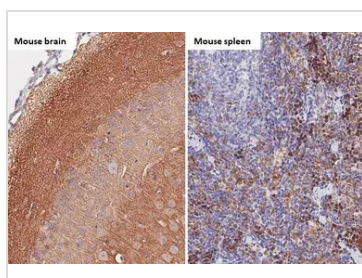
**GTX636641 IHC-Fr Image**

alpha Synuclein antibody [HL1242] detects alpha Synuclein protein by immunohistochemical analysis. Sample: Frozen-sectioned mouse cerebellum. Green: alpha Synuclein stained by alpha Synuclein antibody [HL1242] (GTX636641) diluted at 1:100.



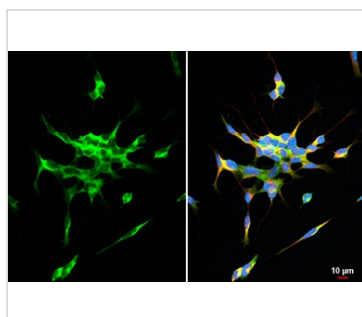
**GTX636641 IHC-P Image**

alpha Synuclein antibody [HL1242] detects alpha Synuclein protein by immunohistochemical analysis. Sample: Paraffin-embedded rat brain. alpha Synuclein stained by alpha Synuclein antibody [HL1242] (GTX636641) diluted at 1:100. Antigen Retrieval: Citrate buffer, pH 6.0, 15 min



**GTX636641 IHC-P Image**

alpha Synuclein antibody [HL1242] detects alpha Synuclein protein by immunohistochemical analysis. Sample: Paraffin-embedded mouse tissues. alpha Synuclein stained by alpha Synuclein antibody [HL1242] (GTX636641) diluted at 1:100. Antigen Retrieval: Citrate buffer, pH 6.0, 15 min



**GTX636641 ICC/IF Image**

alpha Synuclein antibody [HL1242] detects alpha Synuclein protein by immunofluorescent analysis. Sample: SH-SY-5Y cells were fixed in 4% paraformaldehyde at RT for 15 min. Green: alpha Synuclein stained by alpha Synuclein antibody [HL1242] (GTX636641) diluted at 1:500. Red: alpha Tubulin, a cytoskeleton marker, stained by alpha Tubulin antibody [GT114] (GTX628802) diluted at 1:1000. Blue: Fluoroshield with DAPI (GTX30920). Scale bar= 10µm.



For full product information, images and publications, please visit our [website](#).