



SZABO SCANDIC

Part of Europa Biosite

Produktinformation



Forschungsprodukte & Biochemikalien



Zellkultur & Verbrauchsmaterial



Diagnostik & molekulare Diagnostik



Laborgeräte & Service

Weitere Information auf den folgenden Seiten!
See the following pages for more information!



Lieferung & Zahlungsart

siehe unsere [Liefer- und Versandbedingungen](#)

Zuschläge

- Mindermengenzuschlag
- Trockeneiszuschlag
- Gefahrgutzuschlag
- Expressversand

SZABO-SCANDIC HandelsgmbH

Quellenstraße 110, A-1100 Wien

T. +43(0)1 489 3961-0

F. +43(0)1 489 3961-7

mail@szabo-scandic.com

www.szabo-scandic.com

[linkedin.com/company/szaboscandic](https://www.linkedin.com/company/szaboscandic) 

Respiratory Syncytial virus Nucleoprotein antibody [HL1248]

Cat. No. GTX636650

Host	Rabbit
Clonality	Monoclonal
Isotype	IgG
Application	WB, ICC/IF, IP, ELISA, Lateral Flow, Sandwich ELISA
Reactivity	Respiratory syncytial virus

★★★★★ Review (3)

Package
100 µl, 25 µl

APPLICATION

Application Note

*Optimal dilutions/concentrations should be determined by the researcher.

Suggested dilution	Recommended dilution
WB	1:1000-1:10000
ICC/IF	Assay dependent
IP	Assay dependent
ELISA	Assay dependent
Lateral Flow	Assay dependent
Sandwich ELISA	Assay dependent

Note : Capture : GTX636650, Detection : GTX636648 / GTX636649 or Capture : GTX636648, Detection : GTX636650.

Please notice that GTX636650 needs to be conjugated to HRP to function as the detection antibody when paired with GTX636648. Please contact us for custom HRP-conjugated antibody.

Not tested in other applications.

PROPERTIES

Form	Liquid
Buffer	PBS
Preservative	No Preservative
Storage	Store as concentrated solution. Centrifuge briefly prior to opening vial. For short-term storage (1-2 weeks), store at 4°C. For long-term storage, aliquot and store at -20°C or below. Avoid multiple freeze-thaw cycles.
Concentration	1 mg/ml (Please refer to the vial label for the specific concentration.)
Immunogen	Recombinant protein encompassing a sequence within the C-terminus region of Respiratory Syncytial virus Nucleoprotein. The exact sequence is proprietary.
Purification	Affinity purified by Protein A.
Conjugation	Unconjugated



For full product information, images and publications, please visit our [website](#).

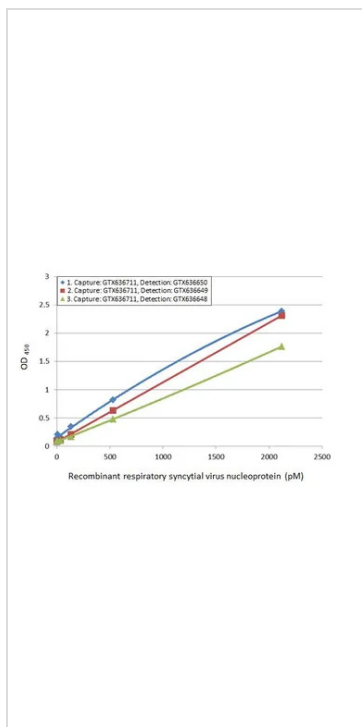
Date 2023 / 07 / 27 Page 1 of 2

For laboratory research use only. Not for any clinical, therapeutic, or diagnostic use in humans or animals. Not for animal or human consumption.

Note

Purchasers shall not, and agree not to enable third parties to, analyze, copy, reverse engineer or otherwise attempt to determine the structure or sequence of the product.

DATA IMAGES



GTX636650 ELISA Image

Sandwich ELISA detection of recombinant HEK293 expressed, full-length respiratory syncytial virus type A nucleoprotein, DDDDK tag (GTX136751-pro) using ELISA pairs below. The amount of capture and detection antibodies are 5 and 1 µg/mL, respectively.

Pair 1:

Capture: Respiratory Syncytial virus type A Nucleoprotein antibody [HL1297] (GTX636711)

Detection:

Respiratory Syncytial virus Nucleoprotein antibody [HL1248] (GTX636650) conjugated with HRP

Pair 2:

Capture: Respiratory Syncytial virus type A Nucleoprotein antibody [HL1297] (GTX636711)

Detection:

Respiratory Syncytial virus Nucleoprotein antibody [HL1247] (GTX636649) conjugated with HRP

Pair 3:

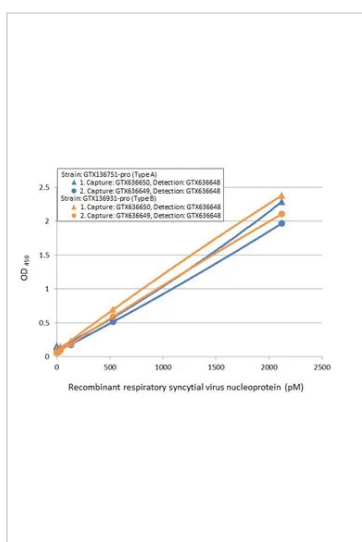
Capture: Respiratory Syncytial virus type A Nucleoprotein antibody [HL1297] (GTX636711)

Detection:

Respiratory Syncytial virus type A Nucleoprotein antibody [HL1246] (GTX636648) conjugated with HRP

Please notice that detection antibodies need to be conjugated to HRP to function when paired with capture one.

Please contact us for custom HRP-conjugated antibody.



GTX636650 ELISA Image

Sandwich ELISA of recombinant nucleoproteins (NP) derived from different strains of respiratory syncytial virus (i.e., type A; type B) using ELISA pairs below.

Pair 1:

Capture: Respiratory Syncytial virus Nucleoprotein antibody [HL1248] (GTX636650) (5 µg/mL)

Detection: Respiratory Syncytial virus Nucleoprotein antibody [HL1246] (GTX636648) conjugated with HRP (1 µg/mL)

Pair 2:

Capture: Respiratory Syncytial virus Nucleoprotein antibody [HL1247] (GTX636649) (5 µg/mL)

Detection: Respiratory Syncytial virus Nucleoprotein antibody [HL1246] (GTX636648) conjugated with HRP (1 µg/mL)

Please notice that detection antibodies need to be conjugated to HRP to function when paired with capture one.

Please contact us for custom HRP-conjugated antibody.



For full product information, images and publications, please visit our [website](#).