



SZABO SCANDIC

Part of Europa Biosite

Produktinformation



Forschungsprodukte & Biochemikalien



Zellkultur & Verbrauchsmaterial



Diagnostik & molekulare Diagnostik



Laborgeräte & Service

Weitere Information auf den folgenden Seiten!
See the following pages for more information!



Lieferung & Zahlungsart

siehe unsere [Liefer- und Versandbedingungen](#)

Zuschläge

- Mindermengenzuschlag
- Trockeneiszuschlag
- Gefahrgutzuschlag
- Expressversand

SZABO-SCANDIC HandelsgmbH

Quellenstraße 110, A-1100 Wien

T. +43(0)1 489 3961-0

F. +43(0)1 489 3961-7

mail@szabo-scandic.com

www.szabo-scandic.com

[linkedin.com/company/szaboscandic](https://www.linkedin.com/company/szaboscandic) 

Strep epitope Tag antibody [HL1251]

Cat. No. GTX636653

Host	Rabbit
Clonality	Monoclonal
Isotype	IgG
Application	WB, ICC/IF, IP, IHC-P (cell pellet)

Package
100 µl, 25 µl

APPLICATION

Application Note

*Optimal dilutions/concentrations should be determined by the researcher.

Suggested dilution	Recommended dilution
--------------------	----------------------

WB	1:500-1:3000
ICC/IF	Assay dependent
IP	Assay dependent
IHC-P (cell pellet)	Assay dependent

Not tested in other applications.

PROPERTIES

Form	Liquid
Buffer	PBS
Preservative	No Preservative
Storage	Store as concentrated solution. Centrifuge briefly prior to opening vial. For short-term storage (1-2 weeks), store at 4°C. For long-term storage, aliquot and store at -20°C or below. Avoid multiple freeze-thaw cycles.
Concentration	1 mg/ml (Please refer to the vial label for the specific concentration.)
Immunogen	The immunogen used to generate this antibody corresponds to Strep epitope Tag
Purification	Affinity purified by Protein A.
Conjugation	Unconjugated

Note

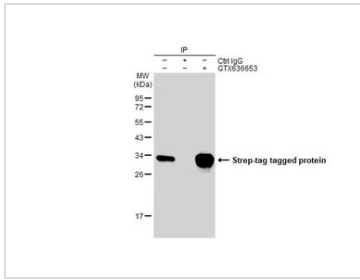
For laboratory research use only. Not for any clinical, therapeutic, or diagnostic use in humans or animals. Not for animal or human consumption.

Purchasers shall not, and agree not to enable third parties to, analyze, copy, reverse engineer or otherwise attempt to determine the structure or sequence of the product.



For full product information, images and publications, please visit our [website](#).

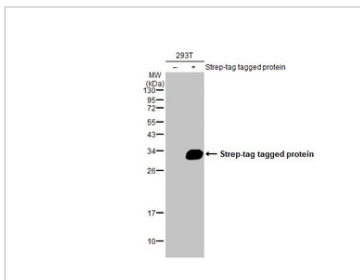
DATA IMAGES



GTX636653 IP Image

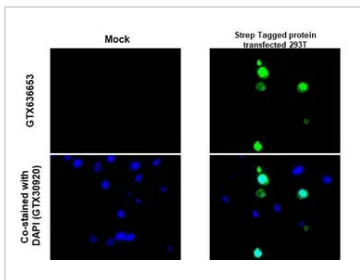
Immunoprecipitation of Strep epitope Tag protein from 293T whole cell extracts using 5 µg of Strep epitope Tag antibody [HL1251] (GTX636653).

Western blot analysis was performed using Strep epitope Tag antibody [HL1251] (GTX636653). EasyBlot HRP-conjugated anti rabbit IgG antibody (GTX221666-01).



GTX636653 WB Image

Non-transfected (-) and transfected (+) 293T whole cell extracts (30 µg) were separated by 12% SDS-PAGE, and the membrane was blotted with Strep epitope Tag antibody [HL1251] (GTX636653) diluted at 1:1000. The HRP-conjugated anti-rabbit IgG antibody (GTX213110-01) was used to detect the primary antibody.



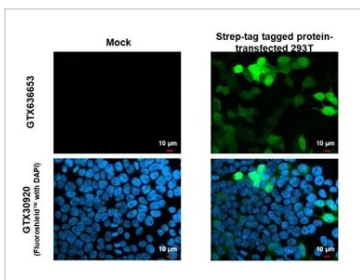
GTX636653 IHC-P (cell pellet) Image

Strep epitope Tag antibody [HL1251] detects Strep epitope Tag protein at cytoplasm by immunohistochemical analysis.

Sample: Paraffin-embedded mock and Strep Tagged protein transfected 293T cell pellet.

Green: Strep epitope Tag stained by Strep epitope Tag antibody [HL1251] (GTX636653) diluted at 1:1000.

Antigen Retrieval: Citrate buffer, pH 6.0, 15 min



GTX636653 ICC/IF Image

Strep epitope Tag antibody [HL1251] detects Strep epitope Tag protein by immunofluorescent analysis.

Sample: Mock and transfected 293T cells were fixed in 4% paraformaldehyde at RT for 15 min.

Green: Strep epitope Tag stained by Strep epitope Tag antibody [HL1251] (GTX636653) diluted at 1:500.

Blue: Fluoroshield with DAPI (GTX30920).



For full product information, images and publications, please visit our [website](#).