



# SZABO SCANDIC

Part of Europa Biosite

## Produktinformation



Forschungsprodukte & Biochemikalien



Zellkultur & Verbrauchsmaterial



Diagnostik & molekulare Diagnostik



Laborgeräte & Service

Weitere Information auf den folgenden Seiten!  
See the following pages for more information!



### Lieferung & Zahlungsart

siehe unsere [Liefer- und Versandbedingungen](#)

### Zuschläge

- Mindermengenzuschlag
- Trockeneiszuschlag
- Gefahrgutzuschlag
- Expressversand

### SZABO-SCANDIC HandelsgmbH

Quellenstraße 110, A-1100 Wien

T. +43(0)1 489 3961-0

F. +43(0)1 489 3961-7

[mail@szabo-scandic.com](mailto:mail@szabo-scandic.com)

[www.szabo-scandic.com](http://www.szabo-scandic.com)

[linkedin.com/company/szaboscandic](https://www.linkedin.com/company/szaboscandic) 

## Influenza A virus M1 (matrix protein) antibody [HL1273]

**Cat. No. GTX636675**

<b>Host</b>	Rabbit
<b>Clonality</b>	Monoclonal
<b>Isotype</b>	IgG
<b>Application</b>	WB, ICC/IF, IHC-P (cell pellet)
<b>Reactivity</b>	Influenza A virus

**Package**  
100 µl, 25 µl

## APPLICATION

**Application Note**

\*Optimal dilutions/concentrations should be determined by the researcher.

Suggested dilution	Recommended dilution
WB	1:1000-1:10000
ICC/IF	Assay dependent
IHC-P (cell pellet)	Assay dependent

Not tested in other applications.

## PROPERTIES

<b>Form</b>	Liquid
<b>Buffer</b>	PBS
<b>Preservative</b>	No Preservative
<b>Storage</b>	Store as concentrated solution. Centrifuge briefly prior to opening vial. For short-term storage (1-2 weeks), store at 4°C. For long-term storage, aliquot and store at -20°C or below. Avoid multiple freeze-thaw cycles.
<b>Concentration</b>	1 mg/ml (Please refer to the vial label for the specific concentration.)
<b>Immunogen</b>	Recombinant fragment corresponding to C-terminal region of Influenza A virus M1 (A/Puerto Rico/8/1934(H1N1)). The exact sequence is proprietary.
<b>Purification</b>	Affinity purified by Protein A.
<b>Conjugation</b>	Unconjugated

**Note**

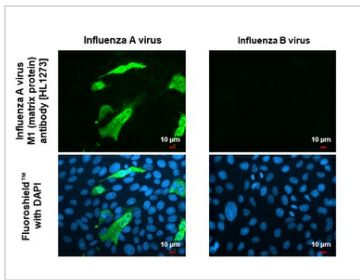
For laboratory research use only. Not for any clinical, therapeutic, or diagnostic use in humans or animals. Not for animal or human consumption.

Purchasers shall not, and agree not to enable third parties to, analyze, copy, reverse engineer or otherwise attempt to determine the structure or sequence of the product.



For full product information, images and publications, please visit our [website](#).

DATA IMAGES



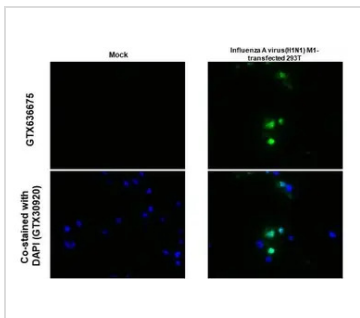
**GTX636675 ICC/IF Image**

Immunofluorescent analysis of Influenza virus infected cells using Influenza A virus M1 (matrix protein) antibody [HL1273] (GTX636675).

Sample: Influenza A and B virus infected cells slide.

Green: Influenza A virus M1 (matrix protein) antibody [HL1273] (GTX636675) diluted at 1:100.

Blue: Fluoroshield with DAPI (GTX30920).



**GTX636675 IHC-P (cell pellet) Image**

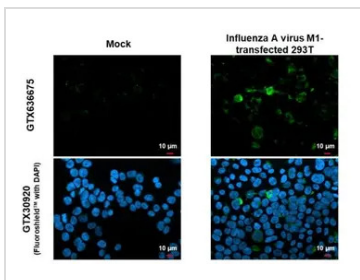
Influenza A virus M1 (matrix protein) antibody [HL1273] detects Influenza A virus M1 (matrix protein) protein at cytoplasm by immunohistochemical analysis.

Sample: Paraffin-embedded Influenza A virus M1 transfected 293T.

Green: Influenza A virus M1 (matrix protein) stained by Influenza A virus M1 (matrix protein) antibody [HL1273] (GTX636675) diluted at 1:1000.

Blue: Fluoroshield with DAPI (GTX30920).

Antigen Retrieval: Citrate buffer, pH 6.0, 15 min



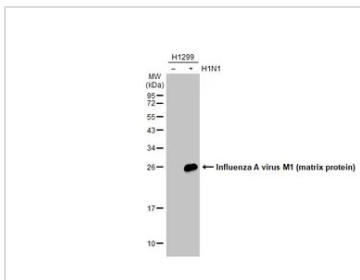
**GTX636675 ICC/IF Image**

Influenza A virus M1 (matrix protein) antibody [HL1273] detects Influenza A virus M1 (matrix protein) protein by immunofluorescent analysis.

Sample: Mock and transfected 293T cells were fixed in 4% paraformaldehyde at RT for 15 min.

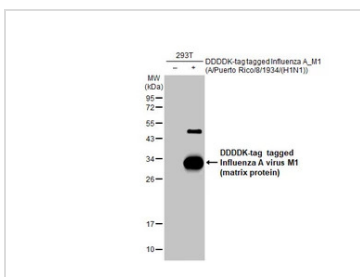
Green: Influenza A virus M1 (matrix protein) stained by Influenza A virus M1 (matrix protein) antibody [HL1273] (GTX636675) diluted at 1:500.

Blue: Fluoroshield with DAPI (GTX30920).



**GTX636675 WB Image**

Non-infected (-) and infected (+) H1299 whole cell extracts (15 μg) were separated by 12% SDS-PAGE, and the membrane was blotted with Influenza A virus M1 (matrix protein) antibody [HL1273] (GTX636675) diluted at 1:5000. The HRP-conjugated anti-rabbit IgG antibody (GTX213110-01) was used to detect the primary antibody.



**GTX636675 WB Image**

Non-transfected (-) and transfected (+) 293T whole cell extracts (30 μg) were separated by 12% SDS-PAGE, and the membrane was blotted with Influenza A virus M1 (matrix protein) antibody [HL1273] (GTX636675) diluted at 1:5000. The HRP-conjugated anti-rabbit IgG antibody (GTX213110-01) was used to detect the primary antibody.



For full product information, images and publications, please visit our [website](#).