



SZABO SCANDIC

Part of Europa Biosite

Produktinformation



Forschungsprodukte & Biochemikalien



Zellkultur & Verbrauchsmaterial



Diagnostik & molekulare Diagnostik



Laborgeräte & Service

Weitere Information auf den folgenden Seiten!
See the following pages for more information!



Lieferung & Zahlungsart

siehe unsere [Liefer- und Versandbedingungen](#)

Zuschläge

- Mindermengenzuschlag
- Trockeneiszuschlag
- Gefahrgutzuschlag
- Expressversand

SZABO-SCANDIC HandelsgmbH

Quellenstraße 110, A-1100 Wien

T. +43(0)1 489 3961-0

F. +43(0)1 489 3961-7

mail@szabo-scandic.com

www.szabo-scandic.com

[linkedin.com/company/szaboscandic](https://www.linkedin.com/company/szaboscandic) 

Respiratory Syncytial virus Nucleoprotein antibody [HL1291]

Cat. No. GTX636705

Host	Rabbit
Clonality	Monoclonal
Isotype	IgG
Application	WB, ELISA, Sandwich ELISA
Reactivity	Respiratory syncytial virus

Package

100 µl, 25 µl

APPLICATION

Application Note

*Optimal dilutions/concentrations should be determined by the researcher.

Suggested dilution	Recommended dilution
WB	Assay dependent
ELISA	Assay dependent
Sandwich ELISA	Assay dependent

Note : Capture: GTX636647, Detection: GTX636705.

Please notice that the detected antibody needs to be conjugated to HRP to function when paired with capture antibodies. Please contact us for custom HRP-conjugated antibody.

Not tested in other applications.

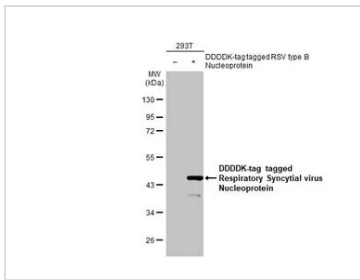
PROPERTIES

Form	Liquid
Buffer	PBS
Preservative	No Preservative
Storage	Store as concentrated solution. Centrifuge briefly prior to opening vial. For short-term storage (1-2 weeks), store at 4°C. For long-term storage, aliquot and store at -20°C or below. Avoid multiple freeze-thaw cycles.
Concentration	1 mg/ml (Please refer to the vial label for the specific concentration.)
Purification	Affinity purified by Protein A.
Conjugation	Unconjugated
Note	For laboratory use only. Not for any clinical, therapeutic, or diagnostic use in humans or animals. Not for animal or human consumption.



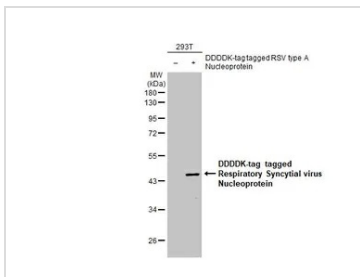
For full product information, images and publications, please visit our [website](#).

DATA IMAGES



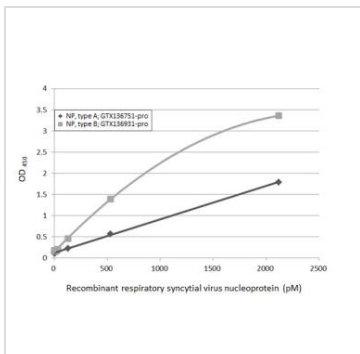
GTX636705 WB Image

Non-transfected (-) and transfected (+) 293T whole cell extracts (30 µg) were separated by 10% SDS-PAGE, and the membrane was blotted with Respiratory Syncytial virus Nucleoprotein antibody [HL1291] (GTX636705) diluted at 1:5000. The HRP-conjugated anti-rabbit IgG antibody (GTX213110-01) was used to detect the primary antibody.



GTX636705 WB Image

Non-transfected (-) and transfected (+) 293T whole cell extracts (30 µg) were separated by 10% SDS-PAGE, and the membrane was blotted with Respiratory Syncytial virus Nucleoprotein antibody [HL1291] (GTX636705) diluted at 1:5000. The HRP-conjugated anti-rabbit IgG antibody (GTX213110-01) was used to detect the primary antibody.



GTX636705 ELISA Image

Sandwich ELISA detection of recombinant nucleoproteins (NP) derived from different strains of respiratory syncytial virus (i.e., type A; type B) using antibodies as below.

Capture: Respiratory Syncytial virus Nucleoprotein antibody [HL1245] (GTX636647) (5 µg/mL)

Detection: HRP-conjugated Respiratory Syncytial virus Nucleoprotein antibody [HL1291] (GTX636705) (1 µg/mL)

Please notice that GTX636705 needs to be conjugated to HRP to function as the detection antibody when paired with GTX636647. Please contact us for custom HRP-conjugated antibody.



For full product information, images and publications, please visit our [website](#).