



SZABO SCANDIC

Part of Europa Biosite

Produktinformation



Forschungsprodukte & Biochemikalien



Zellkultur & Verbrauchsmaterial



Diagnostik & molekulare Diagnostik



Laborgeräte & Service

Weitere Information auf den folgenden Seiten!
See the following pages for more information!



Lieferung & Zahlungsart

siehe unsere [Liefer- und Versandbedingungen](#)

Zuschläge

- Mindermengenzuschlag
- Trockeneiszuschlag
- Gefahrgutzuschlag
- Expressversand

SZABO-SCANDIC HandelsgmbH

Quellenstraße 110, A-1100 Wien

T. +43(0)1 489 3961-0

F. +43(0)1 489 3961-7

mail@szabo-scandic.com

www.szabo-scandic.com

[linkedin.com/company/szaboscandic](https://www.linkedin.com/company/szaboscandic) 

Respiratory Syncytial virus Nucleoprotein antibody [HL1295]

Cat. No. GTX636709

Host	Rabbit
Clonality	Monoclonal
Isotype	IgG
Application	WB, ICC/IF, ELISA, Sandwich ELISA
Reactivity	Respiratory syncytial virus

★★★★★ Review (2)

Package
100 µl, 25 µl

APPLICATION

Application Note

*Optimal dilutions/concentrations should be determined by the researcher.

Suggested dilution	Recommended dilution
WB	1:500-1:10000
ICC/IF	Assay dependent
ELISA	Assay dependent
Sandwich ELISA	Assay dependent

Not tested in other applications.

PROPERTIES

Form	Liquid
Buffer	PBS
Preservative	No preservative
Storage	Store as concentrated solution. Centrifuge briefly prior to opening vial. For short-term storage (1-2 weeks), store at 4°C. For long-term storage, aliquot and store at -20°C or below. Avoid multiple freeze-thaw cycles.
Concentration	1 mg/ml (Please refer to the vial label for the specific concentration.)
Immunogen	Recombinant protein encompassing a sequence within the center region of Respiratory Syncytial virus Nucleoprotein. The exact sequence is proprietary.
Purification	Affinity purified by Protein A.
Conjugation	Unconjugated

Note

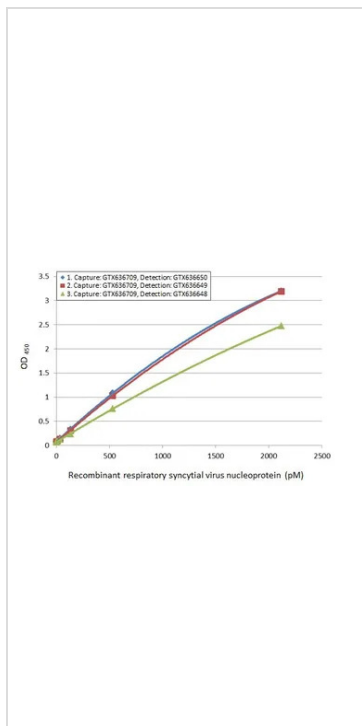
For laboratory research use only. Not for any clinical, therapeutic, or diagnostic use in humans or animals. Not for animal or human consumption.

Purchasers shall not, and agree not to enable third parties to, analyze, copy, reverse engineer or otherwise attempt to determine the structure or sequence of the product.



For full product information, images and publications, please visit our [website](#).

DATA IMAGES



GTX636709 ELISA Image

Sandwich ELISA detection of recombinant HEK293 expressed, full-length respiratory syncytial virus type A nucleoprotein, DDDDK tag (GTX136751-pro) using ELISA pairs below. The amount of capture and detection antibodies are 5 and 1 µg/mL, respectively.

Pair 1:

Capture: Respiratory Syncytial virus Nucleoprotein antibody [HL1295] (GTX636709)

Detection:

Respiratory Syncytial virus Nucleoprotein antibody [HL1248] (GTX636650) conjugated with HRP

Pair 2:

Capture: Respiratory Syncytial virus Nucleoprotein antibody [HL1295] (GTX636709)

Detection:

Respiratory Syncytial virus Nucleoprotein antibody [HL1247] (GTX636649) conjugated with HRP

Pair 3:

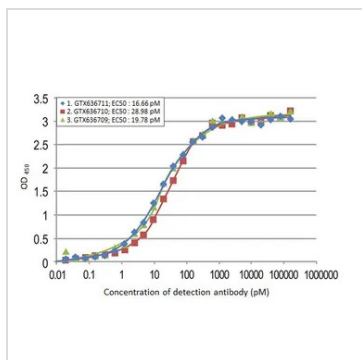
Capture: Respiratory Syncytial virus Nucleoprotein antibody [HL1295] (GTX636709)

Detection:

Respiratory Syncytial virus type A Nucleoprotein antibody [HL1246] (GTX636648) conjugated with HRP

Please notice that detection antibodies need to be conjugated to HRP to function when paired with capture one.

Please contact us for custom HRP-conjugated antibody.



GTX636709 ELISA Image

Indirect ELISA analysis performed by coating plate with recombinant HEK293 expressed, N-terminal respiratory syncytial virus type A nucleoprotein (50 ng). Coated protein was probed with Respiratory Syncytial virus Nucleoprotein antibodies (160000-1.9*10⁻² pM) below. Goat anti-rabbit IgG antibody (HRP) (GTX213110-01) (1:10000) was used to detect bound primary antibody.

Antibodies:

1. Respiratory Syncytial virus type A Nucleoprotein antibody [HL1297] (GTX636711)
2. Respiratory Syncytial virus Nucleoprotein antibody [HL1296] (GTX636710)
3. Respiratory Syncytial virus Nucleoprotein antibody [HL1295] (GTX636709)



For full product information, images and publications, please visit our [website](#).