



SZABO SCANDIC

Part of Europa Biosite

Produktinformation



Forschungsprodukte & Biochemikalien



Zellkultur & Verbrauchsmaterial



Diagnostik & molekulare Diagnostik



Laborgeräte & Service

Weitere Information auf den folgenden Seiten!
See the following pages for more information!



Lieferung & Zahlungsart

siehe unsere [Liefer- und Versandbedingungen](#)

Zuschläge

- Mindermengenzuschlag
- Trockeneiszuschlag
- Gefahrgutzuschlag
- Expressversand

SZABO-SCANDIC HandelsgmbH

Quellenstraße 110, A-1100 Wien

T. +43(0)1 489 3961-0

F. +43(0)1 489 3961-7

mail@szabo-scandic.com

www.szabo-scandic.com

[linkedin.com/company/szaboscandic](https://www.linkedin.com/company/szaboscandic) 

GFAP antibody [HL1308]

Cat. No. GTX636726

Host	Rabbit
Clonality	Monoclonal
Isotype	IgG
Application	ICC/IF, IHC-P, IHC-Fr
Reactivity	Mouse, Rat

Package
100 µl, 25 µl

APPLICATION

Application Note

*Optimal dilutions/concentrations should be determined by the researcher.

Suggested dilution	Recommended dilution
ICC/IF	Assay dependent
IHC-P	1:100-1:1000
IHC-Fr	Assay dependent

Not tested in other applications.

Calculated MW 50 kDa. ([Note](#))

PROPERTIES

Form	Liquid
Buffer	PBS
Preservative	No Preservative
Storage	Store as concentrated solution. Centrifuge briefly prior to opening vial. For short-term storage (1-2 weeks), store at 4°C. For long-term storage, aliquot and store at -20°C or below. Avoid multiple freeze-thaw cycles.
Concentration	1 mg/ml (Please refer to the vial label for the specific concentration.)
Immunogen	Recombinant protein encompassing a sequence within the center region of human GFAP. The exact sequence is proprietary.
Purification	Affinity purified by Protein A.
Conjugation	Unconjugated

Note

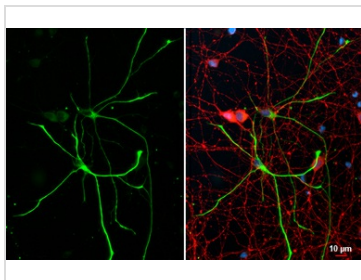
For laboratory research use only. Not for any clinical, therapeutic, or diagnostic use in humans or animals. Not for animal or human consumption.

Purchasers shall not, and agree not to enable third parties to, analyze, copy, reverse engineer or otherwise attempt to determine the structure or sequence of the product.



For full product information, images and publications, please visit our [website](#).

DATA IMAGES

**GTX636726 ICC/IF Image**

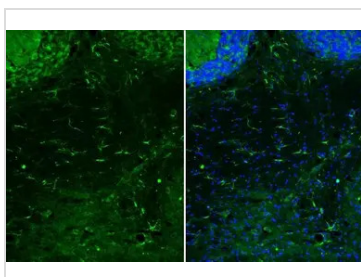
GFAP antibody [HL1308] detects GFAP protein at glia cells by immunofluorescent analysis.

Sample: DIV10 rat E18 primary hippocampal neuron and glia cells were fixed in 4% paraformaldehyde at RT for 15 min.

Green: GFAP stained by GFAP antibody [HL1308] (GTX636726) diluted at 1:250.

Red: Tau, a cytoskeleton marker, stained by Tau antibody [GT287] (GTX634809) diluted at 1:500.

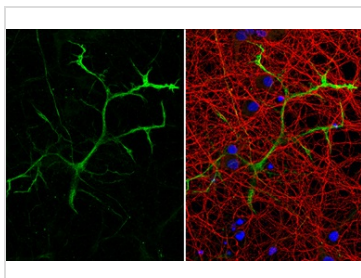
Blue: Fluoroshield with DAPI (GTX30920).

**GTX636726 IHC-Fr Image**

GFAP antibody [HL1308] detects GFAP protein by immunohistochemical analysis.

Sample: Frozen-sectioned mouse mouse cerebellum.

Green: GFAP stained by GFAP antibody [HL1308] (GTX636726) diluted at 1:100.

**GTX636726 ICC/IF Image**

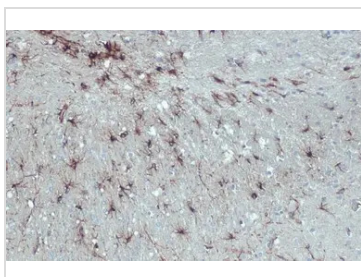
GFAP antibody [HL1308] detects GFAP protein at glia cells by immunofluorescent analysis.

Sample: DIV9 rat E18 primary cortical neuron and glia cells were fixed in 4% paraformaldehyde at RT for 15 min.

Green: GFAP stained by GFAP antibody [HL1308] (GTX636726) diluted at 1:250.

Red: Tau, an axon marker, stained by Tau antibody [GT287] (GTX634809) diluted at 1:500.

Blue: Fluoroshield with DAPI (GTX30920).

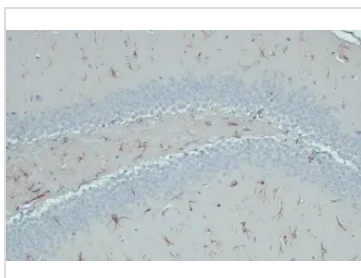
**GTX636726 IHC-P Image**

GFAP antibody [HL1308] detects GFAP protein at cytoplasm by immunohistochemical analysis.

Sample: Paraffin-embedded rat brain.

GFAP stained by GFAP antibody [HL1308] (GTX636726) diluted at 1:100.

Antigen Retrieval: Citrate buffer, pH 6.0, 15 min

**GTX636726 IHC-P Image**

GFAP antibody [HL1308] detects GFAP protein at cytoplasm by immunohistochemical analysis.

Sample: Paraffin-embedded mouse brain.

GFAP stained by GFAP antibody [HL1308] (GTX636726) diluted at 1:100.

Antigen Retrieval: Citrate buffer, pH 6.0, 15 min



For full product information, images and publications, please visit our [website](#).