



SZABO SCANDIC

Part of Europa Biosite

Produktinformation



Forschungsprodukte & Biochemikalien



Zellkultur & Verbrauchsmaterial



Diagnostik & molekulare Diagnostik



Laborgeräte & Service

Weitere Information auf den folgenden Seiten!
See the following pages for more information!



Lieferung & Zahlungsart

siehe unsere [Liefer- und Versandbedingungen](#)

Zuschläge

- Mindermengenzuschlag
- Trockeneiszuschlag
- Gefahrgutzuschlag
- Expressversand

SZABO-SCANDIC HandelsgmbH

Quellenstraße 110, A-1100 Wien

T. +43(0)1 489 3961-0

F. +43(0)1 489 3961-7

mail@szabo-scandic.com

www.szabo-scandic.com

[linkedin.com/company/szaboscandic](https://www.linkedin.com/company/szaboscandic) 

ATP6V1H antibody [HL1316]

Cat. No. GTX636734

Host	Rabbit
Clonality	Monoclonal
Isotype	IgG
Application	WB, IHC-P
Reactivity	Human, Mouse, Drosophila

Package
100 µl, 25 µl

APPLICATION

Application Note

*Optimal dilutions/concentrations should be determined by the researcher.

Suggested dilution	Recommended dilution
WB	1:500-1:3000
IHC-P	Assay dependent

Not tested in other applications.

Calculated MW 56 kDa. ([Note](#))

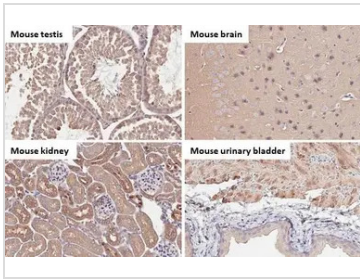
PROPERTIES

Form	Liquid
Buffer	PBS
Preservative	No Preservative
Storage	Store as concentrated solution. Centrifuge briefly prior to opening vial. For short-term storage (1-2 weeks), store at 4°C. For long-term storage, aliquot and store at -20°C or below. Avoid multiple freeze-thaw cycles.
Concentration	1 mg/ml (Please refer to the vial label for the specific concentration.)
Immunogen	Recombinant protein encompassing a sequence within the center region of human ATP6V1H. The exact sequence is proprietary.
Purification	Affinity purified by Protein A.
Conjugation	Unconjugated
Note	For laboratory research use only. Not for any clinical, therapeutic, or diagnostic use in humans or animals. Not for animal or human consumption. Purchasers shall not, and agree not to enable third parties to, analyze, copy, reverse engineer or otherwise attempt to determine the structure or sequence of the product.



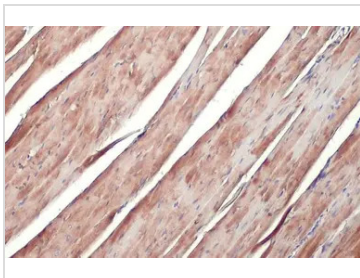
For full product information, images and publications, please visit our [website](#).

DATA IMAGES



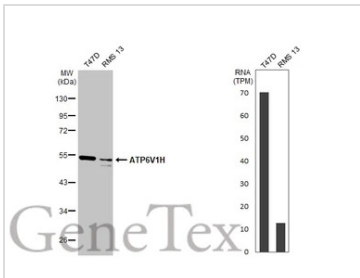
GTX636734 IHC-P Image

ATP6V1H antibody [HL1316] detects ATP6V1H protein by immunohistochemical analysis.
 Sample: Paraffin-embedded mouse tissues.
 ATP6V1H stained by ATP6V1H antibody [HL1316] (GTX636734) diluted at 1:100.
 Antigen Retrieval: Citrate buffer, pH 6.0, 15 min



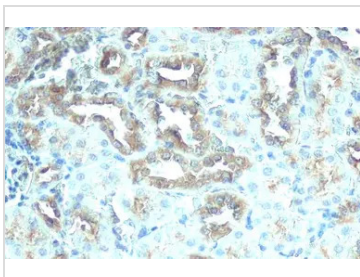
GTX636734 IHC-P Image

ATP6V1H antibody [HL1316] detects ATP6V1H protein at cytoplasm by immunohistochemical analysis.
 Sample: Paraffin-embedded mouse heart.
 ATP6V1H stained by ATP6V1H antibody [HL1316] (GTX636734) diluted at 1:200.
 Antigen Retrieval: Citrate buffer, pH 6.0, 15 min



GTX636734 WB Image

Various whole cell extracts (30 µg) were separated by 10% SDS-PAGE, and the membrane was blotted with ATP6V1H antibody [HL1316] (GTX636734) diluted at 1:1000. The HRP-conjugated anti-rabbit IgG antibody (GTX213110-01) was used to detect the primary antibody.



GTX636734 IHC-P Image

ATP6V1H antibody [HL1316] detects ATP6V1H protein at cytoplasm by immunohistochemical analysis.
 Sample: Paraffin-embedded mouse kidney.
 ATP6V1H stained by ATP6V1H antibody [HL1316] (GTX636734) diluted at 1:100.
 Antigen Retrieval: Citrate buffer, pH 6.0, 15 min



GTX636734 IHC-P Image

ATP6V1H antibody [HL1316] detects ATP6V1H protein at cytoplasm by immunohistochemical analysis.
 Sample: Paraffin-embedded mouse muscle.
 ATP6V1H stained by ATP6V1H antibody [HL1316] (GTX636734) diluted at 1:200.
 Antigen Retrieval: Citrate buffer, pH 6.0, 15 min



For full product information, images and publications, please visit our [website](#).