



# SZABO SCANDIC

Part of Europa Biosite

## Produktinformation



Forschungsprodukte & Biochemikalien



Zellkultur & Verbrauchsmaterial



Diagnostik & molekulare Diagnostik



Laborgeräte & Service

Weitere Information auf den folgenden Seiten!  
See the following pages for more information!



### Lieferung & Zahlungsart

siehe unsere [Liefer- und Versandbedingungen](#)

### Zuschläge

- Mindermengenzuschlag
- Trockeneiszuschlag
- Gefahrgutzuschlag
- Expressversand

### SZABO-SCANDIC HandelsgmbH

Quellenstraße 110, A-1100 Wien

T. +43(0)1 489 3961-0

F. +43(0)1 489 3961-7

[mail@szabo-scandic.com](mailto:mail@szabo-scandic.com)

[www.szabo-scandic.com](http://www.szabo-scandic.com)

[linkedin.com/company/szaboscandic](https://www.linkedin.com/company/szaboscandic) 

## EpCAM antibody [HL1339]

**Cat. No. GTX636759**

<b>Host</b>	Rabbit
<b>Clonality</b>	Monoclonal
<b>Isotype</b>	IgG
<b>Application</b>	WB, ICC/IF, IHC-P, FACS
<b>Reactivity</b>	Human, Mouse, Rat

**Package**  
100 µl, 25 µl

## APPLICATION

**Application Note**

\*Optimal dilutions/concentrations should be determined by the researcher.

Suggested dilution	Recommended dilution
WB	1:500-1:3000
ICC/IF	Assay dependent
IHC-P	Assay dependent
FACS	Assay dependent

Not tested in other applications.

**Calculated MW** 35 kDa. ([Note](#))

## PROPERTIES

<b>Form</b>	Liquid
<b>Buffer</b>	PBS
<b>Preservative</b>	No Preservative
<b>Storage</b>	Store as concentrated solution. Centrifuge briefly prior to opening vial. For short-term storage (1-2 weeks), store at 4°C. For long-term storage, aliquot and store at -20°C or below. Avoid multiple freeze-thaw cycles.
<b>Concentration</b>	0.5 mg/ml (Please refer to the vial label for the specific concentration.)
<b>Immunogen</b>	Recombinant protein encompassing a sequence within the center region of human EpCAM. The exact sequence is proprietary.
<b>Purification</b>	Affinity purified by Protein A.
<b>Conjugation</b>	Unconjugated

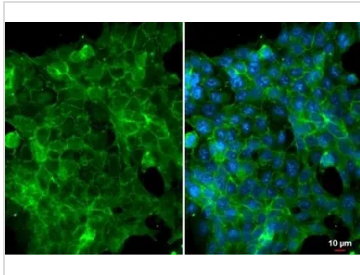


For full product information, images and publications, please visit our [website](#).

For laboratory research use only. Not for any clinical, therapeutic, or diagnostic use in humans or animals. Not for animal or human consumption.

**Note**  
 Purchasers shall not, and agree not to enable third parties to, analyze, copy, reverse engineer or otherwise attempt to determine the structure or sequence of the product.

DATA IMAGES



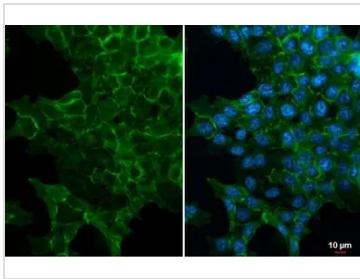
**GTX636759 ICC/IF Image**

EpCAM antibody [HL1339] detects EpCAM protein at cell membrane and cell junction by immunofluorescent analysis.

Sample: HCT116 cells were fixed in ice-cold MeOH for 5 min.

Green: EpCAM stained by EpCAM antibody [HL1339] (GTX636759) diluted at 1:500.

Blue: Fluoroshield with DAPI (GTX30920).



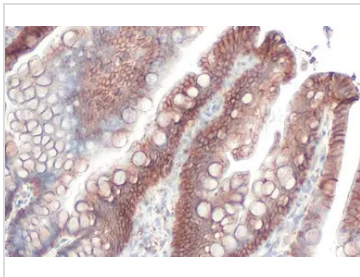
**GTX636759 ICC/IF Image**

EpCAM antibody [HL1339] detects EpCAM protein at cell membrane and cell junction by immunofluorescent analysis.

Sample: HCT116 cells were fixed in ice-cold MeOH for 5 min.

Green: EpCAM stained by EpCAM antibody [HL1339] (GTX636759) diluted at 1:500.

Blue: Fluoroshield with DAPI (GTX30920).



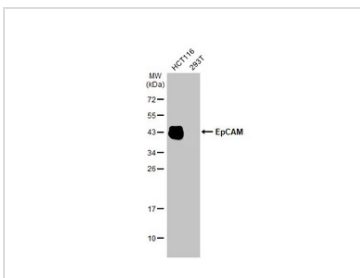
**GTX636759 IHC-P Image**

EpCAM antibody [HL1339] detects EpCAM protein at cell membrane by immunohistochemical analysis.

Sample: Paraffin-embedded rat colon.

EpCAM stained by EpCAM antibody [HL1339] (GTX636759) diluted at 1:50.

Antigen Retrieval: Citrate buffer, pH 6.0, 15 min



**GTX636759 WB Image**

Various whole cell extracts (30 µg) were separated by 12% SDS-PAGE, and the membrane was blotted with EpCAM antibody [HL1339] (GTX636759) diluted at 1:500. The HRP-conjugated anti-rabbit IgG antibody (GTX213110-01) was used to detect the primary antibody.



For full product information, images and publications, please visit our [website](#).