



SZABO SCANDIC

Part of Europa Biosite

Produktinformation



Forschungsprodukte & Biochemikalien



Zellkultur & Verbrauchsmaterial



Diagnostik & molekulare Diagnostik



Laborgeräte & Service

Weitere Information auf den folgenden Seiten!
See the following pages for more information!



Lieferung & Zahlungsart

siehe unsere [Liefer- und Versandbedingungen](#)

Zuschläge

- Mindermengenzuschlag
- Trockeneiszuschlag
- Gefahrgutzuschlag
- Expressversand

SZABO-SCANDIC HandelsgmbH

Quellenstraße 110, A-1100 Wien

T. +43(0)1 489 3961-0

F. +43(0)1 489 3961-7

mail@szabo-scandic.com

www.szabo-scandic.com

[linkedin.com/company/szaboscandic](https://www.linkedin.com/company/szaboscandic) 

Swine Influenza A virus G4 EA H1N1 HA (Hemagglutinin) antibody [HL1343]

Cat. No. GTX636763

Host	Rabbit
Clonality	Monoclonal
Isotype	IgG
Application	WB, ICC/IF, IHC-P (cell pellet)
Reactivity	Swine Influenza A virus

Package

100 µl, 25 µl

APPLICATION

Application Note

*Optimal dilutions/concentrations should be determined by the researcher.

Suggested dilution	Recommended dilution
WB	1:1000-1:10000
ICC/IF	Assay dependent
IHC-P (cell pellet)	Assay dependent

Not tested in other applications.

PROPERTIES

Form	Liquid
Buffer	PBS
Preservative	No Preservative
Storage	Store as concentrated solution. Centrifuge briefly prior to opening vial. For short-term storage (1-2 weeks), store at 4°C. For long-term storage, aliquot and store at -20°C or below. Avoid multiple freeze-thaw cycles.
Concentration	1 mg/ml (Please refer to the vial label for the specific concentration.)
Immunogen	Recombinant protein encompassing a sequence within the center region of Swine Influenza A virus G4 EA H1N1 HA (Hemagglutinin) (A/swine/Henan/SN10/2018). The exact sequence is proprietary.
Purification	Affinity purified by Protein A.
Conjugation	Unconjugated

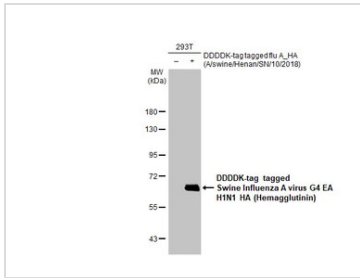
Note

For laboratory research use only. Not for any clinical, therapeutic, or diagnostic use in humans or animals. Not for animal or human consumption.

Purchasers shall not, and agree not to enable third parties to, analyze, copy, reverse engineer or otherwise attempt to determine the structure or sequence of the product.

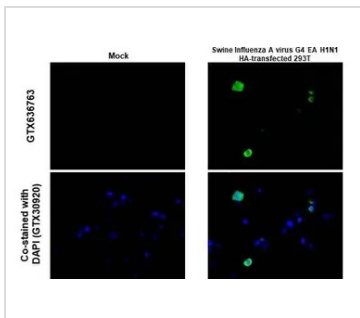
For full product information, images and publications, please visit our [website](#).

DATA IMAGES



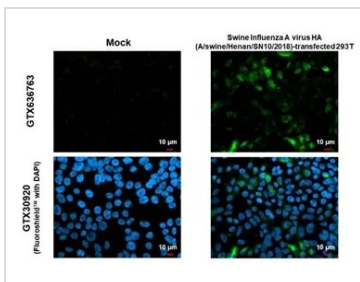
GTX636763 WB Image

Non-transfected (-) and transfected (+) 293T whole cell extracts (30 µg) were separated by 7.5% SDS-PAGE, and the membrane was blotted with Swine Influenza A virus G4 EA H1N1 HA (Hemagglutinin) antibody [HL1343] (GTX636763) diluted at 1:5000. The HRP-conjugated anti-rabbit IgG antibody (GTX213110-01) was used to detect the primary antibody.



GTX636763 IHC-P (cell pellet) Image

Swine Influenza A virus G4 EA H1N1 HA (Hemagglutinin) antibody [HL1343] detects Influenza A virus HA (A/swine/Henan/SN10/2018) protein at cytoplasm by immunohistochemical analysis.
 Sample: Paraffin-embedded mock and Influenza A virus HA (A/swine/Henan/SN10/2018) transfected 293T cell FFPE Cell Pellet Block.
 Green: Influenza A virus HA (A/swine/Henan/SN10/2018) stained by Swine Influenza A virus G4 EA H1N1 HA (Hemagglutinin) antibody [HL1343] (GTX636763) diluted at 1:1000.
 Antigen Retrieval: Citrate buffer, pH 6.0, 15 min



GTX636763 ICC/IF Image

Swine Influenza A virus G4 EA H1N1 HA (Hemagglutinin) antibody [HL1343] detects Swine Influenza A virus G4 EA H1N1 HA (Hemagglutinin) protein by immunofluorescent analysis.
 Sample: Mock and transfected 293T cells were fixed in 4% paraformaldehyde at RT for 15 min.
 Green: Swine Influenza A virus G4 EA H1N1 HA (Hemagglutinin) stained by Swine Influenza A virus G4 EA H1N1 HA (Hemagglutinin) antibody [HL1343] (GTX636763) diluted at 1:500.
 Blue: Fluoroshield with DAPI (GTX30920).



For full product information, images and publications, please visit our [website](#).