



SZABO SCANDIC

Part of Europa Biosite

Produktinformation



Forschungsprodukte & Biochemikalien



Zellkultur & Verbrauchsmaterial



Diagnostik & molekulare Diagnostik



Laborgeräte & Service

Weitere Information auf den folgenden Seiten!
See the following pages for more information!



Lieferung & Zahlungsart

siehe unsere [Liefer- und Versandbedingungen](#)

Zuschläge

- Mindermengenzuschlag
- Trockeneiszuschlag
- Gefahrgutzuschlag
- Expressversand

SZABO-SCANDIC HandelsgmbH

Quellenstraße 110, A-1100 Wien

T. +43(0)1 489 3961-0

F. +43(0)1 489 3961-7

mail@szabo-scandic.com

www.szabo-scandic.com

[linkedin.com/company/szaboscandic](https://www.linkedin.com/company/szaboscandic) 

Insulin antibody [HL1393]

Cat No. GTX636833

Host	Rabbit
Clonality	Monoclonal
Isotype	IgG
Application	IHC-P
Reactivity	Human, Mouse, Rat

Package
100 µl, 25 µl

APPLICATION

Application Note

*Optimal dilutions/concentrations should be determined by the researcher.

Suggested dilution	Dilution
IHC-P	1:100-1:5000

Not tested in other applications.

Calculated MW 12 kDa. ([Note](#))

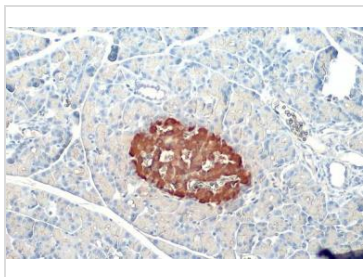
PROPERTIES

Form	Liquid
Buffer	PBS
Preservative	No Preservative
Storage	Store as concentrated solution. Centrifuge briefly prior to opening vial. For short-term storage (1-2 weeks), store at 4°C. For long-term storage, aliquot and store at -20°C or below. Avoid multiple freeze-thaw cycles.
Concentration	1 mg/ml (Please refer to the vial label for the specific concentration.)
Immunogen	Carrier-protein conjugated synthetic peptide encompassing a sequence within the N-terminus region of human insulin. The exact sequence is proprietary.
Purification	Affinity purified by Protein A.
Conjugation	Unconjugated
Note	For laboratory use only. Not for any clinical, therapeutic, or diagnostic use in humans or animals. Not for animal or human consumption.



For full product information, images and publications, please visit our [website](#).

DATA IMAGES

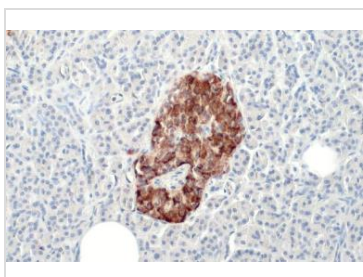
**GTX636833 IHC-P Image**

Insulin antibody [HL1393] detects secreted Insulin protein by immunohistochemical analysis.

Sample: Paraffin-embedded rat pancreas.

Insulin stained by Insulin antibody [HL1393] (GTX636833) diluted at 1:5000.

Antigen Retrieval: Citrate buffer, pH 6.0, 15 min

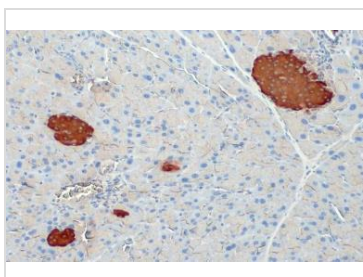
**GTX636833 IHC-P Image**

Insulin antibody [HL1393] detects secreted Insulin protein by immunohistochemical analysis.

Sample: Paraffin-embedded human pancreas.

Insulin stained by Insulin antibody [HL1393] (GTX636833) diluted at 1:5000.

Antigen Retrieval: Citrate buffer, pH 6.0, 15 min

**GTX636833 IHC-P Image**

Insulin antibody [HL1393] detects secreted Insulin protein by immunohistochemical analysis.

Sample: Paraffin-embedded mouse pancreas.

Insulin stained by Insulin antibody [HL1393] (GTX636833) diluted at 1:5000.

Antigen Retrieval: Citrate buffer, pH 6.0, 15 min



For full product information, images and publications, please visit our [website](#).