



SZABO SCANDIC

Part of Europa Biosite

Produktinformation



Forschungsprodukte & Biochemikalien



Zellkultur & Verbrauchsmaterial



Diagnostik & molekulare Diagnostik



Laborgeräte & Service

Weitere Information auf den folgenden Seiten!
See the following pages for more information!



Lieferung & Zahlungsart

siehe unsere [Liefer- und Versandbedingungen](#)

Zuschläge

- Mindermengenzuschlag
- Trockeneiszuschlag
- Gefahrgutzuschlag
- Expressversand

SZABO-SCANDIC HandelsgmbH

Quellenstraße 110, A-1100 Wien

T. +43(0)1 489 3961-0

F. +43(0)1 489 3961-7

mail@szabo-scandic.com

www.szabo-scandic.com

[linkedin.com/company/szaboscandic](https://www.linkedin.com/company/szaboscandic) 

Fibrinogen gamma antibody [HL1395]

Cat No. GTX636835

Host	Rabbit
Clonality	Monoclonal
Isotype	IgG
Application	WB, ICC/IF, IHC-P
Reactivity	Human, Mouse, Rat

Package
100 µl, 25 µl

APPLICATION

Application Note

*Optimal dilutions/concentrations should be determined by the researcher.

Suggested dilution	Dilution
WB	1:500-1:100000
ICC/IF	Assay dependent
IHC-P	Assay dependent

Not tested in other applications.

Calculated MW 52 kDa. ([Note](#))

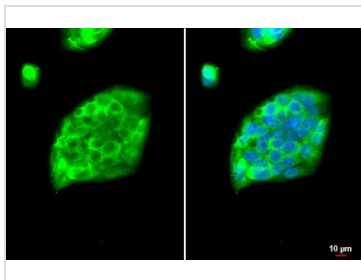
PROPERTIES

Form	Liquid
Buffer	PBS
Preservative	No Preservative
Storage	Store as concentrated solution. Centrifuge briefly prior to opening vial. For short-term storage (1-2 weeks), store at 4°C. For long-term storage, aliquot and store at -20°C or below. Avoid multiple freeze-thaw cycles.
Concentration	0.1 mg/ml (Please refer to the vial label for the specific concentration.)
Immunogen	Recombinant protein encompassing a sequence within the center region of human Fibrinogen gamma. The exact sequence is proprietary.
Purification	Affinity purified by Protein A.
Conjugation	Unconjugated
Note	For laboratory use only. Not for any clinical, therapeutic, or diagnostic use in humans or animals. Not for animal or human consumption.



For full product information, images and publications, please visit our [website](#).

DATA IMAGES



GTX636835 ICC/IF Image

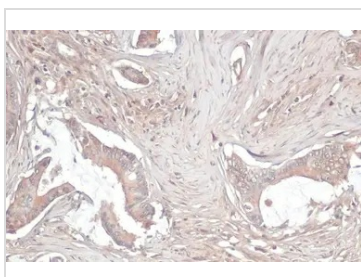
Fibrinogen gamma antibody [HL1395] detects Fibrinogen gamma protein at cytoplasm by immunofluorescent analysis.

Sample: HepG2 cells were fixed in 4% paraformaldehyde at RT for 15 min.

Green: Fibrinogen gamma stained by Fibrinogen gamma antibody [HL1395] (GTX636835) diluted at 1:50.

Blue: Fluoroshield with DAPI (GTX30920).

Scale bar= 10µm.



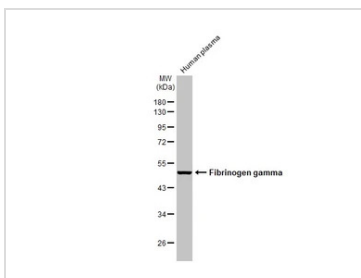
GTX636835 IHC-P Image

Fibrinogen gamma antibody [HL1395] detects secreted Fibrinogen gamma protein by immunohistochemical analysis.

Sample: Paraffin-embedded human colon cancer.

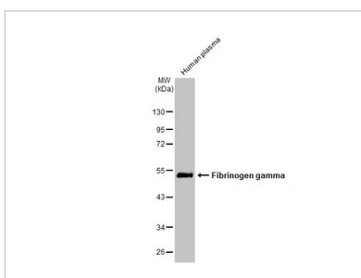
Fibrinogen gamma stained by Fibrinogen gamma antibody [HL1395] (GTX636835) diluted at 1:100.

Antigen Retrieval: Citrate buffer, pH 6.0, 15 min



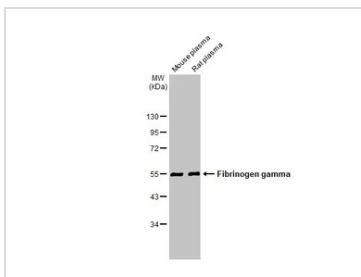
GTX636835 WB Image

Human plasma (30 µg) was separated by 10% SDS-PAGE, and the membrane was blotted with Fibrinogen gamma antibody [HL1395] (GTX636835) diluted at 1:100000. The HRP-conjugated anti-rabbit IgG antibody (GTX213110-01) was used to detect the primary antibody.



GTX636835 WB Image

Human plasma (30 µg) was separated by 10% SDS-PAGE, and the membrane was blotted with Fibrinogen gamma antibody [HL1395] (GTX636835) diluted at 1:100000. The HRP-conjugated anti-rabbit IgG antibody (GTX213110-01) was used to detect the primary antibody.



GTX636835 WB Image

Mouse plasma and rat plasma (50 µg) were separated by 10% SDS-PAGE, and the membrane was blotted with Fibrinogen gamma antibody [HL1395] (GTX636835) diluted at 1:20000. The HRP-conjugated anti-rabbit IgG antibody (GTX213110-01) was used to detect the primary antibody.



For full product information, images and publications, please visit our [website](#).