



SZABO SCANDIC

Part of Europa Biosite

Produktinformation



Forschungsprodukte & Biochemikalien



Zellkultur & Verbrauchsmaterial



Diagnostik & molekulare Diagnostik



Laborgeräte & Service

Weitere Information auf den folgenden Seiten!
See the following pages for more information!



Lieferung & Zahlungsart

siehe unsere [Liefer- und Versandbedingungen](#)

Zuschläge

- Mindermengenzuschlag
- Trockeneiszuschlag
- Gefahrgutzuschlag
- Expressversand

SZABO-SCANDIC HandelsgmbH

Quellenstraße 110, A-1100 Wien

T. +43(0)1 489 3961-0

F. +43(0)1 489 3961-7

mail@szabo-scandic.com

www.szabo-scandic.com

[linkedin.com/company/szaboscandic](https://www.linkedin.com/company/szaboscandic) 

Histone H3K18ac (Acetyl Lys18) antibody [HL1463]

Cat. No. GTX636937

Host	Rabbit
Clonality	Monoclonal
Isotype	IgG
Application	WB, ICC/IF, IHC-P, Dot
Reactivity	Human, Mouse, Rat

Package
100 µl, 25 µl

APPLICATION

Application Note

*Optimal dilutions/concentrations should be determined by the researcher.

Suggested dilution	Recommended dilution
WB	1:500-1:3000
ICC/IF	Assay dependent
IHC-P	1:100-1:1000
Dot	Assay dependent

Not tested in other applications.

Calculated MW 15 kDa. ([Note](#))

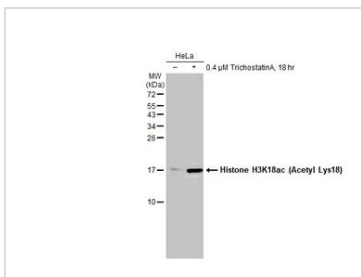
PROPERTIES

Form	Liquid
Buffer	PBS
Preservative	No Preservative
Storage	Store as concentrated solution. Centrifuge briefly prior to opening vial. For short-term storage (1-2 weeks), store at 4°C. For long-term storage, aliquot and store at -20°C or below. Avoid multiple freeze-thaw cycles.
Concentration	1 mg/ml (Please refer to the vial label for the specific concentration.)
Immunogen	Carrier-protein conjugated synthetic peptide surrounding acetyl Lys18 of human Histone H3. The exact sequence is proprietary.
Purification	Affinity purified by Protein A.
Conjugation	Unconjugated
Note	For laboratory use only. Not for any clinical, therapeutic, or diagnostic use in humans or animals. Not for animal or human consumption.



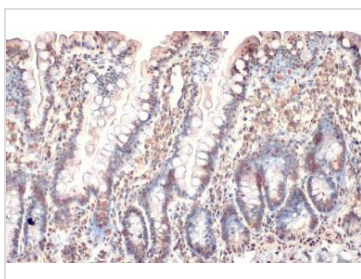
For full product information, images and publications, please visit our [website](#).

DATA IMAGES



GTX636937 WB Image

Untreated (-) and treated (+) HeLa whole cell extracts (30 μg) were separated by 15% SDS-PAGE, and the membrane was blotted with Histone H3K18ac (Acetyl Lys18) antibody [HL1463] (GTX636937) diluted at 1:5000. The HRP-conjugated anti-rabbit IgG antibody (GTX213110-01) was used to detect the primary antibody.



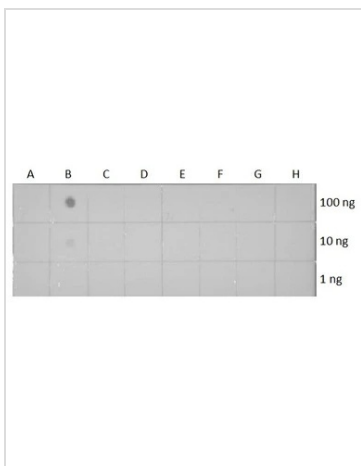
GTX636937 IHC-P Image

Histone H3K18ac (Acetyl Lys18) antibody [HL1463] detects Histone H3K18ac (Acetyl Lys18) protein at nucleus by immunohistochemical analysis.

Sample: Paraffin-embedded rat colon.

Histone H3K18ac (Acetyl Lys18) stained by Histone H3K18ac (Acetyl Lys18) antibody [HL1463] (GTX636937) diluted at 1:100.

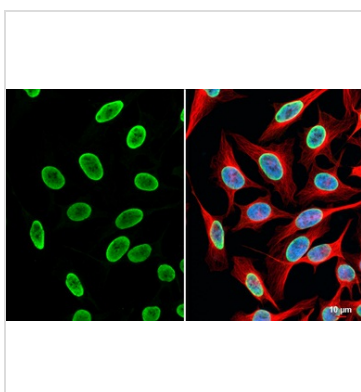
Antigen Retrieval: Citrate buffer, pH 6.0, 15 min



GTX636937 Dot Image

Dotblot analysis of anti-Histone H3K18ac (Acetyl Lys18) antibody with peptide samples. Varied amount of peptide samples were spotted onto positively charged nylon membrane and blotted with Histone H3K18ac (Acetyl Lys18) antibody (GTX636937) 1:5000 dilution.

- A: Peptide samples of H3K18 un
- B: Peptide samples of H3K18ac
- C: Peptide samples of H3K9un
- D: Peptide samples of H3K9ac
- E: Peptide samples of H3K14un
- F: Peptide samples of H3K14ac
- G: Peptide samples of H3K27un
- H: Peptide samples of H3K27ac



GTX636937 ICC/IF Image

Histone H3K18ac (Acetyl Lys18) antibody [HL1463] detects Histone H3K18ac (Acetyl Lys18) protein by immunofluorescent analysis.

Sample: HeLa cells were fixed in 4% paraformaldehyde at RT for 15 min.

Green: Histone H3K18ac (Acetyl Lys18) stained by Histone H3K18ac (Acetyl Lys18) antibody [HL1463] (GTX636937) diluted at 1:500.

Red: alpha Tubulin, a cytoskeleton marker, stained by alpha Tubulin antibody [GT114] (GTX628802) diluted at 1:1000.

Blue: Fluoroshield with DAPI (GTX30920).

Scale bar= 10μm.



For full product information, images and publications, please visit our [website](#).