



SZABO SCANDIC

Part of Europa Biosite

Produktinformation



Forschungsprodukte & Biochemikalien



Zellkultur & Verbrauchsmaterial



Diagnostik & molekulare Diagnostik



Laborgeräte & Service

Weitere Information auf den folgenden Seiten!
See the following pages for more information!



Lieferung & Zahlungsart

siehe unsere [Liefer- und Versandbedingungen](#)

Zuschläge

- Mindermengenzuschlag
- Trockeneiszuschlag
- Gefahrgutzuschlag
- Expressversand

SZABO-SCANDIC HandelsgmbH

Quellenstraße 110, A-1100 Wien

T. +43(0)1 489 3961-0

F. +43(0)1 489 3961-7

mail@szabo-scandic.com

www.szabo-scandic.com

[linkedin.com/company/szaboscandic](https://www.linkedin.com/company/szaboscandic) 

mCherry antibody [HL1482]

Cat. No. GTX636956

Host	Rabbit
Clonality	Monoclonal
Isotype	IgG
Application	WB, ICC/IF, IHC-P (cell pellet)

Package
100 µl, 25 µl

APPLICATION

Application Note

*Optimal dilutions/concentrations should be determined by the researcher.

Suggested dilution	Recommended dilution
WB	1:1000-1:10000
ICC/IF	Assay dependent
IHC-P (cell pellet)	Assay dependent

Not tested in other applications.

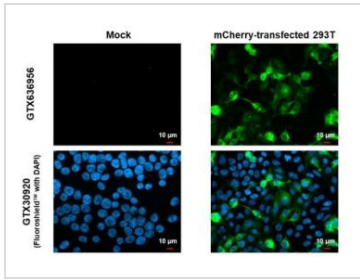
PROPERTIES

Form	Liquid
Buffer	PBS
Preservative	No Preservative
Storage	Store as concentrated solution. Centrifuge briefly prior to opening vial. For short-term storage (1-2 weeks), store at 4°C. For long-term storage, aliquot and store at -20°C or below. Avoid multiple freeze-thaw cycles.
Concentration	2 mg/ml (Please refer to the vial label for the specific concentration.)
Immunogen	Full length mCherry recombinant protein
Purification	Affinity purified by Protein A.
Conjugation	Unconjugated
Note	For laboratory use only. Not for any clinical, therapeutic, or diagnostic use in humans or animals. Not for animal or human consumption.



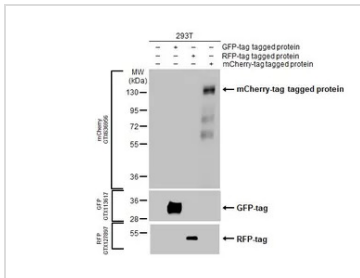
For full product information, images and publications, please visit our [website](#).

DATA IMAGES



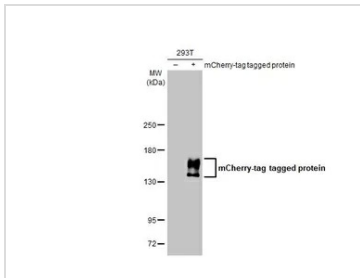
GTX636956 ICC/IF Image

mCherry antibody [HL1482] detects mCherry protein by immunofluorescent analysis.
 Sample: Mock and transfected 293T cells were fixed in 4% paraformaldehyde at RT for 15 min.
 Green: mCherry stained by mCherry antibody [HL1482] (GTX636956) diluted at 1:500.
 Blue: Fluoroshield with DAPI (GTX30920).



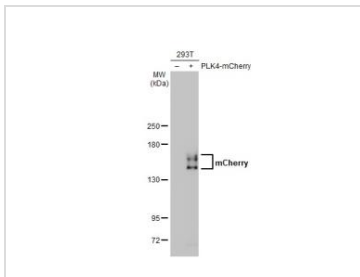
GTX636956 WB Image

Non-transfected (-) and transfected (+) 293T whole cell extracts (30 μg) were separated by gradient gel% SDS-PAGE, and the membrane was blotted with mCherry antibody [HL1482] (GTX636956) diluted at 1:10000. The HRP-conjugated anti-rabbit IgG antibody (GTX213110-01) was used to detect the primary antibody.



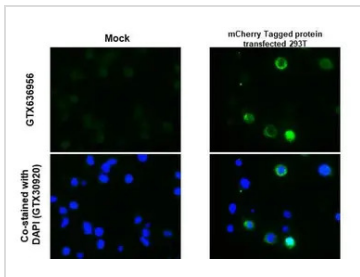
GTX636956 WB Image

Non-transfected (-) and transfected (+) 293T whole cell extracts (30 μg) were separated by 5% SDS-PAGE, and the membrane was blotted with mCherry antibody [HL1482] (GTX636956) diluted at 1:5000. The HRP-conjugated anti-FALSE was used to detect the primary antibody.



GTX636956 WB Image

Non-transfected (-) and transfected (+) 293T whole cell extracts (30 μg) were separated by 5% SDS-PAGE, and the membrane was blotted with mCherry antibody [HL1482] (GTX636956) diluted at 1:5000. The HRP-conjugated anti-rabbit IgG antibody (GTX213110-01) was used to detect the primary antibody.



GTX636956 IHC-P (cell pellet) Image

mCherry antibody [HL1482] detects mCherry protein at cytoplasm by immunohistochemical analysis.
 Sample: Paraffin-embedded mock and mCherry tagged protein transfected 293T cell pellet.
 Green: mCherry stained by mCherry antibody [HL1482] (GTX636956) diluted at 1:1000.
 Antigen Retrieval: Citrate buffer, pH 6.0, 15 min



For full product information, images and publications, please visit our [website](#).