



# SZABO SCANDIC

Part of Europa Biosite

## Produktinformation



Forschungsprodukte & Biochemikalien



Zellkultur & Verbrauchsmaterial



Diagnostik & molekulare Diagnostik



Laborgeräte & Service

Weitere Information auf den folgenden Seiten!  
See the following pages for more information!



### Lieferung & Zahlungsart

siehe unsere [Liefer- und Versandbedingungen](#)

### Zuschläge

- Mindermengenzuschlag
- Trockeneiszuschlag
- Gefahrgutzuschlag
- Expressversand

### SZABO-SCANDIC HandelsgmbH

Quellenstraße 110, A-1100 Wien

T. +43(0)1 489 3961-0

F. +43(0)1 489 3961-7

[mail@szabo-scandic.com](mailto:mail@szabo-scandic.com)

[www.szabo-scandic.com](http://www.szabo-scandic.com)

[linkedin.com/company/szaboscandic](https://www.linkedin.com/company/szaboscandic) 

## Cardiac Troponin I antibody [HL1489]

**Cat. No. GTX636963**

<b>Host</b>	Rabbit
<b>Clonality</b>	Monoclonal
<b>Isotype</b>	IgG
<b>Application</b>	WB, IHC-P
<b>Reactivity</b>	Human, Mouse, Rat

**Package**  
100 µl, 25 µl

## APPLICATION

**Application Note**

\*Optimal dilutions/concentrations should be determined by the researcher.

Suggested dilution	Recommended dilution
WB	1:1000-1:10000
IHC-P	Assay dependent

Not tested in other applications.

**Calculated MW** 24 kDa. ([Note](#))

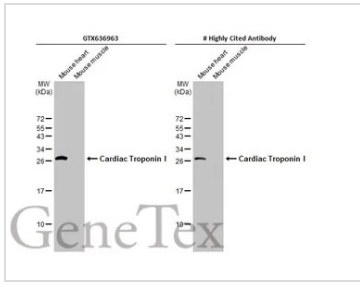
## PROPERTIES

<b>Form</b>	Liquid
<b>Buffer</b>	PBS
<b>Preservative</b>	No Preservative
<b>Storage</b>	Store as concentrated solution. Centrifuge briefly prior to opening vial. For short-term storage (1-2 weeks), store at 4°C. For long-term storage, aliquot and store at -20°C or below. Avoid multiple freeze-thaw cycles.
<b>Concentration</b>	1 mg/ml (Please refer to the vial label for the specific concentration.)
<b>Immunogen</b>	Full length human Cardiac Troponin I recombinant protein
<b>Purification</b>	Affinity purified by Protein A.
<b>Conjugation</b>	Unconjugated
<b>Note</b>	For laboratory use only. Not for any clinical, therapeutic, or diagnostic use in humans or animals. Not for animal or human consumption.



For full product information, images and publications, please visit our [website](#).

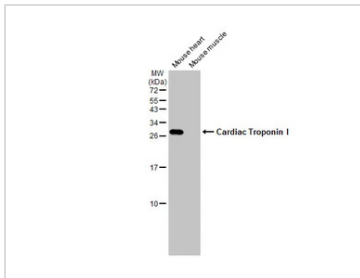
DATA IMAGES



**GTX636963 WB Image**

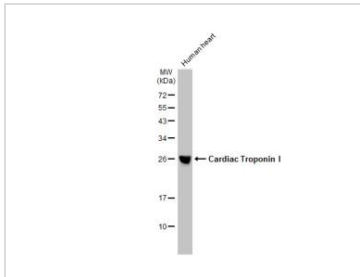
Various tissue extracts (50 µg) were separated by 15% SDS-PAGE, and the membranes were blotted with Cardiac Troponin I antibody [HL1489] (GTX636963) diluted at 1:10000 and competitor's antibody (# Highly Cited Antibody) diluted at 1:3000. The HRP-conjugated anti-rabbit IgG antibody (GTX213110-01) was used to detect the primary antibody.

\*The competitor is not affiliated with GeneTex and does not endorse this product.



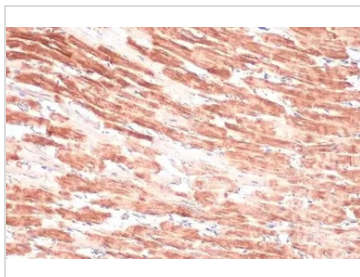
**GTX636963 WB Image**

Various tissue extracts (50 µg) were separated by 15% SDS-PAGE, and the membrane was blotted with Cardiac Troponin I antibody [HL1489] (GTX636963) diluted at 1:10000. The HRP-conjugated anti-rabbit IgG antibody (GTX213110-01) was used to detect the primary antibody.



**GTX636963 WB Image**

Human tissue extract (50 µg) was separated by 12% SDS-PAGE, and the membrane was blotted with Cardiac Troponin I antibody [HL1489] (GTX636963) diluted at 1:10000. The HRP-conjugated anti-rabbit IgG antibody (GTX213110-01) was used to detect the primary antibody.



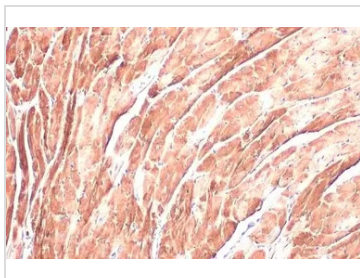
**GTX636963 IHC-P Image**

Cardiac Troponin I antibody [HL1489] detects Cardiac Troponin I protein at cytoplasm by immunohistochemical analysis.

Sample: Paraffin-embedded rat heart.

Cardiac Troponin I stained by Cardiac Troponin I antibody [HL1489] (GTX636963) diluted at 1:100.

Antigen Retrieval: Citrate buffer, pH 6.0, 15 min



**GTX636963 IHC-P Image**

Cardiac Troponin I antibody [HL1489] detects Cardiac Troponin I protein at cytoplasm by immunohistochemical analysis.

Sample: Paraffin-embedded mouse heart.

Cardiac Troponin I stained by Cardiac Troponin I antibody [HL1489] (GTX636963) diluted at 1:100.

Antigen Retrieval: Citrate buffer, pH 6.0, 15 min



For full product information, images and publications, please visit our [website](#).