



# SZABO SCANDIC

Part of Europa Biosite

## Produktinformation



Forschungsprodukte & Biochemikalien



Zellkultur & Verbrauchsmaterial



Diagnostik & molekulare Diagnostik



Laborgeräte & Service

Weitere Information auf den folgenden Seiten!  
See the following pages for more information!



### Lieferung & Zahlungsart

siehe unsere [Liefer- und Versandbedingungen](#)

### Zuschläge

- Mindermengenzuschlag
- Trockeneiszuschlag
- Gefahrgutzuschlag
- Expressversand

### SZABO-SCANDIC HandelsgmbH

Quellenstraße 110, A-1100 Wien

T. +43(0)1 489 3961-0

F. +43(0)1 489 3961-7

[mail@szabo-scandic.com](mailto:mail@szabo-scandic.com)

[www.szabo-scandic.com](http://www.szabo-scandic.com)

[linkedin.com/company/szaboscandic](https://www.linkedin.com/company/szaboscandic) 

## FABP4 antibody [HL1521]

Cat. No. GTX636995

Host	Rabbit
Clonality	Monoclonal
Isotype	IgG
Application	WB, ICC/IF, IHC-P
Reactivity	Human, Mouse, Rat

Package  
100 µl, 25 µl

## APPLICATION

## Application Note

\*Optimal dilutions/concentrations should be determined by the researcher.

Suggested dilution	Recommended dilution
WB	1:1000-1:10000
ICC/IF	Assay dependent
IHC-P	Assay dependent

Not tested in other applications.

Calculated MW 15 kDa. ([Note](#))

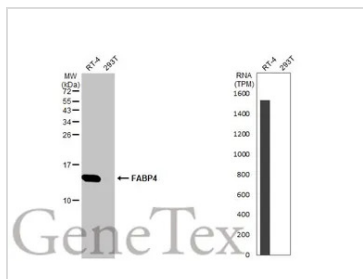
## PROPERTIES

Form	Liquid
Buffer	PBS
Preservative	No Preservative
Storage	Store as concentrated solution. Centrifuge briefly prior to opening vial. For short-term storage (1-2 weeks), store at 4°C. For long-term storage, aliquot and store at -20°C or below. Avoid multiple freeze-thaw cycles.
Concentration	1 mg/ml (Please refer to the vial label for the specific concentration.)
Immunogen	Carrier-protein conjugated synthetic peptide encompassing a sequence within the center region of human FABP4. The exact sequence is proprietary.
Purification	Affinity purified by Protein A.
Conjugation	Unconjugated
Note	For laboratory use only. Not for any clinical, therapeutic, or diagnostic use in humans or animals. Not for animal or human consumption.



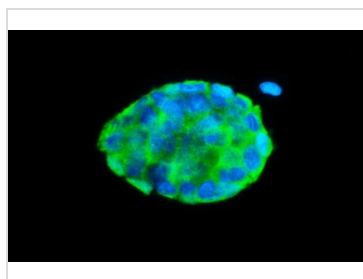
For full product information, images and publications, please visit our [website](#).

DATA IMAGES



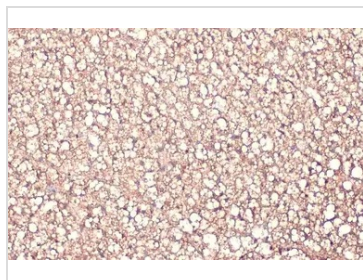
**GTX636995 WB Image**

Various whole cell extracts (30 µg) were separated by 15% SDS-PAGE, and the membrane was blotted with FABP4 antibody [HL1521] (GTX636995) diluted at 1:10000. The HRP-conjugated anti-rabbit IgG antibody (GTX213110-01) was used to detect the primary antibody. Corresponding RNA expression data for the same cell lines are based on Human Protein Atlas program.



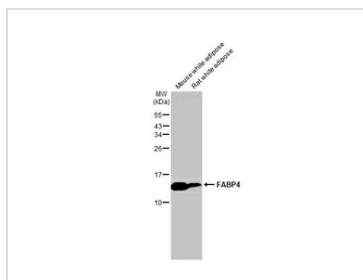
**GTX636995 ICC/IF Image**

FABP4 antibody [HL1521] detects FABP4 protein at cytoplasm by immunofluorescent analysis. Sample: RT-4 cells were fixed in 4% paraformaldehyde at RT for 15 min. Green: FABP4 stained by FABP4 antibody [HL1521] (GTX636995) diluted at 1:500. Blue: Fluoroshield with DAPI (GTX30920).



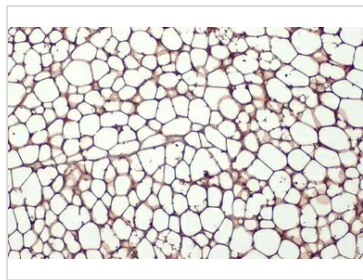
**GTX636995 IHC-P Image**

FABP4 antibody [HL1521] detects FABP4 protein at cytoplasm by immunohistochemical analysis. Sample: Paraffin-embedded mouse brown adipocyte. FABP4 stained by FABP4 antibody [HL1521] (GTX636995) diluted at 1:100. Antigen Retrieval: Citrate buffer, pH 6.0, 15 min



**GTX636995 WB Image**

Various tissue extracts (50 µg) were separated by 15% SDS-PAGE, and the membrane was blotted with FABP4 antibody [HL1521] (GTX636995) diluted at 1:5000. The HRP-conjugated anti-rabbit IgG antibody (GTX213110-01) was used to detect the primary antibody.



**GTX636995 IHC-P Image**

FABP4 antibody [HL1521] detects FABP4 protein at cytoplasm by immunohistochemical analysis. Sample: Paraffin-embedded mouse white adipocyte. FABP4 stained by FABP4 antibody [HL1521] (GTX636995) diluted at 1:100. Antigen Retrieval: Citrate buffer, pH 6.0, 15 min



For full product information, images and publications, please visit our [website](#).