



SZABO SCANDIC

Part of Europa Biosite

Produktinformation



Forschungsprodukte & Biochemikalien



Zellkultur & Verbrauchsmaterial



Diagnostik & molekulare Diagnostik



Laborgeräte & Service

Weitere Information auf den folgenden Seiten!
See the following pages for more information!



Lieferung & Zahlungsart

siehe unsere [Liefer- und Versandbedingungen](#)

Zuschläge

- Mindermengenzuschlag
- Trockeneiszuschlag
- Gefahrgutzuschlag
- Expressversand

SZABO-SCANDIC HandelsgmbH

Quellenstraße 110, A-1100 Wien

T. +43(0)1 489 3961-0

F. +43(0)1 489 3961-7

mail@szabo-scandic.com

www.szabo-scandic.com

[linkedin.com/company/szaboscandic](https://www.linkedin.com/company/szaboscandic) 

EpCAM antibody [HL1524]

Cat. No. GTX636998

Host	Rabbit
Clonality	Monoclonal
Isotype	IgG
Application	WB, ICC/IF, IHC-P, FACS
Reactivity	Human, Mouse

Package
100 µl, 25 µl

APPLICATION

Application Note

*Optimal dilutions/concentrations should be determined by the researcher.

Suggested dilution	Recommended dilution
WB	1:500-1:3000
ICC/IF	Assay dependent
IHC-P	Assay dependent
FACS	Assay dependent

Not tested in other applications.

Calculated MW 35 kDa. ([Note](#))

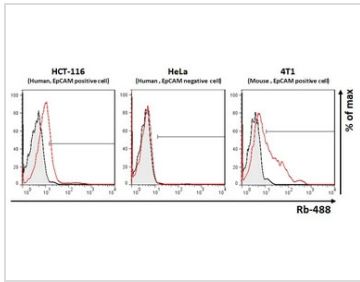
PROPERTIES

Form	Liquid
Buffer	PBS
Preservative	No Preservative
Storage	Store as concentrated solution. Centrifuge briefly prior to opening vial. For short-term storage (1-2 weeks), store at 4°C. For long-term storage, aliquot and store at -20°C or below. Avoid multiple freeze-thaw cycles.
Concentration	1 mg/ml (Please refer to the vial label for the specific concentration.)
Immunogen	Recombinant protein encompassing a sequence within the center region of human EpCAM. The exact sequence is proprietary.
Purification	Affinity purified by Protein A.
Conjugation	Unconjugated
Note	For laboratory use only. Not for any clinical, therapeutic, or diagnostic use in humans or animals. Not for animal or human consumption.



For full product information, images and publications, please visit our [website](#).

DATA IMAGES

**GTX636998 FACS Image**

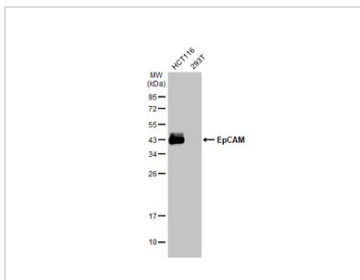
EpCAM antibody [HL1524] (GTX636998) detects EpCAM protein by flow cytometry analysis.

Sample: HCT-116, HeLa and 4T1 cell.

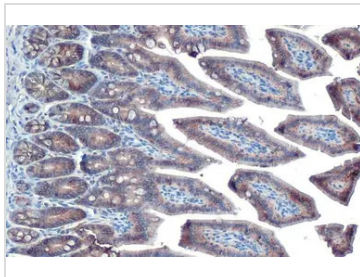
Gray: Rabbit IgG Isotype control.

Red: EpCAM antibody [HL1524] (GTX636998) dilution: 1:50.

Acquisition of 50,000 (HCT-116 and HeLa cell) and 100,000 (4T1 cell) events were collected for flow cytometry analysis.

**GTX636998 WB Image**

Various whole cell extracts (30 µg) were separated by 12% SDS-PAGE, and the membrane was blotted with EpCAM antibody [HL1524] (GTX636998) diluted at 1:3000. The HRP-conjugated anti-rabbit IgG antibody (GTX213110-01) was used to detect the primary antibody.

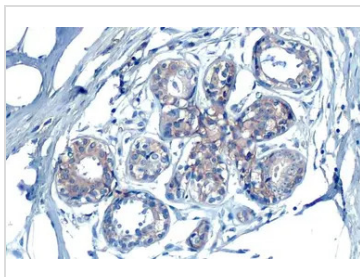
**GTX636998 IHC-P Image**

EpCAM antibody [HL1524] detects EpCAM protein at cell membrane by immunohistochemical analysis.

Sample: Paraffin-embedded mouse intestine.

EpCAM stained by EpCAM antibody [HL1524] (GTX636998) diluted at 1:100.

Antigen Retrieval: Citrate buffer, pH 6.0, 15 min

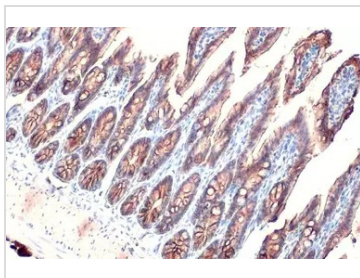
**GTX636998 IHC-P Image**

EpCAM antibody [HL1524] detects EpCAM protein at cell membrane by immunohistochemical analysis.

Sample: Paraffin-embedded human breast carcinoma.

EpCAM stained by EpCAM antibody [HL1524] (GTX636998) diluted at 1:100.

Antigen Retrieval: Citrate buffer, pH 6.0, 15 min

**GTX636998 IHC-P Image**

EpCAM antibody [HL1524] detects EpCAM protein at cell membrane by immunohistochemical analysis.

Sample: Paraffin-embedded mouse intestine.

EpCAM stained by EpCAM antibody [HL1524] (GTX636998) diluted at 1:100.

Antigen Retrieval: Citrate buffer, pH 6.0, 15 min



For full product information, images and publications, please visit our [website](https://www.genetex.com).