



SZABO SCANDIC

Part of Europa Biosite

Produktinformation



Forschungsprodukte & Biochemikalien



Zellkultur & Verbrauchsmaterial



Diagnostik & molekulare Diagnostik



Laborgeräte & Service

Weitere Information auf den folgenden Seiten!
See the following pages for more information!



Lieferung & Zahlungsart

siehe unsere [Liefer- und Versandbedingungen](#)

Zuschläge

- Mindermengenzuschlag
- Trockeneiszuschlag
- Gefahrgutzuschlag
- Expressversand

SZABO-SCANDIC HandelsgmbH

Quellenstraße 110, A-1100 Wien

T. +43(0)1 489 3961-0

F. +43(0)1 489 3961-7

mail@szabo-scandic.com

www.szabo-scandic.com

[linkedin.com/company/szaboscandic](https://www.linkedin.com/company/szaboscandic) 

Dopamine Receptor D2 antibody [HL1584]

Cat. No. GTX637063

Host	Rabbit
Clonality	Monoclonal
Isotype	IgG
Application	WB, ICC/IF, IHC-P
Reactivity	Human, Mouse, Rat

Package
100 µl, 25 µl

APPLICATION

Application Note

*Optimal dilutions/concentrations should be determined by the researcher.

Suggested dilution	Recommended dilution
WB	1:500-1:3000
ICC/IF	Assay dependent
IHC-P	1:100-1:1000

Not tested in other applications.

Calculated MW 51 kDa. ([Note](#))

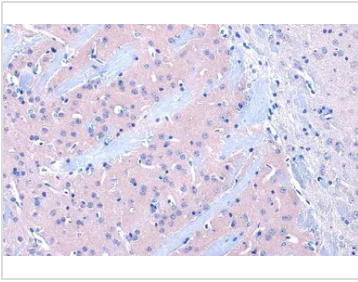
PROPERTIES

Form	Liquid
Buffer	PBS
Preservative	No Preservative
Storage	Store as concentrated solution. Centrifuge briefly prior to opening vial. For short-term storage (1-2 weeks), store at 4°C. For long-term storage, aliquot and store at -20°C or below. Avoid multiple freeze-thaw cycles.
Concentration	1 mg/ml (Please refer to the vial label for the specific concentration.)
Immunogen	Recombinant protein encompassing a sequence within the N-terminus region of human Dopamine Receptor D2. The exact sequence is proprietary.
Purification	Affinity purified by Protein A.
Conjugation	Unconjugated
Note	For laboratory use only. Not for any clinical, therapeutic, or diagnostic use in humans or animals. Not for animal or human consumption.



For full product information, images and publications, please visit our [website](#).

DATA IMAGES

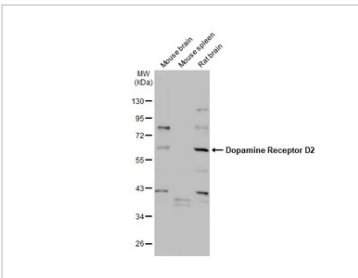
**GTX637063 IHC-P Image**

Dopamine Receptor D2 antibody [HL1584] detects Dopamine Receptor D2 protein at cytoplasm by immunohistochemical analysis.

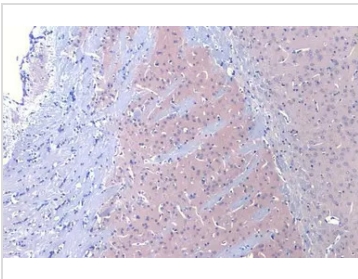
Sample: Paraffin-embedded mouse brain.

Dopamine Receptor D2 stained by Dopamine Receptor D2 antibody [HL1584] (GTX637063) diluted at 1:100.

Antigen Retrieval: Citrate buffer, pH 6.0, 15 min

**GTX637063 WB Image**

Various tissue extracts (50 µg) were separated by 10% SDS-PAGE, and the membrane was blotted with Dopamine Receptor D2 antibody [HL1584] (GTX637063) diluted at 1:1000. The HRP-conjugated anti-rabbit IgG antibody (GTX213110-01) was used to detect the primary antibody.

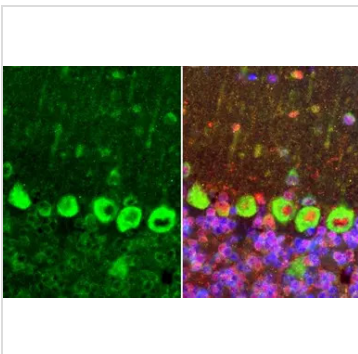
**GTX637063 IHC-P Image**

Dopamine Receptor D2 antibody [HL1584] detects Dopamine Receptor D2 protein at cytoplasm by immunohistochemical analysis.

Sample: Paraffin-embedded mouse brain.

Dopamine Receptor D2 stained by Dopamine Receptor D2 antibody [HL1584] (GTX637063) diluted at 1:100.

Antigen Retrieval: Citrate buffer, pH 6.0, 15 min

**GTX637063 IHC-P Image**

Dopamine Receptor D2 antibody [HL1584] detects Dopamine Receptor D2 protein at cytoplasm by immunohistochemical analysis.

Sample: Paraffin-embedded rat cerebellum.

Green: Dopamine Receptor D2 stained by Dopamine Receptor D2 antibody [HL1584] (GTX637063) diluted at 1:100.

Red: MAP2, a neural marker, stained by MAP2 antibody [GT925] (GTX634473) diluted at 1:250.

Blue: Fluoroshield with DAPI (GTX30920).

Antigen Retrieval: Citrate buffer, pH 6.0, 15 min



For full product information, images and publications, please visit our [website](#).