



# SZABO SCANDIC

Part of Europa Biosite

## Produktinformation



Forschungsprodukte & Biochemikalien



Zellkultur & Verbrauchsmaterial



Diagnostik & molekulare Diagnostik



Laborgeräte & Service

Weitere Information auf den folgenden Seiten!  
See the following pages for more information!



### Lieferung & Zahlungsart

siehe unsere [Liefer- und Versandbedingungen](#)

### Zuschläge

- Mindermengenzuschlag
- Trockeneiszuschlag
- Gefahrgutzuschlag
- Expressversand

### SZABO-SCANDIC HandelsgmbH

Quellenstraße 110, A-1100 Wien

T. +43(0)1 489 3961-0

F. +43(0)1 489 3961-7

[mail@szabo-scandic.com](mailto:mail@szabo-scandic.com)

[www.szabo-scandic.com](http://www.szabo-scandic.com)

[linkedin.com/company/szaboscandic](https://www.linkedin.com/company/szaboscandic) 

## SOD1 antibody [HL1652]

Cat. No. GTX637250

|                    |                        |
|--------------------|------------------------|
| <b>Host</b>        | Rabbit                 |
| <b>Clonality</b>   | Monoclonal             |
| <b>Isotype</b>     | IgG                    |
| <b>Application</b> | WB, ICC/IF, IHC-P      |
| <b>Reactivity</b>  | Human, Mouse, Rat, Dog |

Package  
100 µl, 25 µl

## APPLICATION

## Application Note

\*Optimal dilutions/concentrations should be determined by the researcher.

| Suggested dilution | Recommended dilution |
|--------------------|----------------------|
| WB                 | Assay dependent      |
| ICC/IF             | Assay dependent      |
| IHC-P              | 1:100-1:1000         |

Not tested in other applications.

**Calculated MW** 16 kDa. ([Note](#))

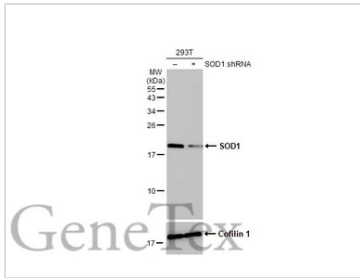
## PROPERTIES

|                      |  |
|----------------------|--|
| <b>Form</b>          | Liquid   |
| <b>Buffer</b>        | PBS  |
| <b>Preservative</b>  | No Preservative  |
| <b>Storage</b>       | Store as concentrated solution. Centrifuge briefly prior to opening vial. For short-term storage (1-2 weeks), store at 4°C. For long-term storage, aliquot and store at -20°C or below. Avoid multiple freeze-thaw cycles. |
| <b>Concentration</b> | 1 mg/ml (Please refer to the vial label for the specific concentration.)   |
| <b>Immunogen</b>     | Carrier-protein conjugated synthetic peptide encompassing a sequence within the center region of human SOD1. The exact sequence is proprietary.  |
| <b>Purification</b>  | Affinity purified by Protein A.  |
| <b>Conjugation</b>   | Unconjugated   |
| <b>Note</b>          | For laboratory use only. Not for any clinical, therapeutic, or diagnostic use in humans or animals. Not for animal or human consumption.   |

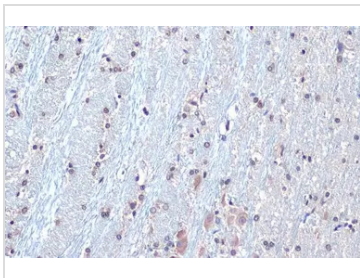


For full product information, images and publications, please visit our [website](#).

## DATA IMAGES

**GTX637250 WB Image**

Non-transfected (-) and transfected (+) 293T whole cell extracts (30 µg) were separated by 15% SDS-PAGE, and the membrane was blotted with SOD1 antibody [HL1652] (GTX637250) diluted at 1:1000. The HRP-conjugated anti-rabbit IgG antibody (GTX213110-01) was used to detect the primary antibody.

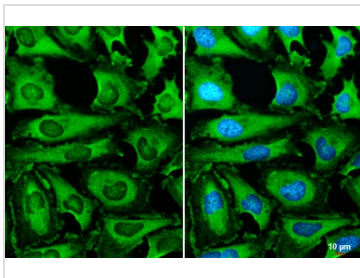
**GTX637250 IHC-P Image**

SOD1 antibody [HL1652] detects SOD1 protein at nucleus by immunohistochemical analysis.

Sample: Paraffin-embedded rat brain.

SOD1 stained by SOD1 antibody [HL1652] (GTX637250) diluted at 1:100.

Antigen Retrieval: Citrate buffer, pH 6.0, 15 min

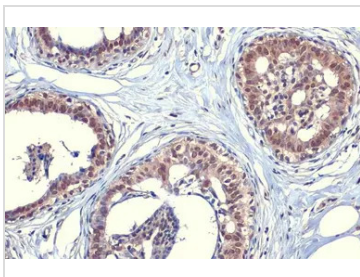
**GTX637250 ICC/IF Image**

SOD1 antibody [HL1652] detects SOD1 protein at cytoplasm by immunofluorescent analysis.

Sample: HeLa cells were fixed in 4% paraformaldehyde at RT for 15 min.

Green: SOD1 stained by SOD1 antibody [HL1652] (GTX637250) diluted at 1:500.

Blue: Fluoroshield with DAPI (GTX30920).

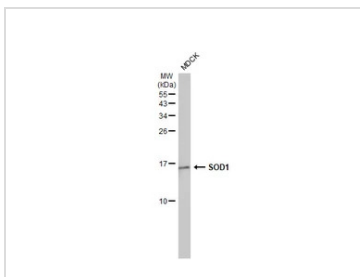
**GTX637250 IHC-P Image**

SOD1 antibody [HL1652] detects SOD1 protein at cytoplasm and nucleus by immunohistochemical analysis.

Sample: Paraffin-embedded human breast carcinoma.

SOD1 stained by SOD1 antibody [HL1652] (GTX637250) diluted at 1:100.

Antigen Retrieval: Citrate buffer, pH 6.0, 15 min

**GTX637250 WB Image**

Whole cell extract (30 µg) was separated by 15% SDS-PAGE, and the membrane was blotted with SOD1 antibody [HL1652] (GTX637250) diluted at 1:1000. The HRP-conjugated anti-rabbit IgG antibody (GTX213110-01) was used to detect the primary antibody.



For full product information, images and publications, please visit our [website](#).