



SZABO SCANDIC

Part of Europa Biosite

Produktinformation



Forschungsprodukte & Biochemikalien



Zellkultur & Verbrauchsmaterial



Diagnostik & molekulare Diagnostik



Laborgeräte & Service

Weitere Information auf den folgenden Seiten!
See the following pages for more information!



Lieferung & Zahlungsart

siehe unsere [Liefer- und Versandbedingungen](#)

Zuschläge

- Mindermengenzuschlag
- Trockeneiszuschlag
- Gefahrgutzuschlag
- Expressversand

SZABO-SCANDIC HandelsgmbH

Quellenstraße 110, A-1100 Wien

T. +43(0)1 489 3961-0

F. +43(0)1 489 3961-7

mail@szabo-scandic.com

www.szabo-scandic.com

[linkedin.com/company/szaboscandic](https://www.linkedin.com/company/szaboscandic) 

C1qA antibody [HL1695]

Cat. No. GTX637294

| | |
|-------------|-------------------|
| Host | Rabbit |
| Clonality | Monoclonal |
| Isotype | IgG |
| Application | WB |
| Reactivity | Human, Mouse, Rat |

Package
100 µl, 25 µl

APPLICATION

Application Note

*Optimal dilutions/concentrations should be determined by the researcher.

| Suggested dilution | Recommended dilution |
|--------------------|----------------------|
|--------------------|----------------------|

| | |
|----|--------------|
| WB | 1:500-1:3000 |
|----|--------------|

Not tested in other applications.

| | |
|---------------|----------------------------------|
| Calculated MW | 26 kDa. (Note) |
|---------------|----------------------------------|

PROPERTIES

| | |
|------|--------|
| Form | Liquid |
|------|--------|

| | |
|--------|-----|
| Buffer | PBS |
|--------|-----|

| | |
|--------------|-----------------|
| Preservative | No Preservative |
|--------------|-----------------|

| | |
|---------|--|
| Storage | Store as concentrated solution. Centrifuge briefly prior to opening vial. For short-term storage (1-2 weeks), store at 4°C. For long-term storage, aliquot and store at -20°C or below. Avoid multiple freeze-thaw cycles. |
|---------|--|

| | |
|---------------|--|
| Concentration | 1 mg/ml (Please refer to the vial label for the specific concentration.) |
|---------------|--|

| | |
|-----------|--|
| Immunogen | Recombinant protein encompassing a sequence within the center region of human C1qA. The exact sequence is proprietary. |
|-----------|--|

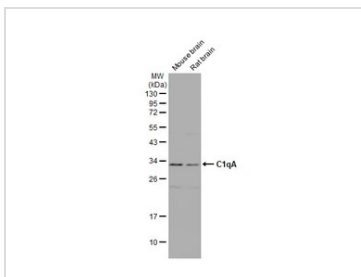
| | |
|--------------|---------------------------------|
| Purification | Affinity purified by Protein A. |
|--------------|---------------------------------|

| | |
|-------------|--------------|
| Conjugation | Unconjugated |
|-------------|--------------|

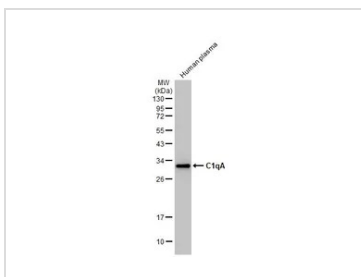
| | |
|------|--|
| Note | For laboratory use only. Not for any clinical, therapeutic, or diagnostic use in humans or animals. Not for animal or human consumption. |
|------|--|



For full product information, images and publications, please visit our [website](#).

DATA IMAGES

GTX637294 WB Image

Various tissue extracts (50 μ g) were separated by 12% SDS-PAGE, and the membrane was blotted with C1qA antibody [HL1695] (GTX637294) diluted at 1:1000. The HRP-conjugated anti-rabbit IgG antibody (GTX213110-01) was used to detect the primary antibody, and the signal was developed with Trident ECL plus-Enhanced.


GTX637294 WB Image

Human plasma (30 μ g) was separated by 12% SDS-PAGE, and the membrane was blotted with C1qA antibody [HL1695] (GTX637294) diluted at 1:1000. The HRP-conjugated anti-rabbit IgG antibody (GTX213110-01) was used to detect the primary antibody.



For full product information, images and publications, please visit our [website](#).