



# SZABO SCANDIC

Part of Europa Biosite

## Produktinformation



Forschungsprodukte & Biochemikalien



Zellkultur & Verbrauchsmaterial



Diagnostik & molekulare Diagnostik



Laborgeräte & Service

Weitere Information auf den folgenden Seiten!  
See the following pages for more information!



### Lieferung & Zahlungsart

siehe unsere [Liefer- und Versandbedingungen](#)

### Zuschläge

- Mindermengenzuschlag
- Trockeneiszuschlag
- Gefahrgutzuschlag
- Expressversand

### SZABO-SCANDIC HandelsgmbH

Quellenstraße 110, A-1100 Wien

T. +43(0)1 489 3961-0

F. +43(0)1 489 3961-7

[mail@szabo-scandic.com](mailto:mail@szabo-scandic.com)

[www.szabo-scandic.com](http://www.szabo-scandic.com)

[linkedin.com/company/szaboscandic](https://www.linkedin.com/company/szaboscandic) 

## Apolipoprotein A1 antibody [HL1713]

Cat. No. GTX637312

<b>Host</b>	Rabbit
<b>Clonality</b>	Monoclonal
<b>Isotype</b>	IgG
<b>Application</b>	WB, ICC/IF, ELISA
<b>Reactivity</b>	Human, Mouse, Rat

Package  
100 µl, 25 µl

## APPLICATION

## Application Note

\*Optimal dilutions/concentrations should be determined by the researcher.

Suggested dilution	Recommended dilution
WB	1:1000-1:10000
ICC/IF	Assay dependent
ELISA	Assay dependent

Not tested in other applications.

**Calculated MW** 31 kDa. ([Note](#))

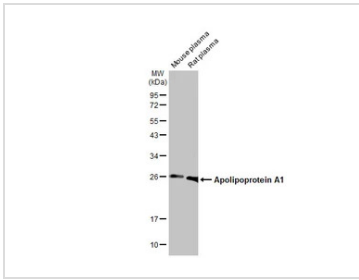
## PROPERTIES

<b>Form</b>	Liquid
<b>Buffer</b>	PBS
<b>Preservative</b>	No Preservative
<b>Storage</b>	Store as concentrated solution. Centrifuge briefly prior to opening vial. For short-term storage (1-2 weeks), store at 4°C. For long-term storage, aliquot and store at -20°C or below. Avoid multiple freeze-thaw cycles.
<b>Concentration</b>	1 mg/ml (Please refer to the vial label for the specific concentration.)
<b>Immunogen</b>	Full length human Apolipoprotein A1 recombinant protein.
<b>Purification</b>	Affinity purified by Protein A.
<b>Conjugation</b>	Unconjugated
<b>Note</b>	For laboratory use only. Not for any clinical, therapeutic, or diagnostic use in humans or animals. Not for animal or human consumption.



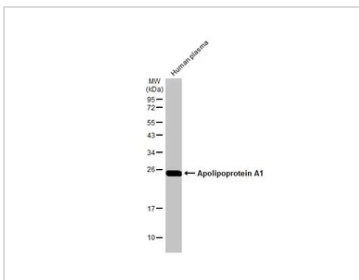
For full product information, images and publications, please visit our [website](#).

DATA IMAGES



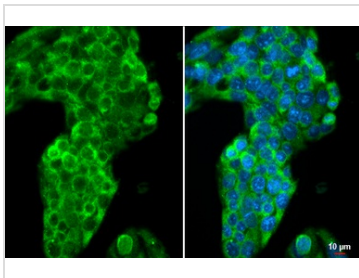
**GTX637312 WB Image**

Mouse plasma and Rat plasma (30 µg) were separated by 12% SDS-PAGE, and the membrane was blotted with Apolipoprotein A1 antibody [HL1713] (GTX637312) diluted at 1:10000. The HRP-conjugated anti-rabbit IgG antibody (GTX213110-01) was used to detect the primary antibody.



**GTX637312 WB Image**

Human plasma (30 µg) was separated by 12% SDS-PAGE, and the membrane was blotted with Apolipoprotein A1 antibody [HL1713] (GTX637312) diluted at 1:100000. The HRP-conjugated anti-rabbit IgG antibody (GTX213110-01) was used to detect the primary antibody.



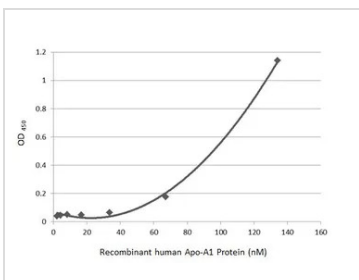
**GTX637312 ICC/IF Image**

Apolipoprotein A1 antibody [HL1713] detects Apolipoprotein A1 protein at cytoplasm by immunofluorescent analysis.

Sample: HepG2 cells were fixed in ice-cold MeOH for 5 min.

Green: Apolipoprotein A1 stained by Apolipoprotein A1 antibody [HL1713] (GTX637312) diluted at 1:500.

Blue: Fluoroshield with DAPI (GTX30920).



**GTX637312 ELISA Image**

Indirect ELISA analysis was performed by coating the plate with recombinant HEK293 expressed, full-length human Apo-A1 Protein, His Tag (134.23-2.1 nM). Coated protein was probed with Apolipoprotein A1 antibody [HL1713] (GTX637312) (1 µg/mL). Goat anti-rabbit IgG antibody (HRP) (GTX213110-01) (1:10000) was used to detect the bound primary antibody.



For full product information, images and publications, please visit our [website](#).