



SZABO SCANDIC

Part of Europa Biosite

Produktinformation



Forschungsprodukte & Biochemikalien



Zellkultur & Verbrauchsmaterial



Diagnostik & molekulare Diagnostik



Laborgeräte & Service

Weitere Information auf den folgenden Seiten!
See the following pages for more information!



Lieferung & Zahlungsart

siehe unsere [Liefer- und Versandbedingungen](#)

Zuschläge

- Mindermengenzuschlag
- Trockeneiszuschlag
- Gefahrgutzuschlag
- Expressversand

SZABO-SCANDIC HandelsgmbH

Quellenstraße 110, A-1100 Wien

T. +43(0)1 489 3961-0

F. +43(0)1 489 3961-7

mail@szabo-scandic.com

www.szabo-scandic.com

[linkedin.com/company/szaboscandic](https://www.linkedin.com/company/szaboscandic) 

Histone H3S10ph (phospho Ser10) antibody [HL1752]

Cat. No. GTX637402

Host	Rabbit
Clonality	Monoclonal
Isotype	IgG
Application	WB, ICC/IF, IHC-P, IHC-Wm
Reactivity	Human, Mouse, Zebrafish

Package
100 µl, 25 µl

APPLICATION

Application Note

*Optimal dilutions/concentrations should be determined by the researcher.

Suggested dilution	Recommended dilution
WB	1:500-1:3000
ICC/IF	Assay dependent
IHC-P	Assay dependent
IHC-Wm	Assay dependent

Not tested in other applications.

Calculated MW 15 kDa. ([Note](#))

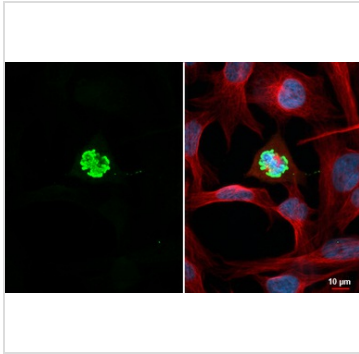
PROPERTIES

Form	Liquid
Buffer	PBS
Preservative	No Preservative
Storage	Store as concentrated solution. Centrifuge briefly prior to opening vial. For short-term storage (1-2 weeks), store at 4°C. For long-term storage, aliquot and store at -20°C or below. Avoid multiple freeze-thaw cycles.
Concentration	1 mg/ml (Please refer to the vial label for the specific concentration.)
Immunogen	Carrier-protein conjugated synthetic peptide surrounding phospho Ser10 of Histone H3. The exact sequence is proprietary.
Purification	Affinity purified by Protein A.
Conjugation	Unconjugated
Note	For laboratory use only. Not for any clinical, therapeutic, or diagnostic use in humans or animals. Not for animal or human consumption.



For full product information, images and publications, please visit our [website](#).

DATA IMAGES

**GTX637402 ICC/IF Image**

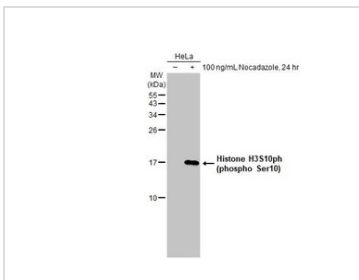
Histone H3S10ph (phospho Ser10) antibody [HL1752] detects Histone H3S10ph (phospho Ser10) protein at chromosome by immunofluorescent analysis.

Sample: HeLa cells were fixed in 2% paraformaldehyde at 37°C for 30 min.

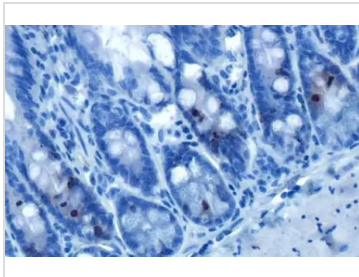
Green: Histone H3S10ph (phospho Ser10) stained by Histone H3S10ph (phospho Ser10) antibody [HL1752] (GTX637402) diluted at 1:500.

Red: alpha Tubulin, a cytoskeleton marker, stained by alpha Tubulin antibody [GT114] (GTX628802) diluted at 1:1000.

Blue: Fluoroshield with DAPI (GTX30920).

**GTX637402 WB Image**

Untreated (-) and treated (+) HeLa whole cell extracts (30 µg) were separated by 15% SDS-PAGE, and the membrane was blotted with Histone H3S10ph (phospho Ser10) antibody [HL1752] (GTX637402) diluted at 1:1000. The HRP-conjugated anti-rabbit IgG antibody (GTX213110-01) was used to detect the primary antibody.

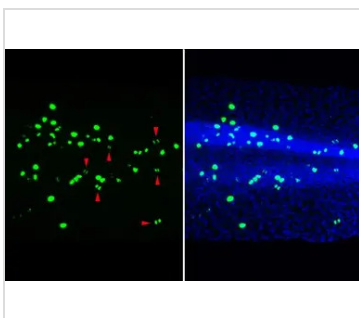
**GTX637402 IHC-P Image**

Histone H3S10ph (phospho Ser10) antibody [HL1752] detects Histone H3S10ph (phospho Ser10) protein at nucleus by immunohistochemical analysis.

Sample: Paraffin-embedded mouse intestine.

Histone H3S10ph (phospho Ser10) stained by Histone H3S10ph (phospho Ser10) antibody [HL1752] (GTX637402) diluted at 1:100.

Antigen Retrieval: Citrate buffer, pH 6.0, 15 min

**GTX637402 IHC-Wm Image**

Histone H3S10ph (phospho Ser10) antibody [HL1752] detects Histone H3S10ph (phospho Ser10) protein on whole mount zebrafish by immunohistochemical analysis.

Sample: Paraformaldehyde-fixed 2 days-post-fertilization zebrafish embryo.

Green: Histone H3S10ph (phospho Ser10) stained by Histone H3S10ph (phospho Ser10) antibody [HL1752] (GTX637402) diluted at 1:100.

Blue: Hoechst 33342 staining.

Antigen Retrieval: Tris-HCl buffer, pH 9.0, 20 min at 70°C



For full product information, images and publications, please visit our [website](https://www.genetex.com).