



SZABO SCANDIC

Part of Europa Biosite

Produktinformation



Forschungsprodukte & Biochemikalien



Zellkultur & Verbrauchsmaterial



Diagnostik & molekulare Diagnostik



Laborgeräte & Service

Weitere Information auf den folgenden Seiten!
See the following pages for more information!



Lieferung & Zahlungsart

siehe unsere [Liefer- und Versandbedingungen](#)

Zuschläge

- Mindermengenzuschlag
- Trockeneiszuschlag
- Gefahrgutzuschlag
- Expressversand

SZABO-SCANDIC HandelsgmbH

Quellenstraße 110, A-1100 Wien

T. +43(0)1 489 3961-0

F. +43(0)1 489 3961-7

mail@szabo-scandic.com

www.szabo-scandic.com

[linkedin.com/company/szaboscandic](https://www.linkedin.com/company/szaboscandic) 

Calbindin + Calretinin antibody [HL1787]

Cat. No. GTX637439

Host	Rabbit
Clonality	Monoclonal
Isotype	IgG
Application	WB, ICC/IF, IHC-P, IHC-Fr
Reactivity	Human, Mouse, Rat

Package
100 µl, 25 µl

APPLICATION

Application Note

*Optimal dilutions/concentrations should be determined by the researcher.

Suggested dilution	Recommended dilution
WB	1:500-1:3000
ICC/IF	Assay dependent
IHC-P	1:100-1:1000
IHC-Fr	Assay dependent

Not tested in other applications.

Calculated MW 30 kDa. ([Note](#))

PROPERTIES

Form	Liquid
Buffer	PBS
Preservative	No preservative
Storage	Store as concentrated solution. Centrifuge briefly prior to opening vial. For short-term storage (1-2 weeks), store at 4°C. For long-term storage, aliquot and store at -20°C or below. Avoid multiple freeze-thaw cycles.
Concentration	1 mg/ml (Please refer to the vial label for the specific concentration.)
Immunogen	Recombinant fragment of human Calbindin
Purification	Affinity purified by Protein A.
Conjugation	Unconjugated

Note

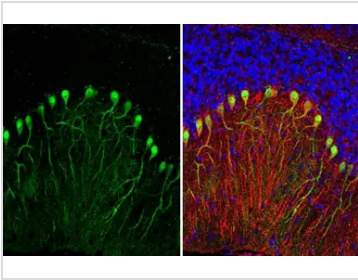
For laboratory research use only. Not for any clinical, therapeutic, or diagnostic use in humans or animals. Not for animal or human consumption.

Purchasers shall not, and agree not to enable third parties to, analyze, copy, reverse engineer or otherwise attempt to determine the structure or sequence of the product.



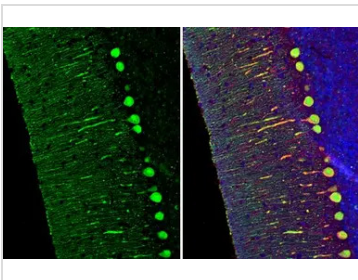
For full product information, images and publications, please visit our [website](#).

DATA IMAGES



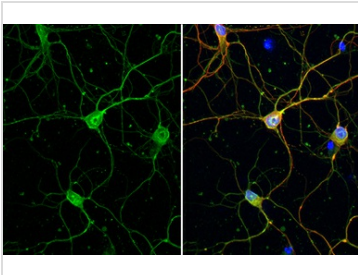
GTX637439 IHC-P Image

Calbindin antibody [HL1787] detects Calbindin protein at cytoplasm by immunohistochemical analysis.
 Sample: Paraffin-embedded mouse cerebellum.
 Green: Calbindin stained by Calbindin antibody [HL1787] (GTX637439) diluted at 1:250.
 Red: NF-H, a neural marker, stained by NF-H antibody [GT114] (GTX634289) diluted at 1:500.
 Blue: Fluoroshield with DAPI (GTX30920).
 Antigen Retrieval: Citrate buffer, pH 6.0, 15 min



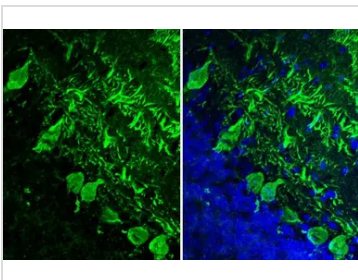
GTX637439 IHC-P Image

Calbindin antibody [HL1787] detects Calbindin protein at cytoplasm by immunohistochemical analysis.
 Sample: Paraffin-embedded rat cerebellum.
 Green: Calbindin stained by Calbindin antibody [HL1787] (GTX637439) diluted at 1:250.
 Red: NF-H, a neural marker, stained by NF-H antibody [GT114] (GTX634289) diluted at 1:500.
 Blue: Fluoroshield with DAPI (GTX30920).
 Antigen Retrieval: Citrate buffer, pH 6.0, 15 min



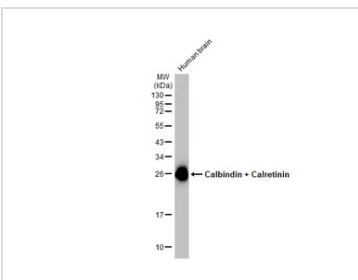
GTX637439 ICC/IF Image

Calbindin antibody [HL1787] detects Calbindin protein at cytoskeleton by immunofluorescent analysis.
 Sample: DIV9 rat E18 primary cortical neuron cells were fixed in 4% paraformaldehyde at RT for 15 min.
 Green: Calbindin stained by Calbindin antibody [HL1787] (GTX637439) diluted at 1:250.
 Red: Tau, an axon marker, stained by Tau antibody [GT287] (GTX634809) diluted at 1:500.
 Blue: Fluoroshield with DAPI (GTX30920).



GTX637439 IHC-Fr Image

Calbindin + Calretinin antibody [HL1787] detects Calbindin + Calretinin protein at cytoplasm by immunohistochemical analysis.
 Sample: Frozen-sectioned mouse cerebellum.
 Green: Calbindin + Calretinin stained by Calbindin + Calretinin antibody [HL1787] (GTX637439) diluted at 1:100.
 Blue: Fluoroshield with DAPI (GTX30920).



GTX637439 WB Image

Human tissue extract (30 µg) was separated by 12% SDS-PAGE, and the membrane was blotted with Calbindin + Calretinin antibody [HL1787] (GTX637439) diluted at 1:500. The HRP-conjugated anti-rabbit IgG antibody (GTX213110-01) was used to detect the primary antibody, and the signal was developed with Trident ECL plus-Enhanced.



For full product information, images and publications, please visit our [website](#).