



SZABO SCANDIC

Part of Europa Biosite

Produktinformation



Forschungsprodukte & Biochemikalien



Zellkultur & Verbrauchsmaterial



Diagnostik & molekulare Diagnostik



Laborgeräte & Service

Weitere Information auf den folgenden Seiten!
See the following pages for more information!



Lieferung & Zahlungsart

siehe unsere [Liefer- und Versandbedingungen](#)

Zuschläge

- Mindermengenzuschlag
- Trockeneiszuschlag
- Gefahrgutzuschlag
- Expressversand

SZABO-SCANDIC HandelsgmbH

Quellenstraße 110, A-1100 Wien

T. +43(0)1 489 3961-0

F. +43(0)1 489 3961-7

mail@szabo-scandic.com

www.szabo-scandic.com

[linkedin.com/company/szaboscandic](https://www.linkedin.com/company/szaboscandic) 

HSC70 antibody [HL1788]

Cat. No. GTX637440

Host	Rabbit
Clonality	Monoclonal
Isotype	IgG
Application	WB, IHC-P
Reactivity	Human, Mouse, Rat, Zebrafish

Package
100 µl, 25 µl

APPLICATION

Application Note

*Optimal dilutions/concentrations should be determined by the researcher.

Suggested dilution	Recommended dilution
WB	1:5000-1:30000
IHC-P	Assay dependent

Not tested in other applications.

Calculated MW 71 kDa. ([Note](#))**Product Note** This antibody is specific for human HSC70 protein, and it does not cross react with human HSPA1A, HSPA1L, HSPA2, HSPA5, HSPA6, and HSPA9 protein.

PROPERTIES

Form	Liquid
Buffer	PBS
Preservative	No preservative
Storage	Store as concentrated solution. Centrifuge briefly prior to opening vial. For short-term storage (1-2 weeks), store at 4°C. For long-term storage, aliquot and store at -20°C or below. Avoid multiple freeze-thaw cycles.
Concentration	1 mg/ml (Please refer to the vial label for the specific concentration.)
Immunogen	Recombinant fragment of human HSC70.
Purification	Affinity purified by Protein A.
Conjugation	Unconjugated

Note

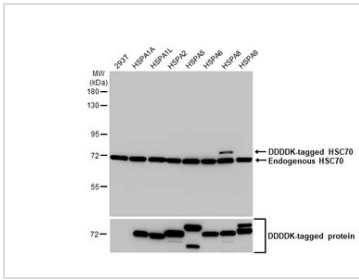
For laboratory research use only. Not for any clinical, therapeutic, or diagnostic use in humans or animals. Not for animal or human consumption.

Purchasers shall not, and agree not to enable third parties to, analyze, copy, reverse engineer or otherwise attempt to determine the structure or sequence of the product.



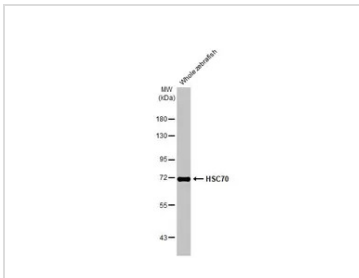
For full product information, images and publications, please visit our [website](#).

DATA IMAGES



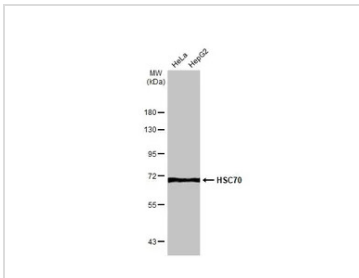
GTX637440 WB Image

Non-transfected (-) and transfected (+) 293T whole cell extracts were separated by 7.5% SDS-PAGE, and the membrane was blotted with HSC70 antibody [HL1788] (GTX637440) diluted at 1:30000. The HRP-conjugated anti-rabbit IgG antibody (GTX213110-01) was used to detect the primary antibody.



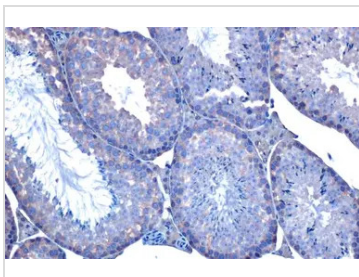
GTX637440 WB Image

Whole zebrafish extract (30 µg) was separated by 7.5% SDS-PAGE, and the membrane was blotted with HSC70 antibody [HL1788] (GTX637440) diluted at 1:1000. The HRP-conjugated anti-rabbit IgG antibody (GTX213110-01) was used to detect the primary antibody.



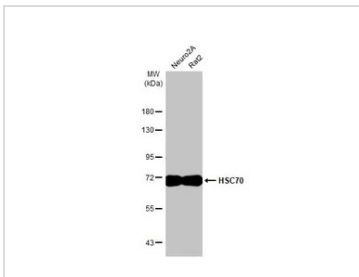
GTX637440 WB Image

Various whole cell extracts (30 µg) were separated by 7.5% SDS-PAGE, and the membrane was blotted with HSC70 antibody [HL1788] (GTX637440) diluted at 1:1000. The HRP-conjugated anti-rabbit IgG antibody (GTX213110-01) was used to detect the primary antibody.



GTX637440 IHC-P Image

HSC70 antibody [HL1788] detects HSC70 protein at cytoplasm by immunohistochemical analysis.
 Sample: Paraffin-embedded mouse testis.
 HSC70 stained by HSC70 antibody [HL1788] (GTX637440) diluted at 1:100.
 Antigen Retrieval: Citrate buffer, pH 6.0, 15 min



GTX637440 WB Image

Various whole cell extracts (30 µg) were separated by 7.5% SDS-PAGE, and the membrane was blotted with HSC70 antibody [HL1788] (GTX637440) diluted at 1:1000. The HRP-conjugated anti-rabbit IgG antibody (GTX213110-01) was used to detect the primary antibody.



For full product information, images and publications, please visit our [website](#).