



SZABO SCANDIC

Part of Europa Biosite

Produktinformation



Forschungsprodukte & Biochemikalien



Zellkultur & Verbrauchsmaterial



Diagnostik & molekulare Diagnostik



Laborgeräte & Service

Weitere Information auf den folgenden Seiten!
See the following pages for more information!



Lieferung & Zahlungsart

siehe unsere [Liefer- und Versandbedingungen](#)

Zuschläge

- Mindermengenzuschlag
- Trockeneiszuschlag
- Gefahrgutzuschlag
- Expressversand

SZABO-SCANDIC HandelsgmbH

Quellenstraße 110, A-1100 Wien

T. +43(0)1 489 3961-0

F. +43(0)1 489 3961-7

mail@szabo-scandic.com

www.szabo-scandic.com

[linkedin.com/company/szaboscandic](https://www.linkedin.com/company/szaboscandic) 

EPO antibody [HL1793]

Cat. No. GTX637445

Host	Rabbit
Clonality	Monoclonal
Isotype	IgG
Application	WB, ELISA, Sandwich ELISA
Reactivity	Human

Package
100 µl, 25 µl

APPLICATION

Application Note

*Optimal dilutions/concentrations should be determined by the researcher.

Suggested dilution	Recommended dilution
WB	Assay dependent
ELISA	Assay dependent
Sandwich ELISA	Assay dependent

Note : Capture : GTX637446/GTX637445, Detection : GTX637445/GTX637446.

Please notice that GTX637445/GTX637446 needs to be conjugated to HRP to function as the detection antibody when paired with GTX637446/GTX637445, Please contact us for custom HRP-conjugated antibody.

Not tested in other applications.

Calculated MW 21 kDa. ([Note](#))

PROPERTIES

Form	Liquid
Buffer	PBS
Preservative	No preservative
Storage	Store as concentrated solution. Centrifuge briefly prior to opening vial. For short-term storage (1-2 weeks), store at 4°C. For long-term storage, aliquot and store at -20°C or below. Avoid multiple freeze-thaw cycles.
Concentration	1 mg/ml (Please refer to the vial label for the specific concentration.)
Immunogen	Recombinant fragment of human EPO
Purification	Affinity purified by Protein A.
Conjugation	Unconjugated

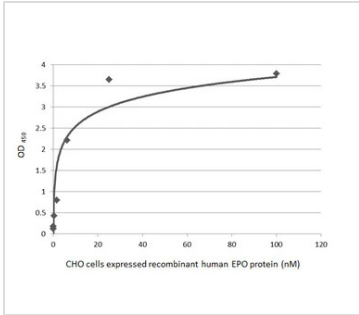


For full product information, images and publications, please visit our [website](#).

For laboratory research use only. Not for any clinical, therapeutic, or diagnostic use in humans or animals. Not for animal or human consumption.

Note
Purchasers shall not, and agree not to enable third parties to, analyze, copy, reverse engineer or otherwise attempt to determine the structure or sequence of the product.

DATA IMAGES



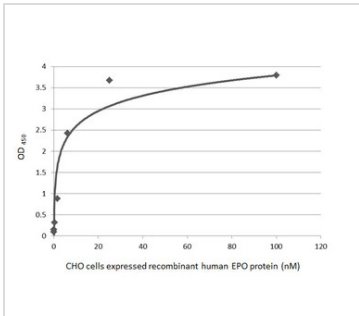
GTX637445 ELISA Image

Sandwich ELISA detection of recombinant CHO cells expressed, full-length human EPO protein using antibodies as below.

Capture: EPO antibody [HL1793] (GTX637445) (5 µg/mL)

Detection: HRP-conjugated EPO antibody [HL1794] (GTX637446) (1 µg/mL)

Please notice that GTX637446 needs to be conjugated to HRP to function as the detection antibody when paired with GTX637445. Please contact us for custom HRP-conjugated antibody.



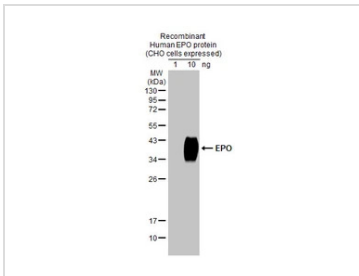
GTX637445 ELISA Image

Sandwich ELISA detection of recombinant CHO cells expressed, full-length human EPO protein using antibodies as below.

Capture: EPO antibody [HL1794] (GTX637446) (5 µg/mL)

Detection: HRP-conjugated EPO antibody [HL1793] (GTX637445) (1 µg/mL)

Please notice that GTX637445 needs to be conjugated to HRP to function as the detection antibody when paired with GTX637446. Please contact us for custom HRP-conjugated antibody.



GTX637445 WB Image

Recombinant human EPO protein (CHO cells expressed) was separated by 12% SDS-PAGE, and the membrane was blotted with EPO antibody [HL1793] (GTX637445) diluted at 1:20000. The HRP-conjugated anti-rabbit IgG antibody (GTX213110-01) was used to detect the primary antibody.



For full product information, images and publications, please visit our [website](#).