



SZABO SCANDIC

Part of Europa Biosite

Produktinformation



Forschungsprodukte & Biochemikalien



Zellkultur & Verbrauchsmaterial



Diagnostik & molekulare Diagnostik



Laborgeräte & Service

Weitere Information auf den folgenden Seiten!
See the following pages for more information!



Lieferung & Zahlungsart

siehe unsere [Liefer- und Versandbedingungen](#)

Zuschläge

- Mindermengenzuschlag
- Trockeneiszuschlag
- Gefahrgutzuschlag
- Expressversand

SZABO-SCANDIC HandelsgmbH

Quellenstraße 110, A-1100 Wien

T. +43(0)1 489 3961-0

F. +43(0)1 489 3961-7

mail@szabo-scandic.com

www.szabo-scandic.com

[linkedin.com/company/szaboscandic](https://www.linkedin.com/company/szaboscandic) 

EPO antibody [HL1794]

Cat. No. GTX637446

| | |
|--------------------|---------------------------|
| Host | Rabbit |
| Clonality | Monoclonal |
| Isotype | IgG |
| Application | WB, ELISA, Sandwich ELISA |
| Reactivity | Human |

Package
100 µl, 25 µl

APPLICATION

Application Note

*Optimal dilutions/concentrations should be determined by the researcher.

| Suggested dilution | Recommended dilution |
|--------------------|----------------------|
| WB | Assay dependent |
| ELISA | Assay dependent |
| Sandwich ELISA | Assay dependent |

Note : Capture : GTX637446/GTX637445, Detection : GTX637445/GTX637446.

Please notice that GTX637445/GTX637446 needs to be conjugated to HRP to function as the detection antibody when paired with GTX637446/GTX637445, Please contact us for custom HRP-conjugated antibody.

Not tested in other applications.

Calculated MW 21 kDa. ([Note](#))

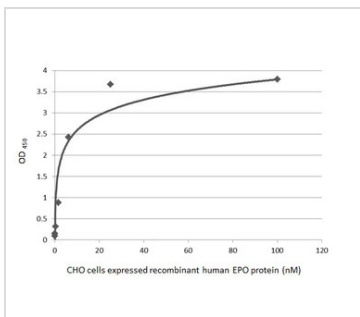
PROPERTIES

| | |
|----------------------|--|
| Form | Liquid |
| Buffer | PBS |
| Preservative | No Preservative |
| Storage | Store as concentrated solution. Centrifuge briefly prior to opening vial. For short-term storage (1-2 weeks), store at 4°C. For long-term storage, aliquot and store at -20°C or below. Avoid multiple freeze-thaw cycles. |
| Concentration | 1 mg/ml (Please refer to the vial label for the specific concentration.) |
| Immunogen | Recombinant protein of human EPO |
| Purification | Affinity purified by Protein A. |
| Conjugation | Unconjugated |
| Note | For laboratory use only. Not for any clinical, therapeutic, or diagnostic use in humans or animals. Not for animal or human consumption. |



For full product information, images and publications, please visit our [website](#).

DATA IMAGES



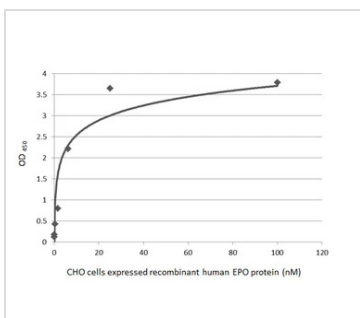
GTX637446 ELISA Image

Sandwich ELISA detection of recombinant CHO cells expressed, full-length human EPO protein using antibodies as below.

Capture: EPO antibody [HL1794] (GTX637446) (5 µg/mL)

Detection: HRP-conjugated EPO antibody [HL1793] (GTX637445) (1 µg/mL)

Please notice that GTX637445 needs to be conjugated to HRP to function as the detection antibody when paired with GTX637446. Please contact us for custom HRP-conjugated antibody.



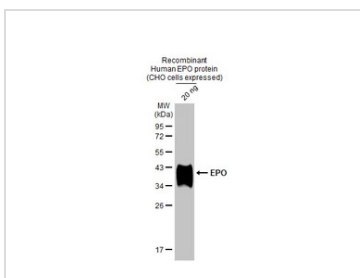
GTX637446 ELISA Image

Sandwich ELISA detection of recombinant CHO cells expressed, full-length human EPO protein using antibodies as below.

Capture: EPO antibody [HL1793] (GTX637445) (5 µg/mL)

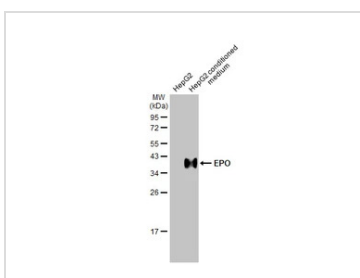
Detection: HRP-conjugated EPO antibody [HL1794] (GTX637446) (1 µg/mL)

Please notice that GTX637446 needs to be conjugated to HRP to function as the detection antibody when paired with GTX637445. Please contact us for custom HRP-conjugated antibody.



GTX637446 WB Image

Recombinant human EPO protein (CHO cells expressed) was separated by 12% SDS-PAGE, and the membrane was blotted with EPO antibody [HL1794] (GTX637446) diluted at 1:20000. The HRP-conjugated anti-rabbit IgG antibody (GTX213110-01) was used to detect the primary antibody.



GTX637446 WB Image

HepG2 whole cell extract and conditioned medium (30 µg) were separated by 12% SDS-PAGE, and the membrane was blotted with EPO antibody [HL1794] (GTX637446) diluted at 1:2000. The HRP-conjugated anti-rabbit IgG antibody (GTX213110-01) was used to detect the primary antibody.



For full product information, images and publications, please visit our [website](#).