



SZABO SCANDIC

Part of Europa Biosite

Produktinformation



Forschungsprodukte & Biochemikalien



Zellkultur & Verbrauchsmaterial



Diagnostik & molekulare Diagnostik



Laborgeräte & Service

Weitere Information auf den folgenden Seiten!
See the following pages for more information!



Lieferung & Zahlungsart

siehe unsere [Liefer- und Versandbedingungen](#)

Zuschläge

- Mindermengenzuschlag
- Trockeneiszuschlag
- Gefahrgutzuschlag
- Expressversand

SZABO-SCANDIC HandelsgmbH

Quellenstraße 110, A-1100 Wien

T. +43(0)1 489 3961-0

F. +43(0)1 489 3961-7

mail@szabo-scandic.com

www.szabo-scandic.com

[linkedin.com/company/szaboscandic](https://www.linkedin.com/company/szaboscandic) 

Prealbumin antibody [HL1823]

Cat. No. GTX637548

Host	Rabbit
Clonality	Monoclonal
Isotype	IgG
Application	WB, ICC/IF, IHC-P
Reactivity	Human, Mouse, Rat

Package
100 µl, 25 µl

APPLICATION

Application Note

*Optimal dilutions/concentrations should be determined by the researcher.

Suggested dilution	Recommended dilution
WB	1:1000-1:10000
ICC/IF	Assay dependent
IHC-P	Assay dependent

Not tested in other applications.

Calculated MW 16 kDa. ([Note](#))

PROPERTIES

Form	Liquid
Buffer	PBS
Preservative	No preservative
Storage	Store as concentrated solution. Centrifuge briefly prior to opening vial. For short-term storage (1-2 weeks), store at 4°C. For long-term storage, aliquot and store at -20°C or below. Avoid multiple freeze-thaw cycles.
Concentration	1 mg/ml (Please refer to the vial label for the specific concentration.)
Immunogen	Full length human Prealbumin
Purification	Affinity purified by Protein A.
Conjugation	Unconjugated

Note

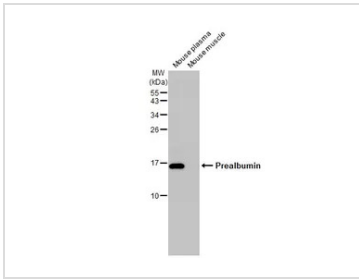
For laboratory research use only. Not for any clinical, therapeutic, or diagnostic use in humans or animals. Not for animal or human consumption.

Purchasers shall not, and agree not to enable third parties to, analyze, copy, reverse engineer or otherwise attempt to determine the structure or sequence of the product.



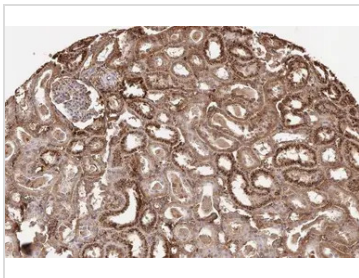
For full product information, images and publications, please visit our [website](#).

DATA IMAGES



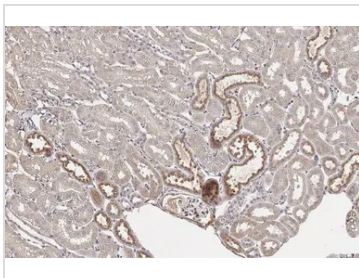
GTX637548 WB Image

Various tissue extracts (50 µg) were separated by 15% SDS-PAGE, and the membrane was blotted with Prealbumin antibody [HL1823] (GTX637548) diluted at 1:5000. The HRP-conjugated anti-rabbit IgG antibody (GTX213110-01) was used to detect the primary antibody.



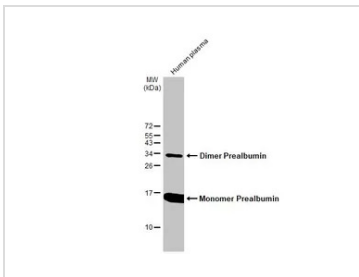
GTX637548 IHC-P Image

Prealbumin antibody [HL1823] detects secreted Prealbumin protein by immunohistochemical analysis.
 Sample: Paraffin-embedded rat kidney.
 Prealbumin stained by Prealbumin antibody [HL1823] (GTX637548) diluted at 1:100.
 Antigen Retrieval: Citrate buffer, pH 6.0, 15 min



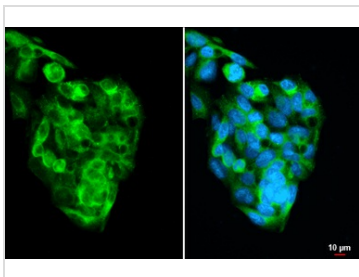
GTX637548 IHC-P Image

Prealbumin antibody [HL1823] detects secreted Prealbumin protein by immunohistochemical analysis.
 Sample: Paraffin-embedded mouse kidney.
 Prealbumin stained by Prealbumin antibody [HL1823] (GTX637548) diluted at 1:100.
 Antigen Retrieval: Citrate buffer, pH 6.0, 15 min



GTX637548 WB Image

Human plasma (30 µg) was separated by 15% SDS-PAGE, and the membrane was blotted with Prealbumin antibody [HL1823] (GTX637548) diluted at 1:1000. The HRP-conjugated anti-rabbit IgG antibody (GTX213110-01) was used to detect the primary antibody.



GTX637548 ICC/IF Image

Prealbumin antibody [HL1823] detects Prealbumin protein by immunofluorescent analysis.
 Sample: HepG2 cells were fixed in 4% paraformaldehyde at RT for 15 min.
 Green: Prealbumin stained by Prealbumin antibody [HL1823] (GTX637548) diluted at 1:500.
 Blue: Fluoroshield with DAPI (GTX30920).
 Scale bar= 10µm.



For full product information, images and publications, please visit our [website](#).