



SZABO SCANDIC

Part of Europa Biosite

Produktinformation



Forschungsprodukte & Biochemikalien



Zellkultur & Verbrauchsmaterial



Diagnostik & molekulare Diagnostik



Laborgeräte & Service

Weitere Information auf den folgenden Seiten!
See the following pages for more information!



Lieferung & Zahlungsart

siehe unsere [Liefer- und Versandbedingungen](#)

Zuschläge

- Mindermengenzuschlag
- Trockeneiszuschlag
- Gefahrgutzuschlag
- Expressversand

SZABO-SCANDIC HandelsgmbH

Quellenstraße 110, A-1100 Wien

T. +43(0)1 489 3961-0

F. +43(0)1 489 3961-7

mail@szabo-scandic.com

www.szabo-scandic.com

[linkedin.com/company/szaboscandic](https://www.linkedin.com/company/szaboscandic) 

CRALBP antibody [HL1834]

Cat. No. GTX637559

Host	Rabbit
Clonality	Monoclonal
Isotype	IgG
Application	WB
Reactivity	Mouse

Package
100 µl, 25 µl

APPLICATION

Application Note

*Optimal dilutions/concentrations should be determined by the researcher.

Suggested dilution	Recommended dilution
--------------------	----------------------

WB	1:500-1:3000
----	--------------

Not tested in other applications.

Calculated MW	36 kDa. (Note)
---------------	----------------------------------

PROPERTIES

Form	Liquid
------	--------

Buffer	PBS
--------	-----

Preservative	No preservative
--------------	-----------------

Storage	Store as concentrated solution. Centrifuge briefly prior to opening vial. For short-term storage (1-2 weeks), store at 4°C. For long-term storage, aliquot and store at -20°C or below. Avoid multiple freeze-thaw cycles.
---------	--

Concentration	1 mg/ml (Please refer to the vial label for the specific concentration.)
---------------	--

Immunogen	Recombinant fragment of human CRALBP.
-----------	---------------------------------------

Purification	Affinity purified by Protein A.
--------------	---------------------------------

Conjugation	Unconjugated
-------------	--------------

Note

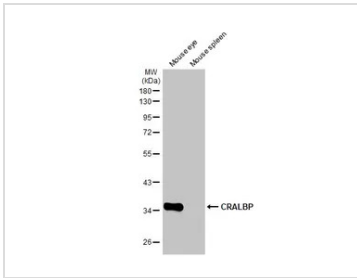
For laboratory research use only. Not for any clinical, therapeutic, or diagnostic use in humans or animals. Not for animal or human consumption.

Purchasers shall not, and agree not to enable third parties to, analyze, copy, reverse engineer or otherwise attempt to determine the structure or sequence of the product.



For full product information, images and publications, please visit our [website](#).

DATA IMAGES

**GTX637559 WB Image**

Various tissue extracts (50 μ g) were separated by 10% SDS-PAGE, and the membrane was blotted with CRALBP antibody [HL1834] (GTX637559) diluted at 1:1000. The HRP-conjugated anti-rabbit IgG antibody (GTX213110-01) was used to detect the primary antibody.



For full product information, images and publications, please visit our [website](#).