



SZABO SCANDIC

Part of Europa Biosite

Produktinformation



Forschungsprodukte & Biochemikalien



Zellkultur & Verbrauchsmaterial



Diagnostik & molekulare Diagnostik



Laborgeräte & Service

Weitere Information auf den folgenden Seiten!
See the following pages for more information!



Lieferung & Zahlungsart

siehe unsere [Liefer- und Versandbedingungen](#)

Zuschläge

- Mindermengenzuschlag
- Trockeneiszuschlag
- Gefahrgutzuschlag
- Expressversand

SZABO-SCANDIC HandelsgmbH

Quellenstraße 110, A-1100 Wien

T. +43(0)1 489 3961-0

F. +43(0)1 489 3961-7

mail@szabo-scandic.com

www.szabo-scandic.com

[linkedin.com/company/szaboscandic](https://www.linkedin.com/company/szaboscandic) 

GFP antibody [HL1845]

Cat. No. GTX637570

Host	Rabbit
Clonality	Monoclonal
Isotype	IgG
Application	WB, ICC/IF, IHC-P (cell pellet)
Reactivity	Species independent

Package
100 µl, 25 µl

APPLICATION

Application Note

*Optimal dilutions/concentrations should be determined by the researcher.

Suggested dilution	Recommended dilution
WB	1:1000-1:10000
ICC/IF	Assay dependent
IHC-P (cell pellet)	Assay dependent

Not tested in other applications.

PROPERTIES

Form	Liquid
Buffer	PBS
Preservative	No preservative
Storage	Store as concentrated solution. Centrifuge briefly prior to opening vial. For short-term storage (1-2 weeks), store at 4°C. For long-term storage, aliquot and store at -20°C or below. Avoid multiple freeze-thaw cycles.
Concentration	1 mg/ml (Please refer to the vial label for the specific concentration.)
Immunogen	Full length GFP recombinant protein
Purification	Affinity purified by Protein A.
Conjugation	Unconjugated

Note

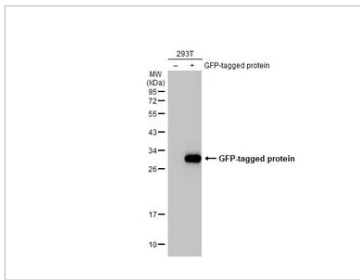
For laboratory research use only. Not for any clinical, therapeutic, or diagnostic use in humans or animals. Not for animal or human consumption.

Purchasers shall not, and agree not to enable third parties to, analyze, copy, reverse engineer or otherwise attempt to determine the structure or sequence of the product.



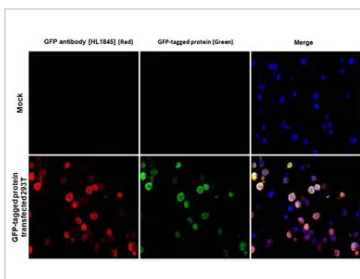
For full product information, images and publications, please visit our [website](#).

DATA IMAGES



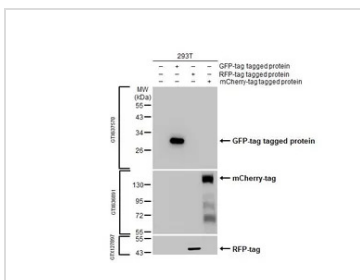
GTX637570 WB Image

Non-transfected (-) and transfected (+) 293T whole cell extracts (30 µg) were separated by 12% SDS-PAGE, and the membrane was blotted with GFP antibody [HL1845] (GTX637570) diluted at 1:5000. The HRP-conjugated anti-rabbit IgG antibody (GTX213110-01) was used to detect the primary antibody.



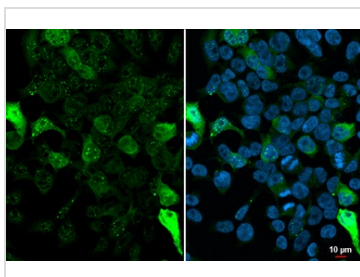
GTX637570 IHC-P (cell pellet) Image

GFP antibody [HL1845] detects GFP protein by immunohistochemical analysis.
 Sample: Paraffin-embedded mock and GFP-tagged protein transfected 293T.
 Red: GFP-tagged protein stained by GFP antibody [HL1845] (GTX637570) diluted at 1:1000.
 Green: GFP-tagged protein is expressed in the transfected cells.
 Blue: Fluoroshield with DAPI (GTX30920).
 Antigen Retrieval: Citrate buffer, pH 6.0, 15 min



GTX637570 WB Image

Non-transfected (-) and transfected (+) 293T whole cell extracts (30 µg) were separated by 12% SDS-PAGE, and the membrane was blotted with GFP antibody [HL1845] (GTX637570) diluted at 1:5000. The HRP-conjugated anti-rabbit IgG antibody (GTX213110-01) was used to detect the primary antibody.



GTX637570 ICC/IF Image

GFP-tag antibody detects GFP tagged protein by immunofluorescent analysis.
 Sample: GFP tagged protein transfected 293T cells were fixed in 4% paraformaldehyde at RT for 15 min.
 Green: GFP tagged protein stained by GFP-tag antibody (GTX637570) diluted at 1500.
 Blue: Fluoroshield with DAPI (GTX30920).



For full product information, images and publications, please visit our [website](#).