



SZABO SCANDIC

Part of Europa Biosite

Produktinformation



Forschungsprodukte & Biochemikalien



Zellkultur & Verbrauchsmaterial



Diagnostik & molekulare Diagnostik



Laborgeräte & Service

Weitere Information auf den folgenden Seiten!
See the following pages for more information!



Lieferung & Zahlungsart

siehe unsere [Liefer- und Versandbedingungen](#)

Zuschläge

- Mindermengenzuschlag
- Trockeneiszuschlag
- Gefahrgutzuschlag
- Expressversand

SZABO-SCANDIC HandelsgmbH

Quellenstraße 110, A-1100 Wien

T. +43(0)1 489 3961-0

F. +43(0)1 489 3961-7

mail@szabo-scandic.com

www.szabo-scandic.com

[linkedin.com/company/szaboscandic](https://www.linkedin.com/company/szaboscandic) 

Equine Encephalitis Virus nsP2 antibody [HL1920]

Cat. No. GTX637669

Host	Rabbit
Clonality	Monoclonal
Isotype	IgG
Application	WB, ICC/IF, IHC-P (cell pellet)
Reactivity	Venezuelan equine encephalitis virus, Eastern equine encephalitis virus, Western equine encephalitis virus

Package
100 µl, 25 µl

APPLICATION

Application Note

*Optimal dilutions/concentrations should be determined by the researcher.

Suggested dilution	Recommended dilution
WB	1:1000-1:10000
ICC/IF	1:100-1:1000
IHC-P (cell pellet)	Assay dependent

Not tested in other applications.

Product Note This antibody detects nsP2 protein of VEEV, EEEV, and WEEV.

PROPERTIES

Form	Liquid
Buffer	PBS
Preservative	No preservative
Storage	Store as concentrated solution. Centrifuge briefly prior to opening vial. For short-term storage (1-2 weeks), store at 4°C. For long-term storage, aliquot and store at -20°C or below. Avoid multiple freeze-thaw cycles.
Concentration	1 mg/ml (Please refer to the vial label for the specific concentration.)
Immunogen	Recombinant fragment of Venezuelan Equine Encephalitis Virus nsP2. (Strain P676)
Purification	Affinity purified by Protein A.
Conjugation	Unconjugated

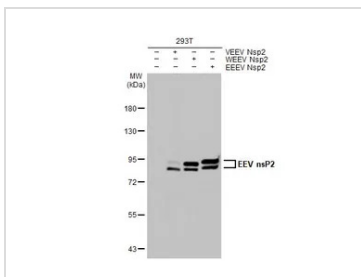
Note For laboratory research use only. Not for any clinical, therapeutic, or diagnostic use in humans or animals. Not for animal or human consumption.

Purchasers shall not, and agree not to enable third parties to, analyze, copy, reverse engineer or otherwise attempt to determine the structure or sequence of the product.



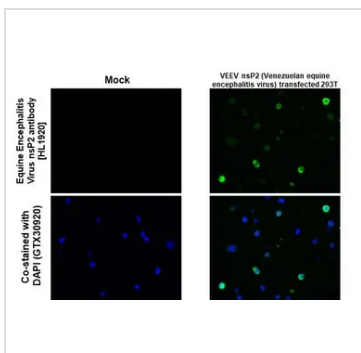
For full product information, images and publications, please visit our [website](#).

DATA IMAGES



GTX637669 WB Image

Non-transfected (-) and transfected (+) 293T whole cell extracts (30 µg) were separated by 7.5% SDS-PAGE, and the membrane was blotted with Equine Encephalitis Virus nsP2 antibody [HL1920] (GTX637669) diluted at 1:5000. The HRP-conjugated anti-rabbit IgG antibody (GTX213110-01) was used to detect the primary antibody, and the signal was developed with Trident ECL plus-Enhanced.



GTX637669 IHC-P (cell pellet) Image

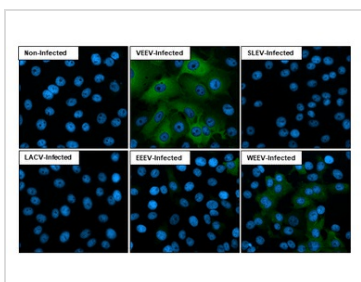
Equine Encephalitis Virus nsP2 antibody [HL1920] detects Equine Encephalitis Virus nsP2 protein by immunohistochemical analysis.

Sample: Paraffin-embedded mock and VEEV nsP2 (Venezuelan equine encephalitis virus) - transfected 293T cell pellet.

Green: Equine Encephalitis Virus nsP2 stained by Equine Encephalitis Virus nsP2 antibody [HL1920] (GTX637669) diluted at 1:5000.

Blue: Fluoroshield with DAPI (GTX30920).

Antigen Retrieval: Citrate buffer, pH 6.0, 15 min



GTX637669 ICC/IF Image

Immunofluorescent analysis of Venezuelan equine encephalitis virus infected cells using Venezuelan Equine Encephalitis Virus nsP2 antibody [HL1920] antibody (GTX637669).

Sample: Multiple virus infected cells slide.

Green: Venezuelan Equine Encephalitis Virus nsP2 antibody [HL1920] antibody (GTX637669) diluted at 1:100.

Blue: Fluoroshield with DAPI (GTX30920).



For full product information, images and publications, please visit our [website](#).