



SZABO SCANDIC

Part of Europa Biosite

Produktinformation



Forschungsprodukte & Biochemikalien



Zellkultur & Verbrauchsmaterial



Diagnostik & molekulare Diagnostik



Laborgeräte & Service

Weitere Information auf den folgenden Seiten!
See the following pages for more information!



Lieferung & Zahlungsart

siehe unsere [Liefer- und Versandbedingungen](#)

Zuschläge

- Mindermengenzuschlag
- Trockeneiszuschlag
- Gefahrgutzuschlag
- Expressversand

SZABO-SCANDIC HandelsgmbH

Quellenstraße 110, A-1100 Wien

T. +43(0)1 489 3961-0

F. +43(0)1 489 3961-7

mail@szabo-scandic.com

www.szabo-scandic.com

[linkedin.com/company/szaboscandic](https://www.linkedin.com/company/szaboscandic) 

Enterovirus 71 VP1 antibody [HL1929]

Cat. No. GTX637688

Host	Rabbit
Clonality	Monoclonal
Isotype	IgG
Application	WB, ICC/IF, ELISA, Sandwich ELISA
Reactivity	Enterovirus 71

Package
100 µl, 25 µl

APPLICATION

Application Note

*Optimal dilutions/concentrations should be determined by the researcher.

Suggested dilution	Recommended dilution
WB	Assay dependent
ICC/IF	Assay dependent
ELISA	Assay dependent
Sandwich ELISA	Assay dependent

Note : Capture : GTX637688, Detection : GTX637687)

Please notice that GTX637687 needs to be conjugated to HRP to function as the detection antibody when paired with GTX637688. Please contact us for custom HRP-conjugated antibody.

Not tested in other applications.

Product Note

This antibody was raised against Enterovirus 71 VP1, and it does not cross-react with Enterovirus D68 VP1 or Coxsackievirus A6.

PROPERTIES

Form	Liquid
Buffer	PBS
Preservative	No preservative
Storage	Store as concentrated solution. Centrifuge briefly prior to opening vial. For short-term storage (1-2 weeks), store at 4°C. For long-term storage, aliquot and store at -20°C or below. Avoid multiple freeze-thaw cycles.
Concentration	1 mg/ml (Please refer to the vial label for the specific concentration.)
Immunogen	Synthetic peptide of Enterovirus 71 VP1. (strain USA/BrCr/1970)
Purification	Affinity purified by Protein A.
Conjugation	Unconjugated



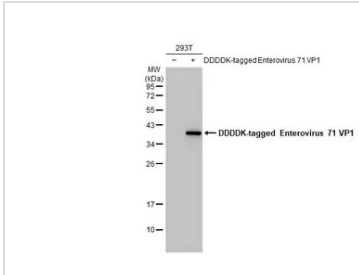
For full product information, images and publications, please visit our [website](#).

Date 2024 / 01 / 08 Page 1 of 2

For laboratory research use only. Not for any clinical, therapeutic, or diagnostic use in humans or animals. Not for animal or human consumption.

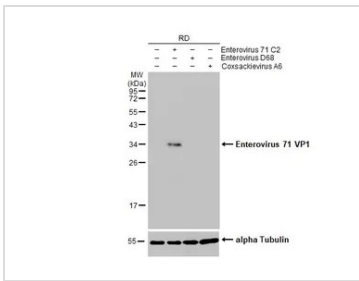
Note
Purchasers shall not, and agree not to enable third parties to, analyze, copy, reverse engineer or otherwise attempt to determine the structure or sequence of the product.

DATA IMAGES



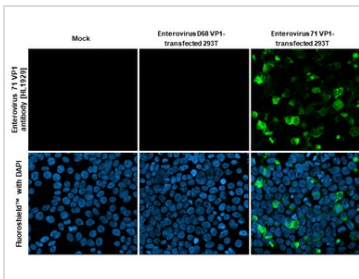
GTX637688 WB Image

Non-transfected (-) and transfected (+) 293T whole cell extracts (30 µg) were separated by 12% SDS-PAGE, and the membrane was blotted with Enterovirus 71 VP1 antibody [HL1929] (GTX637688) diluted at 1:5000. The HRP-conjugated anti-rabbit IgG antibody (GTX213110-01) was used to detect the primary antibody.



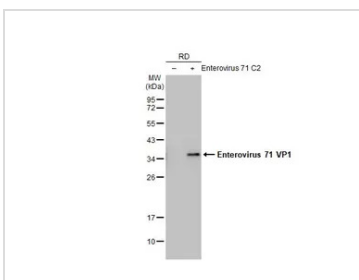
GTX637688 WB Image

Non-infected (-) and infected (+) RD whole cell extracts (20 µg) were separated by 12% SDS-PAGE, and the membrane was blotted with Enterovirus 71 VP1 antibody [HL1929] (GTX637688) diluted at 1:20000. The HRP-conjugated anti-rabbit IgG antibody (GTX213110-01) was used to detect the primary antibody.



GTX637688 ICC/IF Image

Enterovirus 71 VP1 antibody [HL1929] detects Enterovirus 71 VP1 protein by immunofluorescent analysis. Sample: Mock and transfected 293T cells were fixed in 4% paraformaldehyde at RT for 15 min. Green: Enterovirus 71 VP1 stained by Enterovirus 71 VP1 antibody [HL1929] (GTX637688) diluted at 1:500. Blue: Fluoroshield with DAPI (GTX30920).



GTX637688 WB Image

Non-infected (-) and infected (+) RD whole cell extracts (5 µg) were separated by 12% SDS-PAGE, and the membrane was blotted with Enterovirus 71 VP1 antibody [HL1929] (GTX637688) diluted at 1:1000. The HRP-conjugated anti-rabbit IgG antibody (GTX213110-01) was used to detect the primary antibody.



For full product information, images and publications, please visit our [website](#).