



# SZABO SCANDIC

Part of Europa Biosite

## Produktinformation



Forschungsprodukte & Biochemikalien



Zellkultur & Verbrauchsmaterial



Diagnostik & molekulare Diagnostik



Laborgeräte & Service

Weitere Information auf den folgenden Seiten!  
See the following pages for more information!



### Lieferung & Zahlungsart

siehe unsere [Liefer- und Versandbedingungen](#)

### Zuschläge

- Mindermengenzuschlag
- Trockeneiszuschlag
- Gefahrgutzuschlag
- Expressversand

### SZABO-SCANDIC HandelsgmbH

Quellenstraße 110, A-1100 Wien

T. +43(0)1 489 3961-0

F. +43(0)1 489 3961-7

[mail@szabo-scandic.com](mailto:mail@szabo-scandic.com)

[www.szabo-scandic.com](http://www.szabo-scandic.com)

[linkedin.com/company/szaboscandic](https://www.linkedin.com/company/szaboscandic) 

## Influenza A virus Nucleoprotein antibody [HL1952]

**Cat. No. GTX637789**

<b>Host</b>	Rabbit
<b>Clonality</b>	Monoclonal
<b>Isotype</b>	IgG
<b>Application</b>	Lateral Flow
<b>Reactivity</b>	Influenza A virus

**Package**  
100 µl, 25 µl

## APPLICATION

**Application Note**

\*Optimal dilutions/concentrations should be determined by the researcher.

Suggested dilution	Recommended dilution
Lateral Flow	Assay dependent

**Note : Capture : GTX637789, Detection : GTX636199**

**Please notice that the detection antibodies need to be conjugated to Gold to function when paired with capture antibodies. Please contact us for custom Gold-conjugated antibody.**

Not tested in other applications.

## PROPERTIES

<b>Form</b>	Liquid
<b>Buffer</b>	PBS
<b>Preservative</b>	No preservative
<b>Storage</b>	Store as concentrated solution. Centrifuge briefly prior to opening vial. For short-term storage (1-2 weeks), store at 4°C. For long-term storage, aliquot and store at -20°C or below. Avoid multiple freeze-thaw cycles.
<b>Concentration</b>	1 mg/ml (Please refer to the vial label for the specific concentration.)
<b>Immunogen</b>	Full length Influenza A virus Nucleoprotein. ( A/California/2009/H1N1)
<b>Purification</b>	Affinity purified by Protein A.
<b>Conjugation</b>	Unconjugated

**Note**

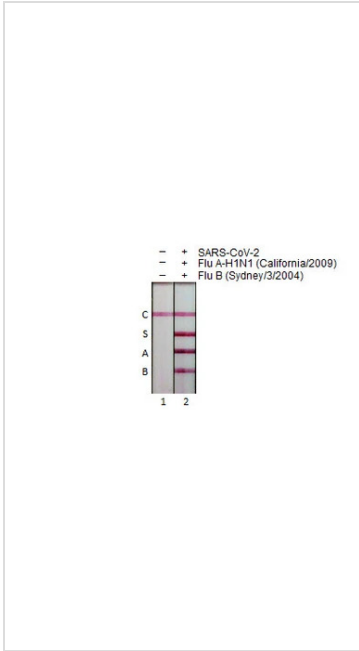
For laboratory research use only. Not for any clinical, therapeutic, or diagnostic use in humans or animals. Not for animal or human consumption.

Purchasers shall not, and agree not to enable third parties to, analyze, copy, reverse engineer or otherwise attempt to determine the structure or sequence of the product.



For full product information, images and publications, please visit our [website](#).

DATA IMAGES



**GTX637789 Lateral Flow Image**

Detection of nucleoproteins (NP) derived from SARS-CoV-2 (S), Influenza A virus (A), and Influenza B virus (B) by lateral flow assay using the monoclonal antibody pair. "C" stands for control.

**Pair for S :**

**Capture :** SARS-CoV-2 (COVID-19) Nucleocapsid antibody [HL455] (GTX635688)

**Detection :** SARS-CoV-2 (COVID-19) Nucleocapsid antibody [HL5511] (GTX635689)

**Pair for A:**

**Capture :** Influenza A virus Nucleoprotein antibody [HL1952] (GTX637789)

**Detection :** Influenza A virus Nucleoprotein antibody [HL1078] (GTX636199)

**Pair for B :**

**Capture :** Influenza B virus Nucleoprotein antibody [HL1073] (GTX636194)

**Detection :** Influenza B virus Nucleoprotein antibody [HL1068] (GTX636099)

**Samples (40 ng) :**

1. Lysis buffer
2. Mixture of SARS-CoV-2 (GTX135592-pro), Flu A-H1N1 (GTX135904-pro), and Flu B Nucleoprotein (GTX135867-pro)



For full product information, images and publications, please visit our [website](#).