



# SZABO SCANDIC

Part of Europa Biosite

## Produktinformation



Forschungsprodukte & Biochemikalien



Zellkultur & Verbrauchsmaterial



Diagnostik & molekulare Diagnostik



Laborgeräte & Service

Weitere Information auf den folgenden Seiten!  
See the following pages for more information!



### Lieferung & Zahlungsart

siehe unsere [Liefer- und Versandbedingungen](#)

### Zuschläge

- Mindermengenzuschlag
- Trockeneiszuschlag
- Gefahrgutzuschlag
- Expressversand

### SZABO-SCANDIC HandelsgmbH

Quellenstraße 110, A-1100 Wien

T. +43(0)1 489 3961-0

F. +43(0)1 489 3961-7

[mail@szabo-scandic.com](mailto:mail@szabo-scandic.com)

[www.szabo-scandic.com](http://www.szabo-scandic.com)

[linkedin.com/company/szaboscandic](https://www.linkedin.com/company/szaboscandic) 

## Apolipoprotein B antibody [HL1962]

Cat. No. GTX637799

Host	Rabbit
Clonality	Monoclonal
Isotype	IgG
Application	WB, ICC/IF, IHC-P, ELISA
Reactivity	Human

Package  
100 µl, 25 µl

## APPLICATION

## Application Note

\*Optimal dilutions/concentrations should be determined by the researcher.

Suggested dilution	Recommended dilution
WB	1:500-1:3000
ICC/IF	Assay dependent
IHC-P	Assay dependent
ELISA	Assay dependent

Not tested in other applications.

Calculated MW 516 kDa. ([Note](#))

## PROPERTIES

Form	Liquid
Buffer	PBS
Preservative	No preservative
Storage	Store as concentrated solution. Centrifuge briefly prior to opening vial. For short-term storage (1-2 weeks), store at 4°C. For long-term storage, aliquot and store at -20°C or below. Avoid multiple freeze-thaw cycles.
Concentration	1 mg/ml (Please refer to the vial label for the specific concentration.)
Immunogen	Recombinant fragment of human Apolipoprotein B
Purification	Affinity purified by Protein A.
Conjugation	Unconjugated

## Note

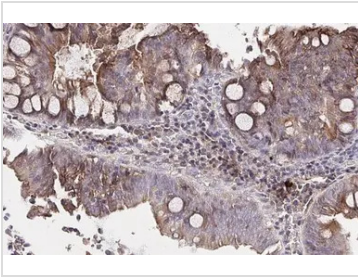
For laboratory research use only. Not for any clinical, therapeutic, or diagnostic use in humans or animals. Not for animal or human consumption.

Purchasers shall not, and agree not to enable third parties to, analyze, copy, reverse engineer or otherwise attempt to determine the structure or sequence of the product.



For full product information, images and publications, please visit our [website](#).

DATA IMAGES



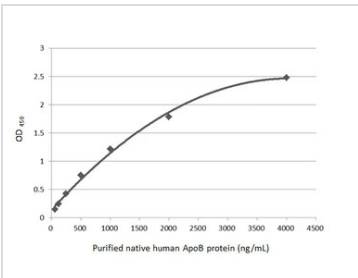
**GTX637799 IHC-P Image**

Apolipoprotein B antibody [HL1962] detects Apolipoprotein B protein at cell membrane and cytoplasm by immunohistochemical analysis.

Sample: Paraffin-embedded human colon.

Apolipoprotein B stained by Apolipoprotein B antibody [HL1962] (GTX637799) diluted at 1:100.

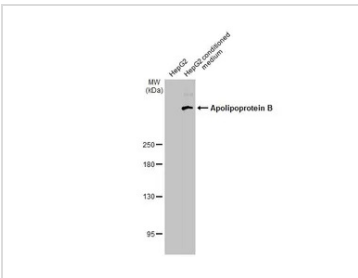
Antigen Retrieval: Citrate buffer, pH 6.0, 15 min



**GTX637799 ELISA Image**

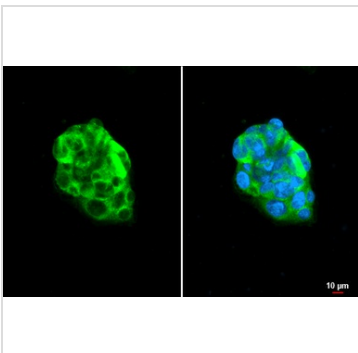
Indirect ELISA analysis was performed by coating the plate with purified native human ApoB protein (4000-62.5 ng/mL). Coated protein was probed with Apolipoprotein B antibody [HL1962] (GTX637799) (1 µg/mL).

Goat anti-rabbit IgG antibody (HRP) (GTX213110-01) (1:10000) was used to detect the bound primary antibody.



**GTX637799 WB Image**

HepG2 whole cell extract and conditioned medium (30 µg) were separated by 5% SDS-PAGE, and the membrane was blotted with Apolipoprotein B antibody [HL1962] (GTX637799) diluted at 1:1000. The HRP-conjugated anti-rabbit IgG antibody (GTX213110-01) was used to detect the primary antibody.



**GTX637799 ICC/IF Image**

Apolipoprotein B antibody [HL1962] detects Apolipoprotein B protein at cytoplasm by immunofluorescent analysis.

Sample: HepG2 cells were fixed in 4% paraformaldehyde at RT for 15 min.

Green: Apolipoprotein B stained by Apolipoprotein B antibody [HL1962] (GTX637799) diluted at 1:500.

Red: alpha Tubulin, a cytoskeleton marker, stained by alpha Tubulin antibody [GT114] (GTX628802) diluted at 1:1000.

Blue: Fluoroshield with DAPI (GTX30920).

Scale bar= 10µm.



For full product information, images and publications, please visit our [website](#).