



SZABO SCANDIC

Part of Europa Biosite

Produktinformation



Forschungsprodukte & Biochemikalien



Zellkultur & Verbrauchsmaterial



Diagnostik & molekulare Diagnostik



Laborgeräte & Service

Weitere Information auf den folgenden Seiten!
See the following pages for more information!



Lieferung & Zahlungsart

siehe unsere [Liefer- und Versandbedingungen](#)

Zuschläge

- Mindermengenzuschlag
- Trockeneiszuschlag
- Gefahrgutzuschlag
- Expressversand

SZABO-SCANDIC HandelsgmbH

Quellenstraße 110, A-1100 Wien

T. +43(0)1 489 3961-0

F. +43(0)1 489 3961-7

mail@szabo-scandic.com

www.szabo-scandic.com

[linkedin.com/company/szaboscandic](https://www.linkedin.com/company/szaboscandic) 

HHIP antibody [HL1969]

Cat. No. GTX637862

Host	Rabbit
Clonality	Monoclonal
Isotype	IgG
Application	WB, IHC-P
Reactivity	Human, Mouse

Package
100 µl, 25 µl

APPLICATION

Application Note

*Optimal dilutions/concentrations should be determined by the researcher.

Suggested dilution	Recommended dilution
WB	1:500-1:3000
IHC-P	Assay dependent

Not tested in other applications.

Calculated MW 79 kDa. ([Note](#))

PROPERTIES

Form	Liquid
Buffer	PBS
Preservative	No preservative
Storage	Store as concentrated solution. Centrifuge briefly prior to opening vial. For short-term storage (1-2 weeks), store at 4°C. For long-term storage, aliquot and store at -20°C or below. Avoid multiple freeze-thaw cycles.
Concentration	1 mg/ml (Please refer to the vial label for the specific concentration.)
Immunogen	Recombinant fragment of human HHIP
Purification	Affinity purified by Protein A.
Conjugation	Unconjugated

Note

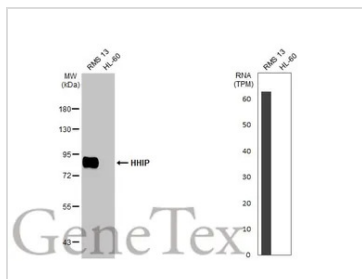
For laboratory research use only. Not for any clinical, therapeutic, or diagnostic use in humans or animals. Not for animal or human consumption.

Purchasers shall not, and agree not to enable third parties to, analyze, copy, reverse engineer or otherwise attempt to determine the structure or sequence of the product.

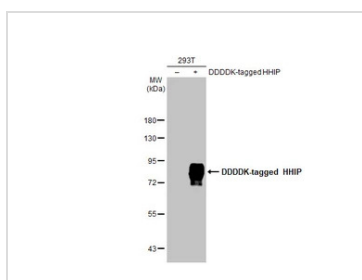


For full product information, images and publications, please visit our [website](#).

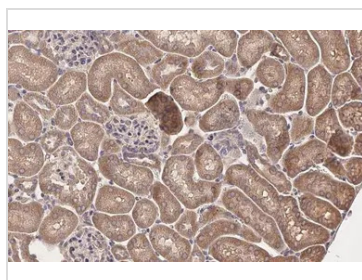
DATA IMAGES

**GTX637862 WB Image**

Various whole cell extracts (30 μ g) were separated by 7.5% SDS-PAGE, and the membrane was blotted with HHIP antibody [HL1969] (GTX637862) diluted at 1:1000. The HRP-conjugated anti-rabbit IgG antibody (GTX213110-01) was used to detect the primary antibody, and the signal was developed with Trident ECL plus-Enhanced. Corresponding RNA expression data for the same cell lines are based on Human Protein Atlas program.

**GTX637862 WB Image**

Non-transfected (-) and transfected (+) 293T whole cell extracts (30 μ g) were separated by 7.5% SDS-PAGE, and the membrane was blotted with HHIP antibody [HL1969] (GTX637862) diluted at 1:5000. The HRP-conjugated anti-rabbit IgG antibody (GTX213110-01) was used to detect the primary antibody.

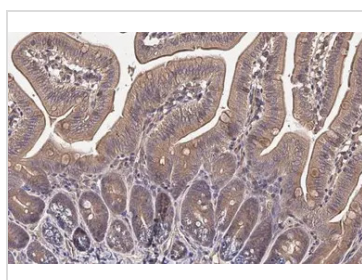
**GTX637862 IHC-P Image**

HHIP antibody [HL1969] detects HHIP protein at cell membrane and secreted by immunohistochemical analysis.

Sample: Paraffin-embedded mouse kidney.

HHIP stained by HHIP antibody [HL1969] (GTX637862) diluted at 1:100.

Antigen Retrieval: Citrate buffer, pH 6.0, 15 min

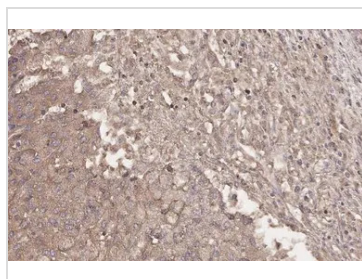
**GTX637862 IHC-P Image**

HHIP antibody [HL1969] detects HHIP protein at cell membrane and secreted by immunohistochemical analysis.

Sample: Paraffin-embedded mouse duodenum.

HHIP stained by HHIP antibody [HL1969] (GTX637862) diluted at 1:100.

Antigen Retrieval: Citrate buffer, pH 6.0, 15 min

**GTX637862 IHC-P Image**

HHIP antibody [HL1969] detects HHIP protein at cell membrane and secreted by immunohistochemical analysis.

Sample: Paraffin-embedded human hepatocellular carcinoma.

HHIP stained by HHIP antibody [HL1969] (GTX637862) diluted at 1:100.

Antigen Retrieval: Citrate buffer, pH 6.0, 15 min



For full product information, images and publications, please visit our [website](#).