



# SZABO SCANDIC

Part of Europa Biosite

## Produktinformation



Forschungsprodukte & Biochemikalien



Zellkultur & Verbrauchsmaterial



Diagnostik & molekulare Diagnostik



Laborgeräte & Service

Weitere Information auf den folgenden Seiten!  
See the following pages for more information!



### Lieferung & Zahlungsart

siehe unsere [Liefer- und Versandbedingungen](#)

### Zuschläge

- Mindermengenzuschlag
- Trockeneiszuschlag
- Gefahrgutzuschlag
- Expressversand

### SZABO-SCANDIC HandelsgmbH

Quellenstraße 110, A-1100 Wien

T. +43(0)1 489 3961-0

F. +43(0)1 489 3961-7

[mail@szabo-scandic.com](mailto:mail@szabo-scandic.com)

[www.szabo-scandic.com](http://www.szabo-scandic.com)

[linkedin.com/company/szaboscandic](https://www.linkedin.com/company/szaboscandic) 

## Desmoglein 2 antibody [HL2036]

Cat. No. GTX637937

|             |              |
|-------------|--------------|
| Host        | Rabbit       |
| Clonality   | Monoclonal   |
| Isotype     | IgG          |
| Application | WB, IHC-P    |
| Reactivity  | Human, Mouse |

Package  
100 µl, 25 µl

## APPLICATION

## Application Note

\*Optimal dilutions/concentrations should be determined by the researcher.

| Suggested dilution | Recommended dilution |
|--------------------|----------------------|
| WB                 | 1:500-1:3000         |
| IHC-P              | Assay dependent      |

Not tested in other applications.

Calculated MW 122 kDa. ([Note](#))

## PROPERTIES

|               |  |
|---------------|--|
| Form          | Liquid   |
| Buffer        | PBS  |
| Preservative  | No preservative  |
| Storage       | Store as concentrated solution. Centrifuge briefly prior to opening vial. For short-term storage (1-2 weeks), store at 4°C. For long-term storage, aliquot and store at -20°C or below. Avoid multiple freeze-thaw cycles. |
| Concentration | 1 mg/ml (Please refer to the vial label for the specific concentration.)   |
| Immunogen     | Recombinant protein encompassing a sequence within the C-terminus region of human Desmoglein 2. The exact sequence is proprietary.   |
| Purification  | Affinity purified by Protein A.  |
| Conjugation   | Unconjugated   |

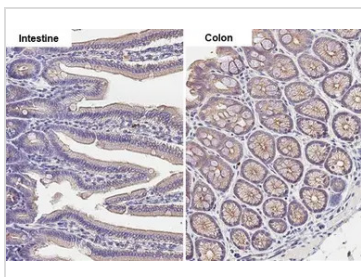
**Note** For laboratory research use only. Not for any clinical, therapeutic, or diagnostic use in humans or animals. Not for animal or human consumption.

Purchasers shall not, and agree not to enable third parties to, analyze, copy, reverse engineer or otherwise attempt to determine the structure or sequence of the product.



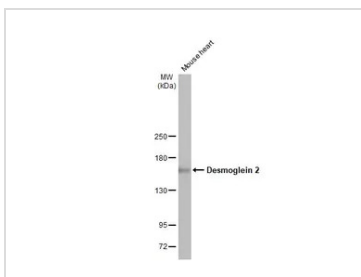
For full product information, images and publications, please visit our [website](#).

DATA IMAGES



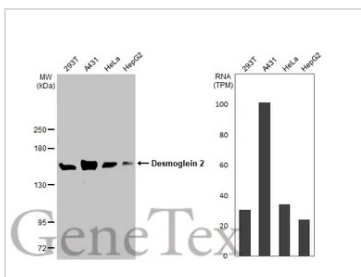
**GTX637937 IHC-P Image**

Desmoglein 2 antibody [HL2036] detects Desmoglein 2 protein by immunohistochemical analysis.  
 Sample: Paraffin-embedded mouse tissue.  
 Desmoglein 2 stained by Desmoglein 2 antibody [HL2036] (GTX637937) diluted at 1:100.  
 Antigen Retrieval: Citrate buffer, pH 6.0, 15 min



**GTX637937 WB Image**

Mouse tissue extract (50 µg) was separated by 5% SDS-PAGE, and the membrane was blotted with Desmoglein 2 antibody [HL2036] (GTX637937) diluted at 1:1000. The HRP-conjugated anti-rabbit IgG antibody (GTX213110-01) was used to detect the primary antibody.



**GTX637937 WB Image**

Various whole cell extracts (30 µg) were separated by 5% SDS-PAGE, and the membrane was blotted with Desmoglein 2 antibody [HL2036] (GTX637937) diluted at 1:5000. The HRP-conjugated anti-rabbit IgG antibody (GTX213110-01) was used to detect the primary antibody. Corresponding RNA expression data for the same cell lines are based on Human Protein Atlas program.



For full product information, images and publications, please visit our [website](#).