



SZABO SCANDIC

Part of Europa Biosite

Produktinformation



Forschungsprodukte & Biochemikalien



Zellkultur & Verbrauchsmaterial



Diagnostik & molekulare Diagnostik



Laborgeräte & Service

Weitere Information auf den folgenden Seiten!
See the following pages for more information!



Lieferung & Zahlungsart

siehe unsere [Liefer- und Versandbedingungen](#)

Zuschläge

- Mindermengenzuschlag
- Trockeneiszuschlag
- Gefahrgutzuschlag
- Expressversand

SZABO-SCANDIC HandelsgmbH

Quellenstraße 110, A-1100 Wien

T. +43(0)1 489 3961-0

F. +43(0)1 489 3961-7

mail@szabo-scandic.com

www.szabo-scandic.com

[linkedin.com/company/szaboscandic](https://www.linkedin.com/company/szaboscandic) 

SHP1 antibody [HL20845]

Cat. No. GTX637993

Host	Rabbit
Clonality	Monoclonal
Isotype	IgG
Application	WB, ICC/IF
Reactivity	Human

Package

100 µl, 25 µl

APPLICATION

Application Note

*Optimal dilutions/concentrations should be determined by the researcher.

Suggested dilution	Recommended dilution
WB	1:500-1:3000
ICC/IF	Assay dependent

Not tested in other applications.

Calculated MW 68 kDa. ([Note](#))

PROPERTIES

Form	Liquid
Buffer	PBS
Preservative	No preservative
Storage	Store as concentrated solution. Centrifuge briefly prior to opening vial. For short-term storage (1-2 weeks), store at 4°C. For long-term storage, aliquot and store at -20°C or below. Avoid multiple freeze-thaw cycles.
Concentration	1 mg/ml (Please refer to the vial label for the specific concentration.)
Immunogen	Recombinant fragment of human SHP1
Purification	Affinity purified by Protein A.
Conjugation	Unconjugated

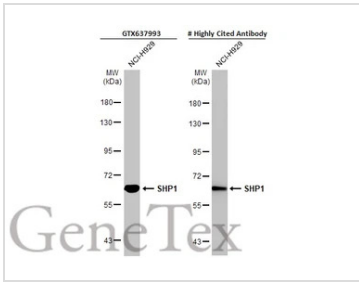
Note

For laboratory research use only. Not for any clinical, therapeutic, or diagnostic use in humans or animals. Not for animal or human consumption.

Purchasers shall not, and agree not to enable third parties to, analyze, copy, reverse engineer or otherwise attempt to determine the structure or sequence of the product.

For full product information, images and publications, please visit our [website](#).

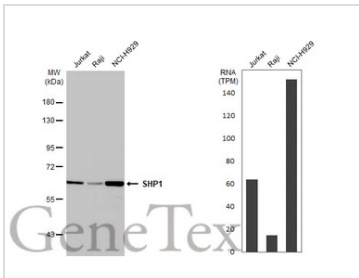
DATA IMAGES



GTX637993 WB Image

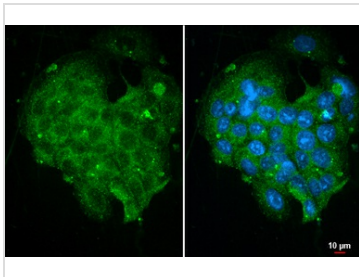
Whole cell extract (30 µg) was separated by 7.5% SDS-PAGE, and the membranes were blotted with SHP1 antibody [HL20845] (GTX637993) diluted at 1:1000 and competitor's antibody (#Highly competitor antibody) diluted at 1:1000. The HRP-conjugated anti-rabbit IgG antibody (GTX213110-01) was used to detect the primary antibody.

*The competitor is not affiliated with GeneTex and does not endorse this product.



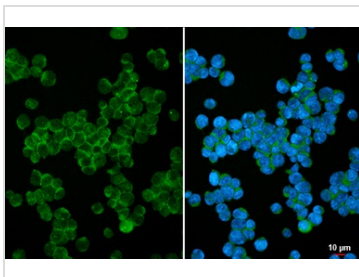
GTX637993 WB Image

Various whole cell extracts (30 µg) were separated by 7.5% SDS-PAGE, and the membrane was blotted with SHP1 antibody [HL20845] (GTX637993) diluted at 1:1000. The HRP-conjugated anti-rabbit IgG antibody (GTX213110-01) was used to detect the primary antibody. Corresponding RNA expression data for the same cell lines are based on Human Protein Atlas program.



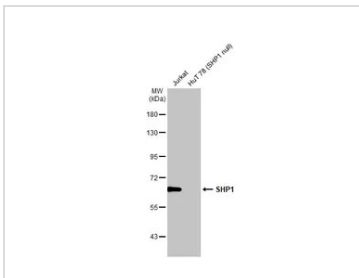
GTX637993 ICC/IF Image

SHP1 antibody [HL20845] detects SHP1 protein at cytoplasm by immunofluorescent analysis. Sample: MCF-7 cells were fixed in 4% paraformaldehyde at RT for 15 min. Green: SHP1 stained by SHP1 antibody [HL20845] (GTX637993) diluted at 1:500. Blue: Fluoroshield with DAPI (GTX30920).



GTX637993 ICC/IF Image

SHP1 antibody [HL20845] detects SHP1 protein at cytoplasm by immunofluorescent analysis. Sample: Jurkat cells were fixed in 4% paraformaldehyde at RT for 15 min. Green: SHP1 stained by SHP1 antibody [HL20845] (GTX637993) diluted at 1:500. Blue: Fluoroshield with DAPI (GTX30920).



GTX637993 WB Image

Various whole cell extracts (30 µg) were separated by 7.5% SDS-PAGE, and the membrane was blotted with SHP1 antibody [HL20845] (GTX637993) diluted at 1:1000. The HRP-conjugated anti-rabbit IgG antibody (GTX213110-01) was used to detect the primary antibody.



For full product information, images and publications, please visit our [website](#).