



SZABO SCANDIC

Part of Europa Biosite

Produktinformation



Forschungsprodukte & Biochemikalien



Zellkultur & Verbrauchsmaterial



Diagnostik & molekulare Diagnostik



Laborgeräte & Service

Weitere Information auf den folgenden Seiten!
See the following pages for more information!



Lieferung & Zahlungsart

siehe unsere [Liefer- und Versandbedingungen](#)

Zuschläge

- Mindermengenzuschlag
- Trockeneiszuschlag
- Gefahrgutzuschlag
- Expressversand

SZABO-SCANDIC HandelsgmbH

Quellenstraße 110, A-1100 Wien

T. +43(0)1 489 3961-0

F. +43(0)1 489 3961-7

mail@szabo-scandic.com

www.szabo-scandic.com

[linkedin.com/company/szaboscandic](https://www.linkedin.com/company/szaboscandic) 

Influenza A virus NS1 (nonstructural protein) antibody [HL2130]

Cat. No. GTX638102

| | |
|--------------------|-------------------|
| Host | Rabbit |
| Clonality | Monoclonal |
| Isotype | IgG |
| Application | WB, ICC/IF |
| Reactivity | Influenza A virus |

Package

100 µl, 25 µl

APPLICATION

Application Note

*Optimal dilutions/concentrations should be determined by the researcher.

| Suggested dilution | Recommended dilution |
|--------------------|----------------------|
| WB | 1:500-1:3000 |
| ICC/IF | Assay dependent |

Not tested in other applications.

PROPERTIES

| | |
|----------------------|--|
| Form | Liquid |
| Buffer | PBS |
| Preservative | No preservative |
| Storage | Store as concentrated solution. Centrifuge briefly prior to opening vial. For short-term storage (1-2 weeks), store at 4°C. For long-term storage, aliquot and store at -20°C or below. Avoid multiple freeze-thaw cycles. |
| Concentration | 1 mg/ml (Please refer to the vial label for the specific concentration.) |
| Immunogen | Recombinant fragment of Influenza A virus NS1 (nonstructural protein) |
| Purification | Affinity purified by Protein A. |
| Conjugation | Unconjugated |

Note

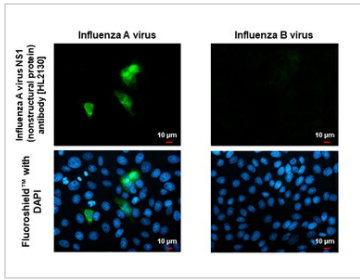
For laboratory research use only. Not for any clinical, therapeutic, or diagnostic use in humans or animals. Not for animal or human consumption.

Purchasers shall not, and agree not to enable third parties to, analyze, copy, reverse engineer or otherwise attempt to determine the structure or sequence of the product.



For full product information, images and publications, please visit our [website](#).

DATA IMAGES

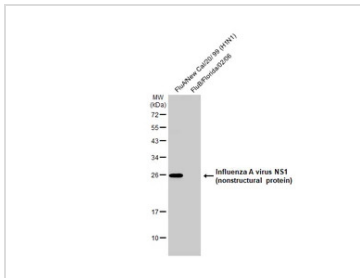


GTX638102 ICC/IF Image

Immunofluorescent analysis of Influenza virus infected cells using Influenza A virus NS1 (nonstructural protein) antibody [HL2130] (GTX638102).

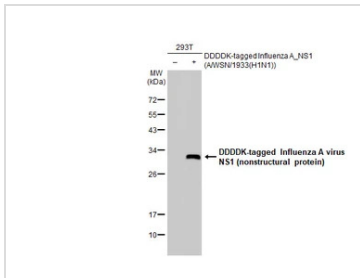
Sample: Influenza A and B virus infected cells slide.

Green: Influenza A virus NS1 (nonstructural protein) antibody [HL2130] (GTX638102) diluted at 1:100.
Blue: Fluoroshield with DAPI (GTX30920).



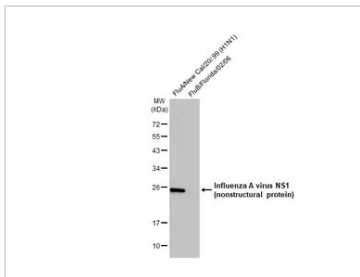
GTX638102 WB Image

Influenza A viral lysate and Influenza B viral lysate (0.1 µg) were separated by 12% SDS-PAGE, and the membrane was blotted with Influenza A virus NS1 (nonstructural protein) antibody [HL2130] (GTX638102) diluted at 1:1000. The HRP-conjugated anti-rabbit IgG antibody (GTX213110-01) was used to detect the primary antibody, and the signal was developed with Trident ECL plus-Enhanced.



GTX638102 WB Image

Non-transfected (-) and transfected (+) 293T whole cell extracts (30 µg) were separated by 12% SDS-PAGE, and the membrane was blotted with Influenza A virus NS1 (nonstructural protein) antibody [HL2130] (GTX638102) diluted at 1:1000. The HRP-conjugated anti-rabbit IgG antibody (GTX213110-01) was used to detect the primary antibody.



GTX638102 WB Image

Influenza A viral lysate and Influenza B viral lysate were separated by 12% SDS-PAGE, and the membrane was blotted with Influenza A virus NS1 (nonstructural protein) antibody [HL2130] (GTX638102) diluted at 1:1000. The HRP-conjugated anti-rabbit IgG antibody (GTX213110-01) was used to detect the primary antibody.



For full product information, images and publications, please visit our [website](#).