



# SZABO SCANDIC

Part of Europa Biosite

## Produktinformation



Forschungsprodukte & Biochemikalien



Zellkultur & Verbrauchsmaterial



Diagnostik & molekulare Diagnostik



Laborgeräte & Service

Weitere Information auf den folgenden Seiten!  
See the following pages for more information!



### Lieferung & Zahlungsart

siehe unsere [Liefer- und Versandbedingungen](#)

### Zuschläge

- Mindermengenzuschlag
- Trockeneiszuschlag
- Gefahrgutzuschlag
- Expressversand

### SZABO-SCANDIC HandelsgmbH

Quellenstraße 110, A-1100 Wien

T. +43(0)1 489 3961-0

F. +43(0)1 489 3961-7

[mail@szabo-scandic.com](mailto:mail@szabo-scandic.com)

[www.szabo-scandic.com](http://www.szabo-scandic.com)

[linkedin.com/company/szaboscandic](https://www.linkedin.com/company/szaboscandic) 

## Iba1 antibody [HL1880-RT]

**Cat. No. GTX638148**

|                    |                           |
|--------------------|---------------------------|
| <b>Host</b>        | Rat                       |
| <b>Clonality</b>   | Monoclonal                |
| <b>Isotype</b>     | IgG                       |
| <b>Application</b> | WB, ICC/IF, IHC-P, IHC-Fr |
| <b>Reactivity</b>  | Human, Mouse, Rat         |

**Package**  
100 µl, 25 µl

## APPLICATION

**Application Note**

\*Optimal dilutions/concentrations should be determined by the researcher.

| Suggested dilution | Recommended dilution |
|--------------------|----------------------|
| WB                 | 1:500-1:3000         |
| ICC/IF             | Assay dependent      |
| IHC-P              | 1:100-1:1000         |
| IHC-Fr             | Assay dependent      |

Not tested in other applications.

**Calculated MW** 17 kDa. ([Note](#))

## PROPERTIES

|                      |  |
|----------------------|--|
| <b>Form</b>          | Liquid   |
| <b>Buffer</b>        | PBS  |
| <b>Preservative</b>  | No preservative  |
| <b>Storage</b>       | Store as concentrated solution. Centrifuge briefly prior to opening vial. For short-term storage (1-2 weeks), store at 4°C. For long-term storage, aliquot and store at -20°C or below. Avoid multiple freeze-thaw cycles. |
| <b>Concentration</b> | 1 mg/ml (Please refer to the vial label for the specific concentration.)   |
| <b>Immunogen</b>     | Recombinant fragment of human Iba1   |
| <b>Purification</b>  | Affinity purified by Protein A.  |
| <b>Conjugation</b>   | Unconjugated   |

**Note**

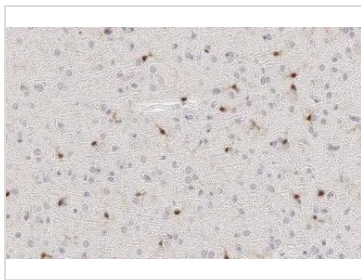
For laboratory research use only. Not for any clinical, therapeutic, or diagnostic use in humans or animals. Not for animal or human consumption.

Purchasers shall not, and agree not to enable third parties to, analyze, copy, reverse engineer or otherwise attempt to determine the structure or sequence of the product.



For full product information, images and publications, please visit our [website](#).

## DATA IMAGES

**GTX638148 IHC-P Image**

Iba1 antibody [HL1880-RT] detects Iba 1 protein by immunohistochemical analysis.

Sample: Paraffin-embedded mouse brain.

Green: Iba 1 stained by Iba1 antibody [HL1880-RT] (GTX638148) diluted at 1:100.

Antigen Retrieval: Citrate buffer, pH 6.0, 15 min

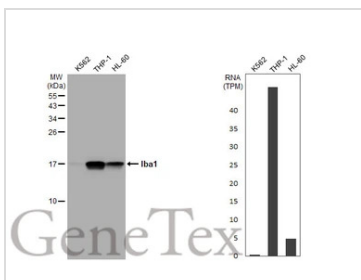
**GTX638148 IHC-P Image**

Iba1 antibody [HL1880-RT] detects Iba 1 protein by immunohistochemical analysis.

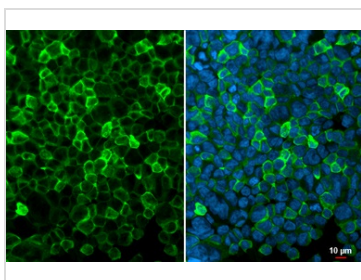
Sample: Paraffin-embedded rat brain.

Green: Iba 1 stained by Iba1 antibody [HL1880-RT] (GTX638148) diluted at 1:100.

Antigen Retrieval: Citrate buffer, pH 6.0, 15 min

**GTX638148 WB Image**

Various whole cell extracts (30 µg) were separated by 15% SDS-PAGE, and the membrane was blotted with Iba1 antibody [HL1880-RT] (GTX638148) diluted at 1:1000. The HRP-conjugated anti-rat IgG antibody (GTX224125-01) was used to detect the primary antibody. Corresponding RNA expression data for the same cell lines are based on Human Protein Atlas program.

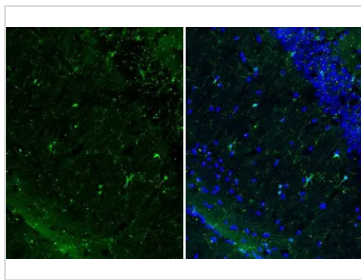
**GTX638148 ICC/IF Image**

Iba1 antibody [HL1880-RT] detects Iba1 protein at cell membrane by immunofluorescent analysis.

Sample: THP-1 cells were fixed in 4% paraformaldehyde at RT for 15 min.

Green: Iba1 stained by Iba1 antibody [HL1880-RT] (GTX638148) diluted at 1:500.

Blue: Fluoroshield with DAPI (GTX30920).

**GTX638148 IHC-Fr Image**

Iba1 antibody [HL1880-RT] detects Iba1 protein at cell membrane and cytoplasm by immunohistochemical analysis.

Sample: Frozen-sectioned mouse brain.

Green: Iba1 stained by Iba1 antibody [HL1880-RT] (GTX638148) diluted at 1:100.

Blue: Fluoroshield with DAPI (GTX30920).



For full product information, images and publications, please visit our [website](https://www.genetex.com).