



# SZABO SCANDIC

Part of Europa Biosite

## Produktinformation



Forschungsprodukte & Biochemikalien



Zellkultur & Verbrauchsmaterial



Diagnostik & molekulare Diagnostik



Laborgeräte & Service

Weitere Information auf den folgenden Seiten!  
See the following pages for more information!



### Lieferung & Zahlungsart

siehe unsere [Liefer- und Versandbedingungen](#)

### Zuschläge

- Mindermengenzuschlag
- Trockeneiszuschlag
- Gefahrgutzuschlag
- Expressversand

### SZABO-SCANDIC HandelsgmbH

Quellenstraße 110, A-1100 Wien

T. +43(0)1 489 3961-0

F. +43(0)1 489 3961-7

[mail@szabo-scandic.com](mailto:mail@szabo-scandic.com)

[www.szabo-scandic.com](http://www.szabo-scandic.com)

[linkedin.com/company/szaboscandic](https://www.linkedin.com/company/szaboscandic) 

## CXCR7 antibody [HL2189]

Cat. No. GTX638193

Host	Rabbit
Clonality	Monoclonal
Isotype	IgG
Application	WB, ICC/IF, IHC-P
Reactivity	Human, Mouse, Rat

Package  
100 µl, 25 µl

## APPLICATION

## Application Note

\*Optimal dilutions/concentrations should be determined by the researcher.

Suggested dilution	Recommended dilution
WB	1:500-1:3000
ICC/IF	Assay dependent
IHC-P	Assay dependent

Not tested in other applications.

Calculated MW 41 kDa. ([Note](#))

## PROPERTIES

Form	Liquid
Buffer	PBS
Preservative	No preservative
Storage	Store as concentrated solution. Centrifuge briefly prior to opening vial. For short-term storage (1-2 weeks), store at 4°C. For long-term storage, aliquot and store at -20°C or below. Avoid multiple freeze-thaw cycles.
Concentration	1 mg/ml (Please refer to the vial label for the specific concentration.)
Immunogen	Synthetic peptide of human CXCR7.
Purification	Affinity purified by Protein A.
Conjugation	Unconjugated

**Note**

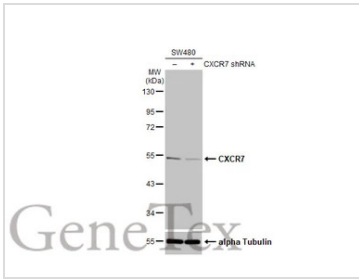
For laboratory research use only. Not for any clinical, therapeutic, or diagnostic use in humans or animals. Not for animal or human consumption.

Purchasers shall not, and agree not to enable third parties to, analyze, copy, reverse engineer or otherwise attempt to determine the structure or sequence of the product.



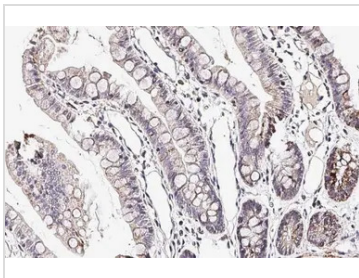
For full product information, images and publications, please visit our [website](#).

DATA IMAGES



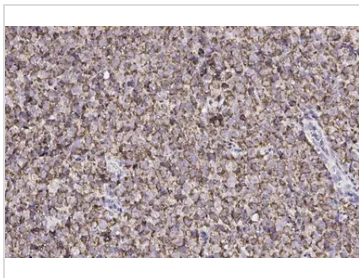
**GTX638193 WB Image**

Non-transfected (-) and transfected (+) SW480 whole cell extracts (30 µg) were separated by 10% SDS-PAGE, and the membrane was blotted with CXCR7 antibody [HL2189] (GTX638193) diluted at 1:10000. The HRP-conjugated anti-rabbit IgG antibody (GTX213110-01) was used to detect the primary antibody.



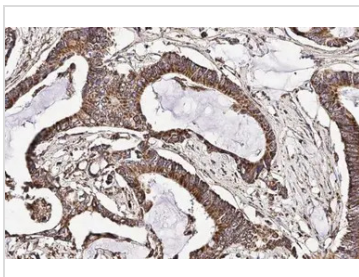
**GTX638193 IHC-P Image**

CXCR7 antibody [HL2189] detects CXCR7 protein at cell membrane by immunohistochemical analysis.  
Sample: Paraffin-embedded human colon cancer.  
CXCR7 stained by CXCR7 antibody [HL2189] (GTX638193) diluted at 1:100.  
Antigen Retrieval: Citrate buffer, pH 6.0, 15 min



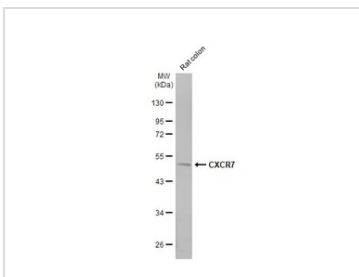
**GTX638193 IHC-P Image**

CXCR7 antibody [HL2189] detects CXCR7 protein at cell membrane by immunohistochemical analysis.  
Sample: Paraffin-embedded Raji xenograft.  
CXCR7 stained by CXCR7 antibody [HL2189] (GTX638193) diluted at 1:100.  
Antigen Retrieval: Citrate buffer, pH 6.0, 15 min



**GTX638193 IHC-P Image**

CXCR7 antibody [HL2189] detects CXCR7 protein at cell membrane by immunohistochemical analysis.  
Sample: Paraffin-embedded rat colon.  
CXCR7 stained by CXCR7 antibody [HL2189] (GTX638193) diluted at 1:100.  
Antigen Retrieval: Citrate buffer, pH 6.0, 15 min



**GTX638193 WB Image**

Rat tissue extract (50 µg) was separated by 10% SDS-PAGE, and the membrane was blotted with CXCR7 antibody [HL2189] (GTX638193) diluted at 1:1000. The HRP-conjugated anti-rabbit IgG antibody (GTX213110-01) was used to detect the primary antibody.



For full product information, images and publications, please visit our [website](#).