



SZABO SCANDIC

Part of Europa Biosite

Produktinformation



Forschungsprodukte & Biochemikalien



Zellkultur & Verbrauchsmaterial



Diagnostik & molekulare Diagnostik



Laborgeräte & Service

Weitere Information auf den folgenden Seiten!
See the following pages for more information!



Lieferung & Zahlungsart

siehe unsere [Liefer- und Versandbedingungen](#)

Zuschläge

- Mindermengenzuschlag
- Trockeneiszuschlag
- Gefahrgutzuschlag
- Expressversand

SZABO-SCANDIC HandelsgmbH

Quellenstraße 110, A-1100 Wien

T. +43(0)1 489 3961-0

F. +43(0)1 489 3961-7

mail@szabo-scandic.com

www.szabo-scandic.com

[linkedin.com/company/szaboscandic](https://www.linkedin.com/company/szaboscandic) 

Dengue virus NS3 protein antibody [HL2239]

Cat. No. GTX638284

Host	Rabbit
Clonality	Monoclonal
Isotype	IgG
Application	WB, ICC/IF
Reactivity	Dengue virus 1, Dengue virus 2, Dengue virus 3, Dengue virus 4

Package
100 µl, 25 µl

APPLICATION

Application Note

*Optimal dilutions/concentrations should be determined by the researcher.

Suggested dilution	Recommended dilution
WB	1:5000-1:200000
ICC/IF	Assay dependent

Not tested in other applications.

Product Note The validated Dengue virus serotype for each application may differ. Please refer to the validated data.

PROPERTIES

Form	Liquid
Buffer	PBS
Preservative	No preservative
Storage	Store as concentrated solution. Centrifuge briefly prior to opening vial. For short-term storage (1-2 weeks), store at 4°C. For long-term storage, aliquot and store at -20°C or below. Avoid multiple freeze-thaw cycles.
Concentration	1 mg/ml (Please refer to the vial label for the specific concentration.)
Immunogen	Recombinant fragment of Dengue virus NS3 protein. (strain Thailand/16681/1964)
Purification	Affinity purified by Protein A.
Conjugation	Unconjugated

Note

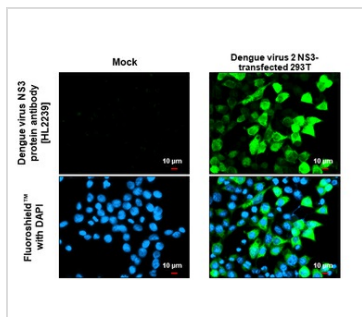
For laboratory research use only. Not for any clinical, therapeutic, or diagnostic use in humans or animals. Not for animal or human consumption.

Purchasers shall not, and agree not to enable third parties to, analyze, copy, reverse engineer or otherwise attempt to determine the structure or sequence of the product.



For full product information, images and publications, please visit our [website](#).

DATA IMAGES



GTX638284 ICC/IF Image

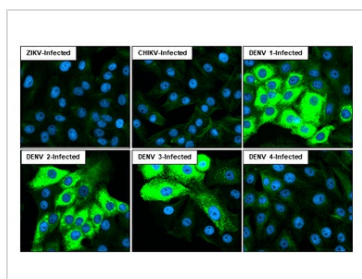
Dengue virus NS3 protein antibody [HL2239] detects Dengue virus NS3 protein protein by immunofluorescent analysis.

Sample: Mock and transfected 293T cells were fixed in ice-cold MeOH for 5 min.

Green: Dengue virus NS3 protein stained by Dengue virus NS3 protein antibody [HL2239] (GTX638284) diluted at 1:500.

Blue: Fluoroshield with DAPI (GTX30920).

Scale bar= 10μm.



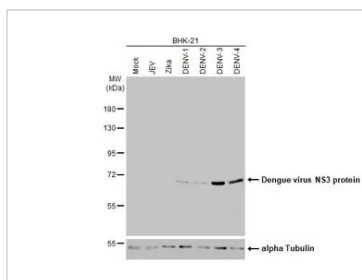
GTX638284 ICC/IF Image

Immunofluorescent analysis of Dengue virus infected cells using Dengue virus NS3 protein antibody [HL2239] antibody (GTX638284).

Sample: Multiple virus infected cells slide.

Green: Dengue virus NS3 protein antibody [HL2239] antibody (GTX638284) diluted at 1:100.

Blue: Fluoroshield with DAPI (GTX30920).



GTX638284 WB Image

Non-infected and infected BHK-21 whole cell extracts (5 μg) were separated by 7.5% SDS-PAGE, and the membrane was blotted with Dengue virus NS3 protein antibody [HL2239] (GTX638284) diluted at 1:200000. The HRP-conjugated anti-rabbit IgG antibody (GTX213110-01) was used to detect the primary antibody.



For full product information, images and publications, please visit our [website](#).