



SZABO SCANDIC

Part of Europa Biosite

Produktinformation



Forschungsprodukte & Biochemikalien



Zellkultur & Verbrauchsmaterial



Diagnostik & molekulare Diagnostik



Laborgeräte & Service

Weitere Information auf den folgenden Seiten!
See the following pages for more information!



Lieferung & Zahlungsart

siehe unsere [Liefer- und Versandbedingungen](#)

Zuschläge

- Mindermengenzuschlag
- Trockeneiszuschlag
- Gefahrgutzuschlag
- Expressversand

SZABO-SCANDIC HandelsgmbH

Quellenstraße 110, A-1100 Wien

T. +43(0)1 489 3961-0

F. +43(0)1 489 3961-7

mail@szabo-scandic.com

www.szabo-scandic.com

[linkedin.com/company/szaboscandic](https://www.linkedin.com/company/szaboscandic) 

IPMK antibody [HL2244]

Cat. No. GTX638293

Host	Rabbit
Clonality	Monoclonal
Isotype	IgG
Application	WB
Reactivity	Human, Mouse, Rat

Package
100 µl, 25 µl

APPLICATION

Application Note

*Optimal dilutions/concentrations should be determined by the researcher.

Suggested dilution **Recommended dilution**

WB 1:1000-1:10000

Not tested in other applications.

Calculated MW 47 kDa. ([Note](#))

PROPERTIES

Form Liquid**Buffer** PBS**Preservative** No preservative**Storage** Store as concentrated solution. Centrifuge briefly prior to opening vial. For short-term storage (1-2 weeks), store at 4°C. For long-term storage, aliquot and store at -20°C or below. Avoid multiple freeze-thaw cycles.**Concentration** 2 mg/ml (Please refer to the vial label for the specific concentration.)**Immunogen** Recombinant fragment of human IPMK.**Purification** Affinity purified by Protein A.**Conjugation** Unconjugated**Note**

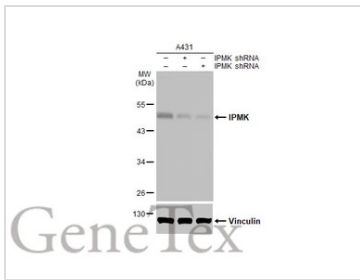
For laboratory research use only. Not for any clinical, therapeutic, or diagnostic use in humans or animals. Not for animal or human consumption.

Purchasers shall not, and agree not to enable third parties to, analyze, copy, reverse engineer or otherwise attempt to determine the structure or sequence of the product.



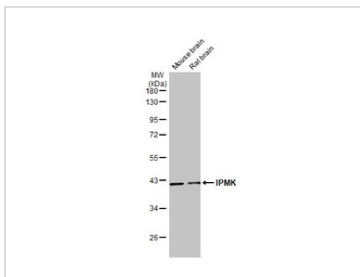
For full product information, images and publications, please visit our [website](#).

DATA IMAGES



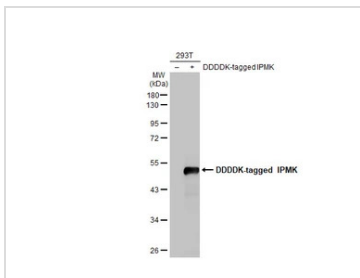
GTX638293 WB Image

Non-transfected (-) and transfected (+) A431 whole cell extracts (30 µg) were separated by 10% SDS-PAGE, and the membrane was blotted with IPMK antibody [HL2244] (GTX638293) diluted at 1:4000. The HRP-conjugated anti-rabbit IgG antibody (GTX213110-01) was used to detect the primary antibody.



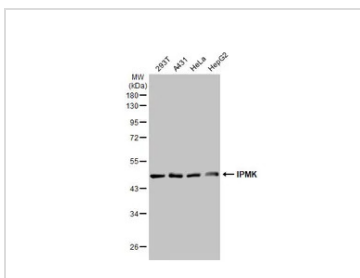
GTX638293 WB Image

Various tissue extracts (50 µg) were separated by 10% SDS-PAGE, and the membrane was blotted with IPMK antibody [HL2244] (GTX638293) diluted at 1:4000. The HRP-conjugated anti-rabbit IgG antibody (GTX213110-01) was used to detect the primary antibody.



GTX638293 WB Image

Non-transfected (-) and transfected (+) 293T whole cell extracts (30 µg) were separated by 10% SDS-PAGE, and the membrane was blotted with IPMK antibody [HL2244] (GTX638293) diluted at 1:500000. The HRP-conjugated anti-rabbit IgG antibody (GTX213110-01) was used to detect the primary antibody.



GTX638293 WB Image

Various whole cell extracts (30 µg) were separated by 10% SDS-PAGE, and the membrane was blotted with IPMK antibody [HL2244] (GTX638293) diluted at 1:5000. The HRP-conjugated anti-rabbit IgG antibody (GTX213110-01) was used to detect the primary antibody, and the signal was developed with Trident ECL plus-Enhanced.



For full product information, images and publications, please visit our [website](#).