



SZABO SCANDIC

Part of Europa Biosite

Produktinformation



Forschungsprodukte & Biochemikalien



Zellkultur & Verbrauchsmaterial



Diagnostik & molekulare Diagnostik



Laborgeräte & Service

Weitere Information auf den folgenden Seiten!
See the following pages for more information!



Lieferung & Zahlungsart

siehe unsere [Liefer- und Versandbedingungen](#)

Zuschläge

- Mindermengenzuschlag
- Trockeneiszuschlag
- Gefahrgutzuschlag
- Expressversand

SZABO-SCANDIC HandelsgmbH

Quellenstraße 110, A-1100 Wien

T. +43(0)1 489 3961-0

F. +43(0)1 489 3961-7

mail@szabo-scandic.com

www.szabo-scandic.com

[linkedin.com/company/szaboscandic](https://www.linkedin.com/company/szaboscandic) 

GADD153 antibody [HL2262]

Cat. No. GTX638314

Host	Rabbit
Clonality	Monoclonal
Isotype	IgG
Application	WB, ICC/IF, IHC-P
Reactivity	Human

Package
100 µl, 25 µl

APPLICATION

Application Note

*Optimal dilutions/concentrations should be determined by the researcher.

Suggested dilution	Recommended dilution
WB	1:1000-1:10000
ICC/IF	Assay dependent
IHC-P	Assay dependent

Not tested in other applications.

Calculated MW 19 kDa. ([Note](#))

PROPERTIES

Form	Liquid
Buffer	PBS
Preservative	No preservative
Storage	Store as concentrated solution. Centrifuge briefly prior to opening vial. For short-term storage (1-2 weeks), store at 4°C. For long-term storage, aliquot and store at -20°C or below. Avoid multiple freeze-thaw cycles.
Concentration	1 mg/ml (Please refer to the vial label for the specific concentration.)
Immunogen	Full length human GADD153 recombinant protein.
Purification	Affinity purified by Protein A.
Conjugation	Unconjugated

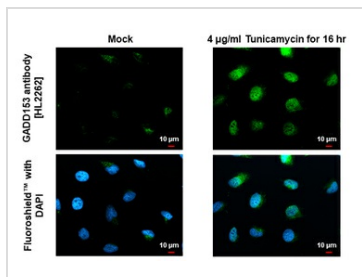
Note For laboratory research use only. Not for any clinical, therapeutic, or diagnostic use in humans or animals. Not for animal or human consumption.

Purchasers shall not, and agree not to enable third parties to, analyze, copy, reverse engineer or otherwise attempt to determine the structure or sequence of the product.



For full product information, images and publications, please visit our [website](#).

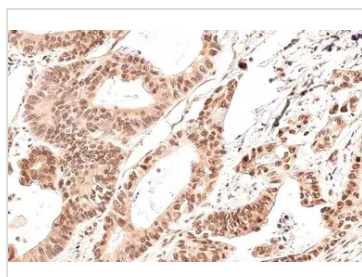
DATA IMAGES



GTX638314 ICC/IF Image

GADD153 antibody [HL2262] detects GADD153 protein at cytoplasm and nucleus by immunofluorescent analysis.

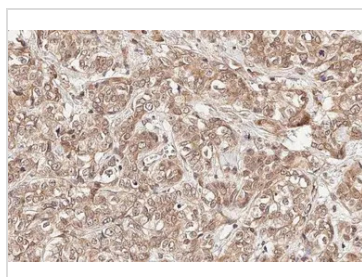
Sample: Mock and treated HeLa cells were fixed in 4% paraformaldehyde at RT for 15 min.
Green: GADD153 stained by GADD153 antibody [HL2262] (GTX638314) diluted at 1:500.
Blue: Fluoroshield with DAPI (GTX30920).



GTX638314 IHC-P Image

GADD153 antibody [HL2262] detects GADD153 protein at cytoplasm and nucleus by immunohistochemical analysis.

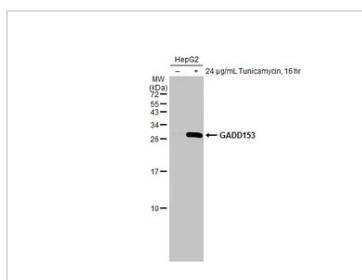
Sample: Paraffin-embedded human colon cancer.
GADD153 stained by GADD153 antibody [HL2262] (GTX638314) diluted at 1:200.
Antigen Retrieval: Citrate buffer, pH 6.0, 15 min



GTX638314 IHC-P Image

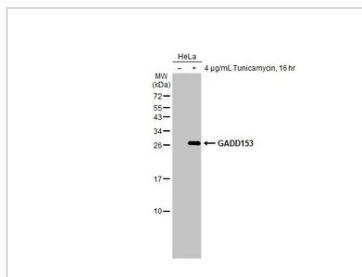
GADD153 antibody [HL2262] detects GADD153 protein at cytoplasm and nucleus by immunohistochemical analysis.

Sample: Paraffin-embedded human breast carcinoma.
GADD153 stained by GADD153 antibody [HL2262] (GTX638314) diluted at 1:200.
Antigen Retrieval: Citrate buffer, pH 6.0, 15 min



GTX638314 WB Image

Untreated (-) and treated (+) HepG2 whole cell extract (30 µg) were separated by 15% SDS-PAGE, and the membrane was blotted with GADD153 antibody [HL2262] (GTX638314) diluted at 1:1000. The HRP-conjugated anti-rabbit IgG antibody (GTX213110-01) was used to detect the primary antibody.



GTX638314 WB Image

Untreated (-) and treated (+) HeLa whole cell extracts (30 µg) were separated by 15% SDS-PAGE, and the membrane was blotted with GADD153 antibody [HL2262] (GTX638314) diluted at 1:4000. The HRP-conjugated anti-rabbit IgG antibody (GTX213110-01) was used to detect the primary antibody.



For full product information, images and publications, please visit our [website](#).