



SZABO SCANDIC

Part of Europa Biosite

Produktinformation



Forschungsprodukte & Biochemikalien



Zellkultur & Verbrauchsmaterial



Diagnostik & molekulare Diagnostik



Laborgeräte & Service

Weitere Information auf den folgenden Seiten!
See the following pages for more information!



Lieferung & Zahlungsart

siehe unsere [Liefer- und Versandbedingungen](#)

Zuschläge

- Mindermengenzuschlag
- Trockeneiszuschlag
- Gefahrgutzuschlag
- Expressversand

SZABO-SCANDIC HandelsgmbH

Quellenstraße 110, A-1100 Wien

T. +43(0)1 489 3961-0

F. +43(0)1 489 3961-7

mail@szabo-scandic.com

www.szabo-scandic.com

[linkedin.com/company/szaboscandic](https://www.linkedin.com/company/szaboscandic) 

ST6GAL1 antibody [HL2318]

Cat. No. GTX638481

Host	Rabbit
Clonality	Monoclonal
Isotype	IgG
Application	WB, IHC-P
Reactivity	Human, Mouse, Rat

Package
100 µl, 25 µl

APPLICATION

Application Note

*Optimal dilutions/concentrations should be determined by the researcher.

Suggested dilution	Recommended dilution
WB	1:500-1:3000
IHC-P	Assay dependent

Not tested in other applications.

Calculated MW 47 kDa. ([Note](#))

PROPERTIES

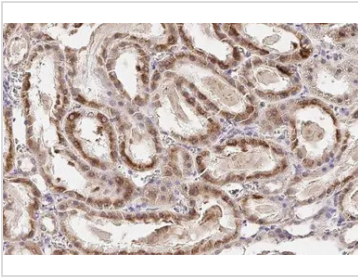
Form	Liquid
Buffer	PBS
Preservative	No preservative
Storage	Store as concentrated solution. Centrifuge briefly prior to opening vial. For short-term storage (1-2 weeks), store at 4°C. For long-term storage, aliquot and store at -20°C or below. Avoid multiple freeze-thaw cycles.
Concentration	1 mg/ml (Please refer to the vial label for the specific concentration.)
Immunogen	Recombinant fragment of human ST6GAL1.
Purification	Affinity purified by Protein A.
Conjugation	Unconjugated

Note
For laboratory research use only. Not for any clinical, therapeutic, or diagnostic use in humans or animals. Not for animal or human consumption.
Purchasers shall not, and agree not to enable third parties to, analyze, copy, reverse engineer or otherwise attempt to determine the structure or sequence of the product.



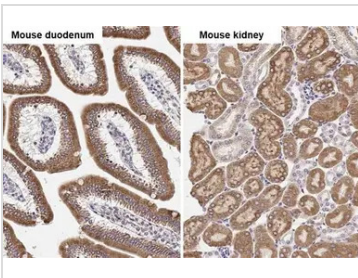
For full product information, images and publications, please visit our [website](#).

DATA IMAGES



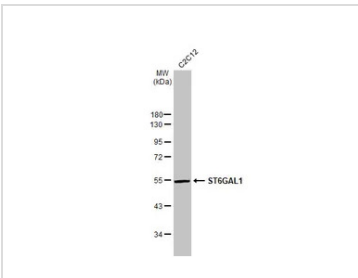
GTX638481 IHC-P Image

ST6GAL1 antibody [HL2318] detects secreted ST6GAL1 protein by immunohistochemical analysis.
 Sample: Paraffin-embedded rat kidney.
 ST6GAL1 stained by ST6GAL1 antibody [HL2318] (GTX638481) diluted at 1:100.
 Antigen Retrieval: Citrate buffer, pH 6.0, 15 min



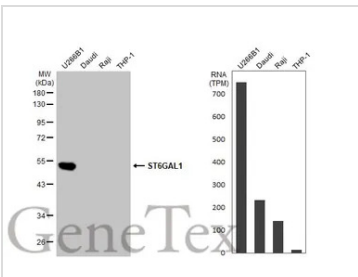
GTX638481 IHC-P Image

ST6GAL1 antibody [HL2318] detects ST6GAL1 protein by immunohistochemical analysis.
 Sample: Paraffin-embedded mouse tissues.
 ST6GAL1 stained by ST6GAL1 antibody [HL2318] (GTX638481) diluted at 1:100.
 Antigen Retrieval: Citrate buffer, pH 6.0, 15 min



GTX638481 WB Image

Whole cell extract (30 µg) was separated by 10% SDS-PAGE, and the membrane was blotted with ST6GAL1 antibody [HL2318] (GTX638481) diluted at 1:1000. The HRP-conjugated anti-rabbit IgG antibody (GTX213110-01) was used to detect the primary antibody.



GTX638481 WB Image

Various whole cell extracts (30 µg) were separated by 10% SDS-PAGE, and the membrane was blotted with ST6GAL1 antibody [HL2318] (GTX638481) diluted at 1:1000. The HRP-conjugated anti-rabbit IgG antibody (GTX213110-01) was used to detect the primary antibody. Corresponding RNA expression data for the same cell lines are based on Human Protein Atlas program.



For full product information, images and publications, please visit our [website](#).