



SZABO SCANDIC

Part of Europa Biosite

Produktinformation



Forschungsprodukte & Biochemikalien



Zellkultur & Verbrauchsmaterial



Diagnostik & molekulare Diagnostik



Laborgeräte & Service

Weitere Information auf den folgenden Seiten!
See the following pages for more information!



Lieferung & Zahlungsart

siehe unsere [Liefer- und Versandbedingungen](#)

Zuschläge

- Mindermengenzuschlag
- Trockeneiszuschlag
- Gefahrgutzuschlag
- Expressversand

SZABO-SCANDIC HandelsgmbH

Quellenstraße 110, A-1100 Wien

T. +43(0)1 489 3961-0

F. +43(0)1 489 3961-7

mail@szabo-scandic.com

www.szabo-scandic.com

[linkedin.com/company/szaboscandic](https://www.linkedin.com/company/szaboscandic) 

RanBP1 antibody [HL2358]

Cat. No. GTX638564

Host	Rabbit
Clonality	Monoclonal
Isotype	IgG
Application	WB, ICC/IF, IHC-P
Reactivity	Human, Mouse, Rat

Package
100 µl, 25 µl

APPLICATION

Application Note

*Optimal dilutions/concentrations should be determined by the researcher.

Suggested dilution	Recommended dilution
WB	1:500-1:3000
ICC/IF	1:100-1:1000
IHC-P	Assay dependent

Not tested in other applications.

Calculated MW 23 kDa. ([Note](#))

PROPERTIES

Form	Liquid
Buffer	PBS
Preservative	No preservative
Storage	Store as concentrated solution. Centrifuge briefly prior to opening vial. For short-term storage (1-2 weeks), store at 4°C. For long-term storage, aliquot and store at -20°C or below. Avoid multiple freeze-thaw cycles.
Concentration	1 mg/ml (Please refer to the vial label for the specific concentration.)
Immunogen	Recombinant fragment of human RanBP1.
Purification	Affinity purified by Protein A.
Conjugation	Unconjugated

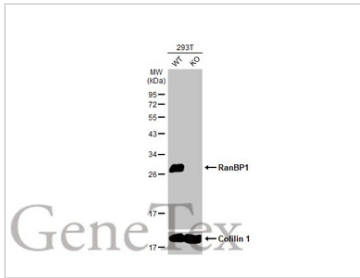
Note For laboratory research use only. Not for any clinical, therapeutic, or diagnostic use in humans or animals. Not for animal or human consumption.

Purchasers shall not, and agree not to enable third parties to, analyze, copy, reverse engineer or otherwise attempt to determine the structure or sequence of the product.

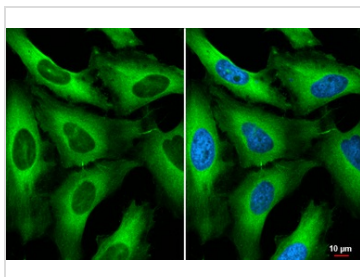


For full product information, images and publications, please visit our [website](#).

DATA IMAGES

**GTX638564 WB Image**

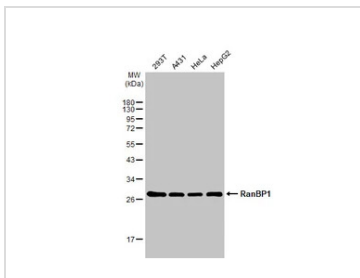
Wild-type (WT) and RanBP1 knockout (KO) 293T cell extracts (30 μ g) were separated by 12% SDS-PAGE, and the membrane was blotted with RanBP1 antibody [HL2358] (GTX638564) diluted at 1:1000. The HRP-conjugated anti-rabbit IgG antibody (GTX213110-01) was used to detect the primary antibody.

**GTX638564 ICC/IF Image**

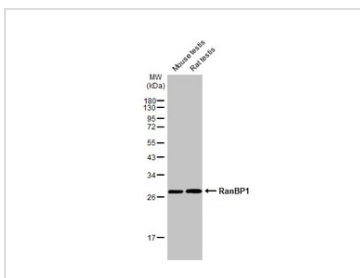
RanBP1 antibody [HL2358] detects RanBP1 protein at cytoplasm by immunofluorescent analysis. Sample: HeLa cells were fixed in 4% paraformaldehyde at RT for 15 min.

Green: RanBP1 stained by RanBP1 antibody [HL2358] (GTX638564) diluted at 1:500.

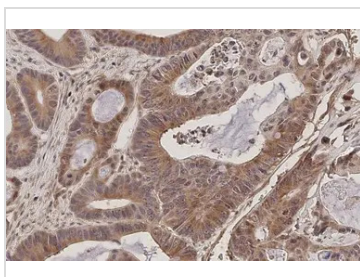
Blue: Fluoroshield with DAPI (GTX30920).

**GTX638564 WB Image**

Various whole cell extracts (30 μ g) were separated by 12% SDS-PAGE, and the membrane was blotted with RanBP1 antibody [HL2358] (GTX638564) diluted at 1:1000. The HRP-conjugated anti-rabbit IgG antibody (GTX213110-01) was used to detect the primary antibody.

**GTX638564 WB Image**

Various tissue extracts (50 μ g) were separated by 12% SDS-PAGE, and the membrane was blotted with RanBP1 antibody [HL2358] (GTX638564) diluted at 1:1000. The HRP-conjugated anti-rabbit IgG antibody (GTX213110-01) was used to detect the primary antibody.

**GTX638564 IHC-P Image**

RanBP1 antibody [HL2358] detects RanBP1 protein at cytoplasm by immunohistochemical analysis.

Sample: Paraffin-embedded human colon cancer.

RanBP1 stained by RanBP1 antibody [HL2358] (GTX638564) diluted at 1:200.

Antigen Retrieval: Citrate buffer, pH 6.0, 15 min



For full product information, images and publications, please visit our [website](https://www.genetex.com).