



# SZABO SCANDIC

Part of Europa Biosite

## Produktinformation



Forschungsprodukte & Biochemikalien



Zellkultur & Verbrauchsmaterial



Diagnostik & molekulare Diagnostik



Laborgeräte & Service

Weitere Information auf den folgenden Seiten!  
See the following pages for more information!



### Lieferung & Zahlungsart

siehe unsere [Liefer- und Versandbedingungen](#)

### Zuschläge

- Mindermengenzuschlag
- Trockeneiszuschlag
- Gefahrgutzuschlag
- Expressversand

### SZABO-SCANDIC HandelsgmbH

Quellenstraße 110, A-1100 Wien

T. +43(0)1 489 3961-0

F. +43(0)1 489 3961-7

[mail@szabo-scandic.com](mailto:mail@szabo-scandic.com)

[www.szabo-scandic.com](http://www.szabo-scandic.com)

[linkedin.com/company/szaboscandic](https://www.linkedin.com/company/szaboscandic) 

## TNF alpha antibody [HL2361]

Cat. No. GTX638567

Host	Rabbit
Clonality	Monoclonal
Isotype	IgG
Application	IHC-P, ELISA, Sandwich ELISA
Reactivity	Human

Package  
100 µl, 25 µl

## APPLICATION

## Application Note

\*Optimal dilutions/concentrations should be determined by the researcher.

Suggested dilution	Recommended dilution
IHC-P	Assay dependent
ELISA	Assay dependent
Sandwich ELISA	Assay dependent

**Note : Capture: GTX638569, Detection: GTX638567**

Not tested in other applications.

**Calculated MW** 26 kDa. ([Note](#))

## PROPERTIES

Form	Liquid
Buffer	PBS
Preservative	No preservative
Storage	Store as concentrated solution. Centrifuge briefly prior to opening vial. For short-term storage (1-2 weeks), store at 4°C. For long-term storage, aliquot and store at -20°C or below. Avoid multiple freeze-thaw cycles.
Concentration	1 mg/ml (Please refer to the vial label for the specific concentration.)
Immunogen	Full length human TNF alpha recombinant protein.
Purification	Affinity purified by Protein A.
Conjugation	Unconjugated

## Note

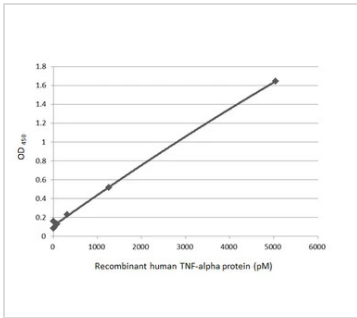
For laboratory research use only. Not for any clinical, therapeutic, or diagnostic use in humans or animals. Not for animal or human consumption.

Purchasers shall not, and agree not to enable third parties to, analyze, copy, reverse engineer or otherwise attempt to determine the structure or sequence of the product.



For full product information, images and publications, please visit our [website](#).

## DATA IMAGES

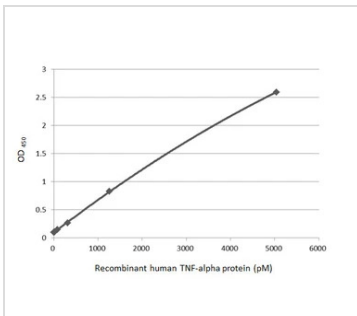
**GTX638567 ELISA Image**

Sandwich ELISA detection of recombinant 293T expressed, human Fc-tagged TNF alpha (54-233 a.a.) using antibodies as below.

**Capture:** TNF alpha antibody [HL2363] (GTX638569) (5 µg/mL)

**Detection:** HRP-conjugated TNF alpha antibody [HL2361] (GTX638567) (1 µg/mL)

Please notice that GTX638567 needs to be conjugated to HRP to function as the detection antibody when paired with GTX638569. Please contact us for custom HRP-conjugated antibody.

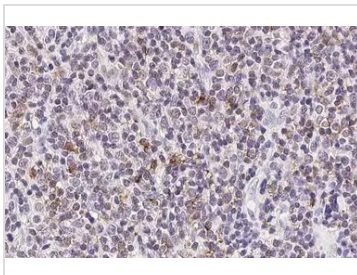
**GTX638567 ELISA Image**

Sandwich ELISA detection of recombinant 293T expressed, human Fc-tagged TNF alpha (54-233 a.a.) using antibodies as below.

**Capture:** TNF alpha antibody [HL2361] (GTX638567) (5 µg/mL)

**Detection:** HRP-conjugated TNF alpha antibody [HL2363] (GTX638569) (1 µg/mL)

Please notice that GTX638569 needs to be conjugated to HRP to function as the detection antibody when paired with GTX638567. Please contact us for custom HRP-conjugated antibody.

**GTX638567 IHC-P Image**

TNF alpha antibody [HL2361] detects TNF alpha protein at cytoplasm by immunohistochemical analysis.

Sample: Paraffin-embedded human tonsil.

TNF alpha stained by TNF alpha antibody [HL2361] (GTX638567) diluted at 1:100.

Antigen Retrieval: Citrate buffer, pH 6.0, 15 min



For full product information, images and publications, please visit our [website](#).