



# SZABO SCANDIC

Part of Europa Biosite

## Produktinformation



Forschungsprodukte & Biochemikalien



Zellkultur & Verbrauchsmaterial



Diagnostik & molekulare Diagnostik



Laborgeräte & Service

Weitere Information auf den folgenden Seiten!  
See the following pages for more information!



### Lieferung & Zahlungsart

siehe unsere [Liefer- und Versandbedingungen](#)

### Zuschläge

- Mindermengenzuschlag
- Trockeneiszuschlag
- Gefahrgutzuschlag
- Expressversand

### SZABO-SCANDIC HandelsgmbH

Quellenstraße 110, A-1100 Wien

T. +43(0)1 489 3961-0

F. +43(0)1 489 3961-7

[mail@szabo-scandic.com](mailto:mail@szabo-scandic.com)

[www.szabo-scandic.com](http://www.szabo-scandic.com)

[linkedin.com/company/szaboscandic](https://www.linkedin.com/company/szaboscandic) 

## Galectin 3 antibody [HL2397]

**Cat. No. GTX638614**

<b>Host</b>	Rabbit
<b>Clonality</b>	Monoclonal
<b>Isotype</b>	IgG
<b>Application</b>	WB, ELISA, Sandwich ELISA
<b>Reactivity</b>	Human, Mouse, Dog

**Package**  
100 µl, 25 µl

## APPLICATION

**Application Note**

\*Optimal dilutions/concentrations should be determined by the researcher.

Suggested dilution	Recommended dilution
WB	Assay dependent
ELISA	Assay dependent
Sandwich ELISA	Assay dependent

**Note : Capture : GTX638614, Detection : GTX638613 or Capture : GTX638613, Detection : GTX638614**

Not tested in other applications.

**Calculated MW** 26 kDa. ([Note](#))

## PROPERTIES

<b>Form</b>	Liquid
<b>Buffer</b>	PBS
<b>Preservative</b>	No preservative
<b>Storage</b>	Store as concentrated solution. Centrifuge briefly prior to opening vial. For short-term storage (1-2 weeks), store at 4°C. For long-term storage, aliquot and store at -20°C or below. Avoid multiple freeze-thaw cycles.
<b>Concentration</b>	1 mg/ml (Please refer to the vial label for the specific concentration.)
<b>Immunogen</b>	Recombinant fragment of human Galectin 3
<b>Purification</b>	Affinity purified by Protein A.
<b>Conjugation</b>	Unconjugated

**Note**

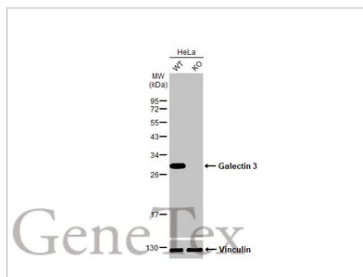
For laboratory research use only. Not for any clinical, therapeutic, or diagnostic use in humans or animals. Not for animal or human consumption.

Purchasers shall not, and agree not to enable third parties to, analyze, copy, reverse engineer or otherwise attempt to determine the structure or sequence of the product.



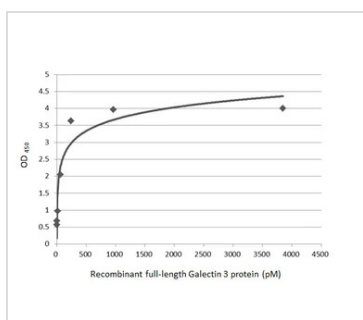
For full product information, images and publications, please visit our [website](#).

DATA IMAGES



**GTX638614 WB Image**

Wild-type (WT) and Galectin 3 knockout (KO) HeLa cell extracts (30 µg) were separated by 12% SDS-PAGE, and the membrane was blotted with Galectin 3 antibody [HL2397] (GTX638614) diluted at 1:1000. The HRP-conjugated anti-rabbit IgG antibody (GTX213110-01) was used to detect the primary antibody.



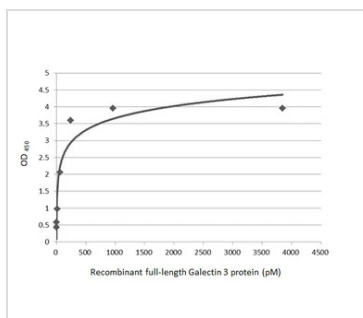
**GTX638614 ELISA Image**

Sandwich ELISA detection of recombinant E.coli expressed, full-length Galectin 3 protein using antibodies as below.

**Capture:** Galectin 3 antibody [HL2396] (GTX638613) (5 µg/mL)

**Detection:** HRP-conjugated Galectin 3 antibody [HL2397] (GTX638614) (1 µg/mL)

Please notice that GTX638614 needs to be conjugated to HRP to function as the detection antibody when paired with GTX638613. Please contact us for custom HRP-conjugated antibody.



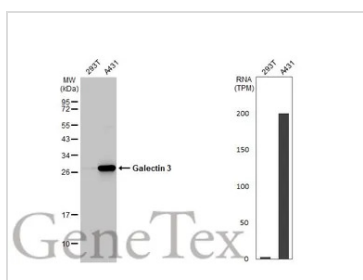
**GTX638614 ELISA Image**

Sandwich ELISA detection of recombinant E.coli expressed, full-length Galectin 3 protein using antibodies as below.

**Capture:** Galectin 3 antibody [HL2397] (GTX638614) (5 µg/mL)

**Detection:** HRP-conjugated Galectin 3 antibody [HL2396] (GTX638613) (1 µg/mL)

Please notice that GTX638613 needs to be conjugated to HRP to function as the detection antibody when paired with GTX638614. Please contact us for custom HRP-conjugated antibody.



**GTX638614 WB Image**

Various whole cell extracts (30 µg) were separated by 12% SDS-PAGE, and the membrane was blotted with Galectin 3 antibody [HL2397] (GTX638614) diluted at 1:1000. The HRP-conjugated anti-rabbit IgG antibody (GTX213110-01) was used to detect the primary antibody. Corresponding RNA expression data for the same cell lines are based on Human Protein Atlas program.



For full product information, images and publications, please visit our [website](https://www.genetex.com).