



# SZABO SCANDIC

Part of Europa Biosite

## Produktinformation



Forschungsprodukte & Biochemikalien



Zellkultur & Verbrauchsmaterial



Diagnostik & molekulare Diagnostik



Laborgeräte & Service

Weitere Information auf den folgenden Seiten!  
See the following pages for more information!



### Lieferung & Zahlungsart

siehe unsere [Liefer- und Versandbedingungen](#)

### Zuschläge

- Mindermengenzuschlag
- Trockeneiszuschlag
- Gefahrgutzuschlag
- Expressversand

### SZABO-SCANDIC HandelsgmbH

Quellenstraße 110, A-1100 Wien

T. +43(0)1 489 3961-0

F. +43(0)1 489 3961-7

[mail@szabo-scandic.com](mailto:mail@szabo-scandic.com)

[www.szabo-scandic.com](http://www.szabo-scandic.com)

[linkedin.com/company/szaboscandic](https://www.linkedin.com/company/szaboscandic) 

## Collagen I + Collagen II + Collagen III antibody [HL2048 + HL1907]

**Cat. No. GTX638633**

<b>Host</b>	Rabbit
<b>Clonality</b>	Monoclonal
<b>Isotype</b>	IgG
<b>Application</b>	WB, IHC-P
<b>Reactivity</b>	Human, Mouse, Rat

**Package**

100 µl, 25 µl

## APPLICATION

**Application Note**

\*Optimal dilutions/concentrations should be determined by the researcher.

Suggested dilution	Recommended dilution
WB	1:500-1:3000
IHC-P	Assay dependent

Not tested in other applications.

## PROPERTIES

<b>Form</b>	Liquid
<b>Buffer</b>	PBS
<b>Preservative</b>	No preservative
<b>Storage</b>	Store as concentrated solution. Centrifuge briefly prior to opening vial. For short-term storage (1-2 weeks), store at 4°C. For long-term storage, aliquot and store at -20°C or below. Avoid multiple freeze-thaw cycles.
<b>Concentration</b>	1 mg/ml (Please refer to the vial label for the specific concentration.)
<b>Immunogen</b>	Recombinant fragment of human Collagen I + Collagen II + Collagen III.
<b>Purification</b>	Affinity purified by Protein A.
<b>Conjugation</b>	Unconjugated

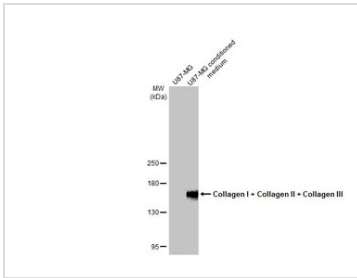
**Note**

For laboratory research use only. Not for any clinical, therapeutic, or diagnostic use in humans or animals. Not for animal or human consumption.

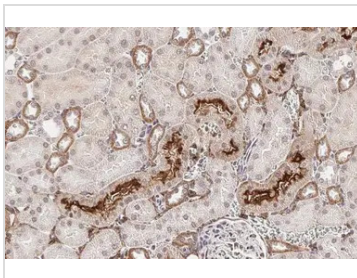
Purchasers shall not, and agree not to enable third parties to, analyze, copy, reverse engineer or otherwise attempt to determine the structure or sequence of the product.

For full product information, images and publications, please visit our [website](#).

## DATA IMAGES

**GTx638633 WB Image**

U87-MG whole cell extract and conditioned medium (30 µg) were separated by 5% SDS-PAGE, and the membrane was blotted with Collagen I + Collagen II + Collagen III antibody [HL2048 + HL1907] (GTx638633) diluted at 1:2000. The HRP-conjugated anti-rabbit IgG antibody (GTx213110-01) was used to detect the primary antibody.

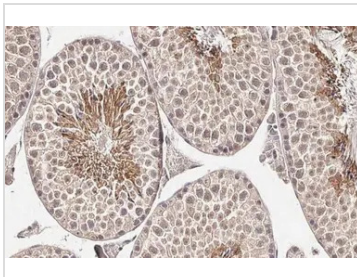
**GTx638633 IHC-P Image**

Collagen I + Collagen II + Collagen III antibody [HL2048 + HL1907] detects secreted Collagen I + Collagen II + Collagen III protein by immunohistochemical analysis.

Sample: Paraffin-embedded rat kidney.

Collagen I + Collagen II + Collagen III stained by Collagen I + Collagen II + Collagen III antibody [HL2048 + HL1907] (GTx638633) diluted at 1:100.

Antigen Retrieval: Citrate buffer, pH 6.0, 15 min

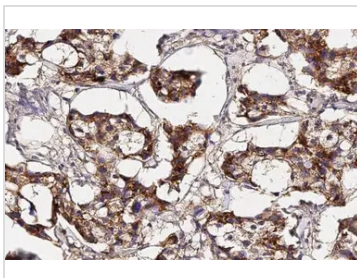
**GTx638633 IHC-P Image**

Collagen I + Collagen II + Collagen III antibody [HL2048 + HL1907] detects secreted Collagen I + Collagen II + Collagen III protein by immunohistochemical analysis.

Sample: Paraffin-embedded mouse testis.

Collagen I + Collagen II + Collagen III stained by Collagen I + Collagen II + Collagen III antibody [HL2048 + HL1907] (GTx638633) diluted at 1:100.

Antigen Retrieval: Citrate buffer, pH 6.0, 15 min

**GTx638633 IHC-P Image**

Collagen I + Collagen II + Collagen III antibody [HL2048 + HL1907] detects secreted Collagen I + Collagen II + Collagen III protein by immunohistochemical analysis.

Sample: Paraffin-embedded human breast carcinoma.

Collagen I + Collagen II + Collagen III stained by Collagen I + Collagen II + Collagen III antibody [HL2048 + HL1907] (GTx638633) diluted at 1:100.

Antigen Retrieval: Citrate buffer, pH 6.0, 15 min



For full product information, images and publications, please visit our [website](#).