



SZABO SCANDIC

Part of Europa Biosite

Produktinformation



Forschungsprodukte & Biochemikalien



Zellkultur & Verbrauchsmaterial



Diagnostik & molekulare Diagnostik



Laborgeräte & Service

Weitere Information auf den folgenden Seiten!
See the following pages for more information!



Lieferung & Zahlungsart

siehe unsere [Liefer- und Versandbedingungen](#)

Zuschläge

- Mindermengenzuschlag
- Trockeneiszuschlag
- Gefahrgutzuschlag
- Expressversand

SZABO-SCANDIC HandelsgmbH

Quellenstraße 110, A-1100 Wien

T. +43(0)1 489 3961-0

F. +43(0)1 489 3961-7

mail@szabo-scandic.com

www.szabo-scandic.com

[linkedin.com/company/szaboscandic](https://www.linkedin.com/company/szaboscandic) 

CXCR4 antibody [HL2425]

Cat. No. GTX638647

Host	Rabbit
Clonality	Monoclonal
Isotype	IgG
Application	ICC/IF, IHC-P
Reactivity	Human, Mouse, Rat

Package
100 µl, 25 µl

APPLICATION

Application Note

*Optimal dilutions/concentrations should be determined by the researcher.

Suggested dilution	Recommended dilution
ICC/IF	Assay dependent
IHC-P	1:100-1:1000

Not tested in other applications.

Calculated MW 40 kDa. ([Note](#))

PROPERTIES

Form	Liquid
Buffer	PBS
Preservative	No preservative
Storage	Store as concentrated solution. Centrifuge briefly prior to opening vial. For short-term storage (1-2 weeks), store at 4°C. For long-term storage, aliquot and store at -20°C or below. Avoid multiple freeze-thaw cycles.
Concentration	1 mg/ml (Please refer to the vial label for the specific concentration.)
Immunogen	Synthetic peptide of human CXCR4.
Purification	Affinity purified by Protein A.
Conjugation	Unconjugated

Note

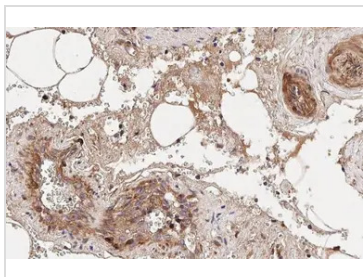
For laboratory research use only. Not for any clinical, therapeutic, or diagnostic use in humans or animals. Not for animal or human consumption.

Purchasers shall not, and agree not to enable third parties to, analyze, copy, reverse engineer or otherwise attempt to determine the structure or sequence of the product.



For full product information, images and publications, please visit our [website](#).

DATA IMAGES

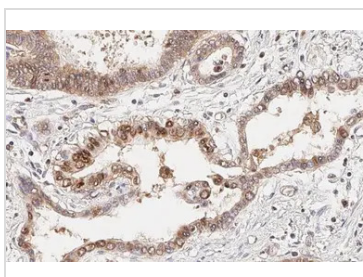
**GTX638647 IHC-P Image**

CXCR4 antibody [HL2425] detects CXCR4 protein at cell membrane and cytoplasm by immunohistochemical analysis.

Sample: Paraffin-embedded human breast carcinoma.

CXCR4 stained by CXCR4 antibody [HL2425] (GTX638647) diluted at 1:300.

Antigen Retrieval: Citrate buffer, pH 6.0, 15 min

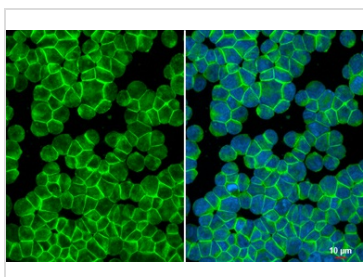
**GTX638647 IHC-P Image**

CXCR4 antibody [HL2425] detects CXCR4 protein at cell membrane and cytoplasm by immunohistochemical analysis.

Sample: Paraffin-embedded human pancreatic cancer.

CXCR4 stained by CXCR4 antibody [HL2425] (GTX638647) diluted at 1:300.

Antigen Retrieval: Citrate buffer, pH 6.0, 15 min

**GTX638647 ICC/IF Image**

CXCR4 antibody [HL2425] detects CXCR4 protein at cell membrane by immunofluorescent analysis.

Sample: Jurkat cells were fixed in 4% paraformaldehyde at RT for 15 min.

Green: CXCR4 stained by CXCR4 antibody [HL2425] (GTX638647) diluted at 1:500.

Blue: Fluoroshield with DAPI (GTX30920).

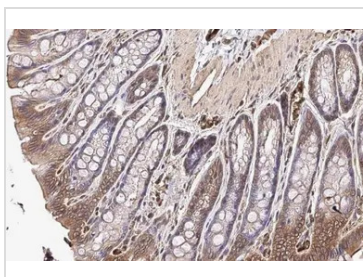
**GTX638647 IHC-P Image**

CXCR4 antibody [HL2425] detects CXCR4 protein at cell membrane and cytoplasm by immunohistochemical analysis.

Sample: Paraffin-embedded mouse intestine.

CXCR4 stained by CXCR4 antibody [HL2425] (GTX638647) diluted at 1:100.

Antigen Retrieval: Citrate buffer, pH 6.0, 15 min

**GTX638647 IHC-P Image**

CXCR4 antibody [HL2425] detects CXCR4 protein at cell membrane and cytoplasm by immunohistochemical analysis.

Sample: Paraffin-embedded rat colon.

CXCR4 stained by CXCR4 antibody [HL2425] (GTX638647) diluted at 1:100.

Antigen Retrieval: Citrate buffer, pH 6.0, 15 min



For full product information, images and publications, please visit our [website](#).