



# SZABO SCANDIC

Part of Europa Biosite

## Produktinformation



Forschungsprodukte & Biochemikalien



Zellkultur & Verbrauchsmaterial



Diagnostik & molekulare Diagnostik



Laborgeräte & Service

Weitere Information auf den folgenden Seiten!  
See the following pages for more information!



### Lieferung & Zahlungsart

siehe unsere [Liefer- und Versandbedingungen](#)

### Zuschläge

- Mindermengenzuschlag
- Trockeneiszuschlag
- Gefahrgutzuschlag
- Expressversand

### SZABO-SCANDIC HandelsgmbH

Quellenstraße 110, A-1100 Wien

T. +43(0)1 489 3961-0

F. +43(0)1 489 3961-7

[mail@szabo-scandic.com](mailto:mail@szabo-scandic.com)

[www.szabo-scandic.com](http://www.szabo-scandic.com)

[linkedin.com/company/szaboscandic](https://www.linkedin.com/company/szaboscandic) 

## Hemoglobin epsilon antibody [HL2457]

Cat. No. GTX638775

Host	Rabbit
Clonality	Monoclonal
Isotype	IgG
Application	WB, ICC/IF, IHC-P
Reactivity	Human, Mouse, Rat

Package  
100 µl, 25 µl

## APPLICATION

## Application Note

\*Optimal dilutions/concentrations should be determined by the researcher.

Suggested dilution	Recommended dilution
WB	1:500-1:3000
ICC/IF	Assay dependent
IHC-P	Assay dependent

Not tested in other applications.

Calculated MW 16 kDa. ([Note](#))

## PROPERTIES

Form	Liquid
Buffer	PBS
Preservative	No preservative
Storage	Store as concentrated solution. Centrifuge briefly prior to opening vial. For short-term storage (1-2 weeks), store at 4°C. For long-term storage, aliquot and store at -20°C or below. Avoid multiple freeze-thaw cycles.
Concentration	1 mg/ml (Please refer to the vial label for the specific concentration.)
Immunogen	Synthetic peptide of human Hemoglobin epsilon.
Purification	Affinity purified by Protein A.
Conjugation	Unconjugated

## Note

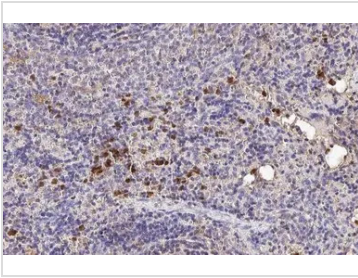
For laboratory research use only. Not for any clinical, therapeutic, or diagnostic use in humans or animals. Not for animal or human consumption.

Purchasers shall not, and agree not to enable third parties to, analyze, copy, reverse engineer or otherwise attempt to determine the structure or sequence of the product.



For full product information, images and publications, please visit our [website](#).

DATA IMAGES



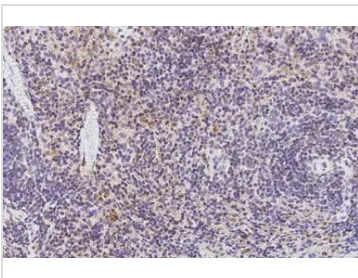
**GTX638775 IHC-P Image**

Hemoglobin epsilon antibody [HL2457] detects secreted Hemoglobin epsilon protein by immunohistochemical analysis.

Sample: Paraffin-embedded rat spleen.

Hemoglobin epsilon stained by Hemoglobin epsilon antibody [HL2457] (GTX638775) diluted at 1:100.

Antigen Retrieval: Citrate buffer, pH 6.0, 15 min



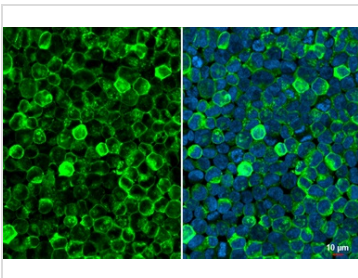
**GTX638775 IHC-P Image**

Hemoglobin epsilon antibody [HL2457] detects secreted Hemoglobin epsilon protein by immunohistochemical analysis.

Sample: Paraffin-embedded mouse spleen.

Hemoglobin epsilon stained by Hemoglobin epsilon antibody [HL2457] (GTX638775) diluted at 1:100.

Antigen Retrieval: Citrate buffer, pH 6.0, 15 min



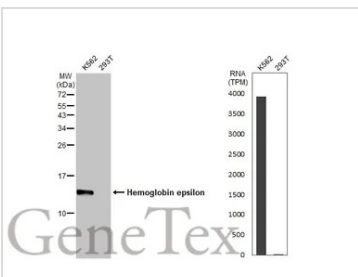
**GTX638775 ICC/IF Image**

Hemoglobin epsilon antibody [HL2457] detects Hemoglobin epsilon protein at cell membrane and cytoplasm by immunofluorescent analysis.

Sample: K562 cells were fixed in 4% paraformaldehyde at RT for 15 min.

Green: Hemoglobin epsilon stained by Hemoglobin epsilon antibody [HL2457] (GTX638775) diluted at 1:500.

Blue: Fluoroshield with DAPI (GTX30920).



**GTX638775 WB Image**

Various whole cell extracts (30 µg) were separated by 15% SDS-PAGE, and the membrane was blotted with Hemoglobin epsilon antibody [HL2457] (GTX638775) diluted at 1:1000. The HRP-conjugated anti-rabbit IgG antibody (GTX213110-01) was used to detect the primary antibody. Corresponding RNA expression data for the same cell lines are based on Human Protein Atlas program.



For full product information, images and publications, please visit our [website](#).